

CERTIFICATE OF ANOKA COUNTY BENCHMARK LOCATION

County of Anoka

State of Minnesota

Located in the SW 1/4 of
 Section 35 Township 31 Range 23

Horizontal Location

Vertical Location

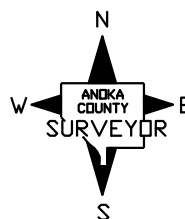
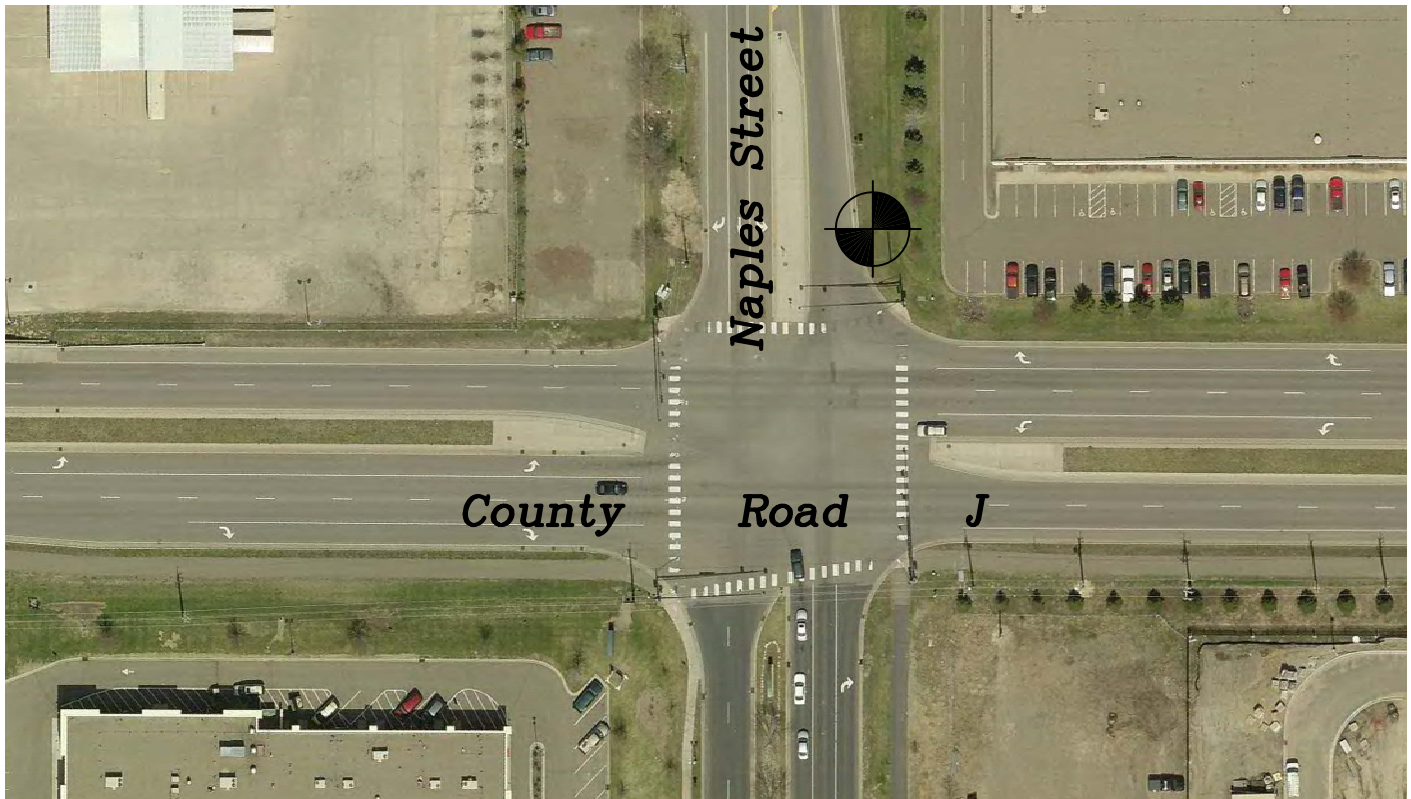
N.A.D. 1983 Coordinates County Project Coordinates
Northing <u>132602</u> Easting <u>521336</u> (1996 Adjustment)

National Geodetic Vertical Datum
Elevation <u>910.533</u> (1929 Adjustment)

North American Vertical Datum
Elevation <u>910.756</u> (1988 Adjustment)

Description:

Top Nut Hydrant located in the northeast quadrant of Naples Street and County Road J.



Previous Benchmark ID	<u>BLUE 99</u>
Reference Bench Loop	<u>BL-LINO 1</u>
Bench Loop Point No.	<u>116</u>
Anoka County Surveyor (ACS) No.	<u>NA</u>

Last Revised
01/31/13

Date Set	<u>07/29/1994</u>
Warning Sign Set	<u>No</u>
Last Visited	<u>12/6/12</u>
Condition	<u>Good</u>