

# CERTIFICATE OF ANOKA COUNTY BENCHMARK LOCATION

County of Anoka

State of Minnesota

Located in the SE 1/4 of  
 Section 31 Township 31 Range 22

## Horizontal Location

## Vertical Location

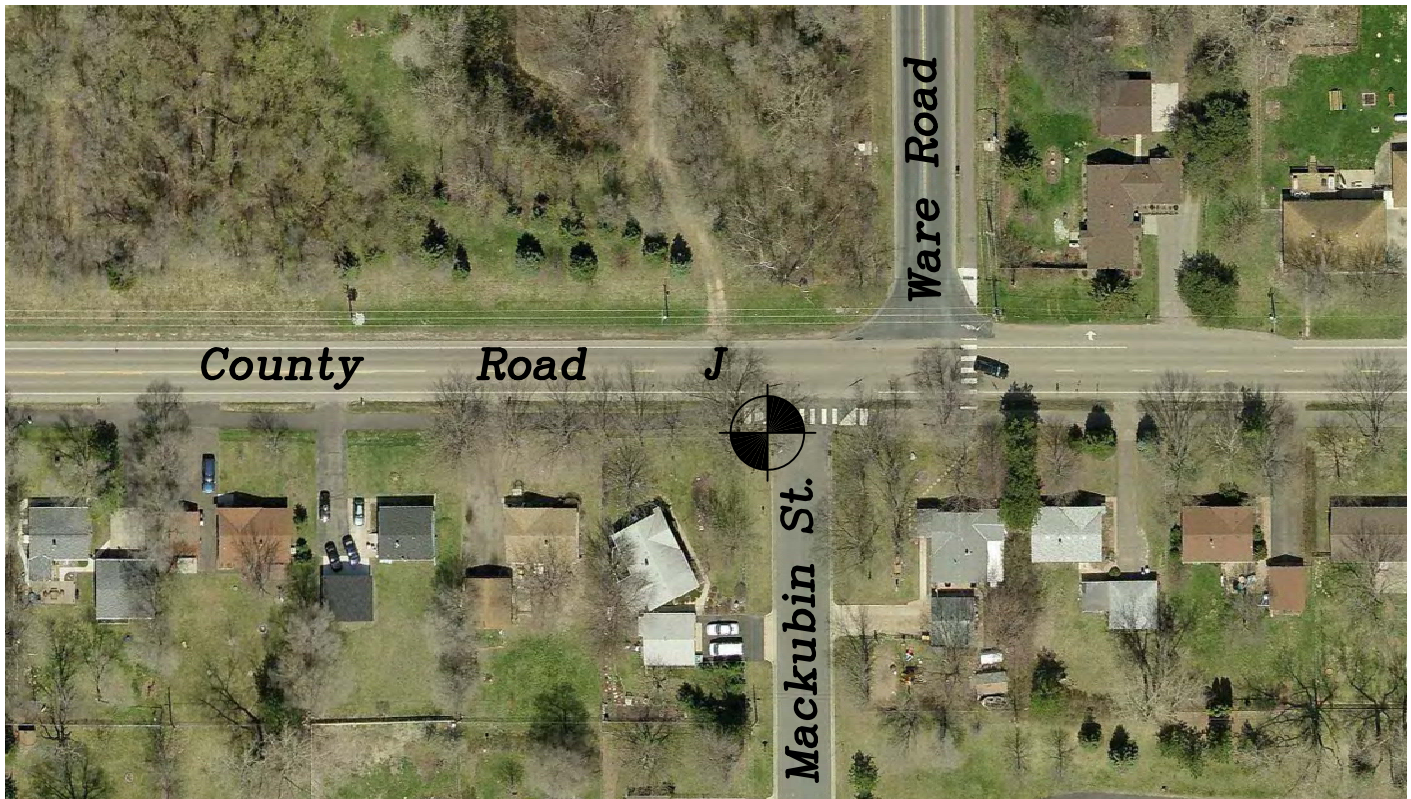
N.A.D. 1983 Coordinates County Project Coordinates
Northing <u>132394</u> Easting <u>537234</u> (1996 Adjustment)

National Geodetic Vertical Datum
Elevation <u>901.672</u> (1929 Adjustment)

North American Vertical Datum
Elevation <u>901.895</u> (1988 Adjustment)

## Description:

Top Nut Hydrant in the southwest quadrant of Mackubin Street and County Road J.



Previous Benchmark ID	<u>GREEN 2</u>
Reference Bench Loop	<u>BL-LINO 1</u>
Bench Loop Point No.	<u>148</u>
Anoka County Surveyor (ACS) No.	<u>NA</u>

Last Revised  
01/31/13

Date Set	<u>08/01/1994</u>
Warning Sign Set	<u>No</u>
Last Visited	<u>12/7/12</u>
Condition	<u>Good</u>