

CERTIFICATE OF ANOKA COUNTY BENCHMARK LOCATION

County of Anoka

State of Minnesota

Located in the SE 1/4 of

Section 23 Township 33 Range 25

Horizontal Location

Vertical Location

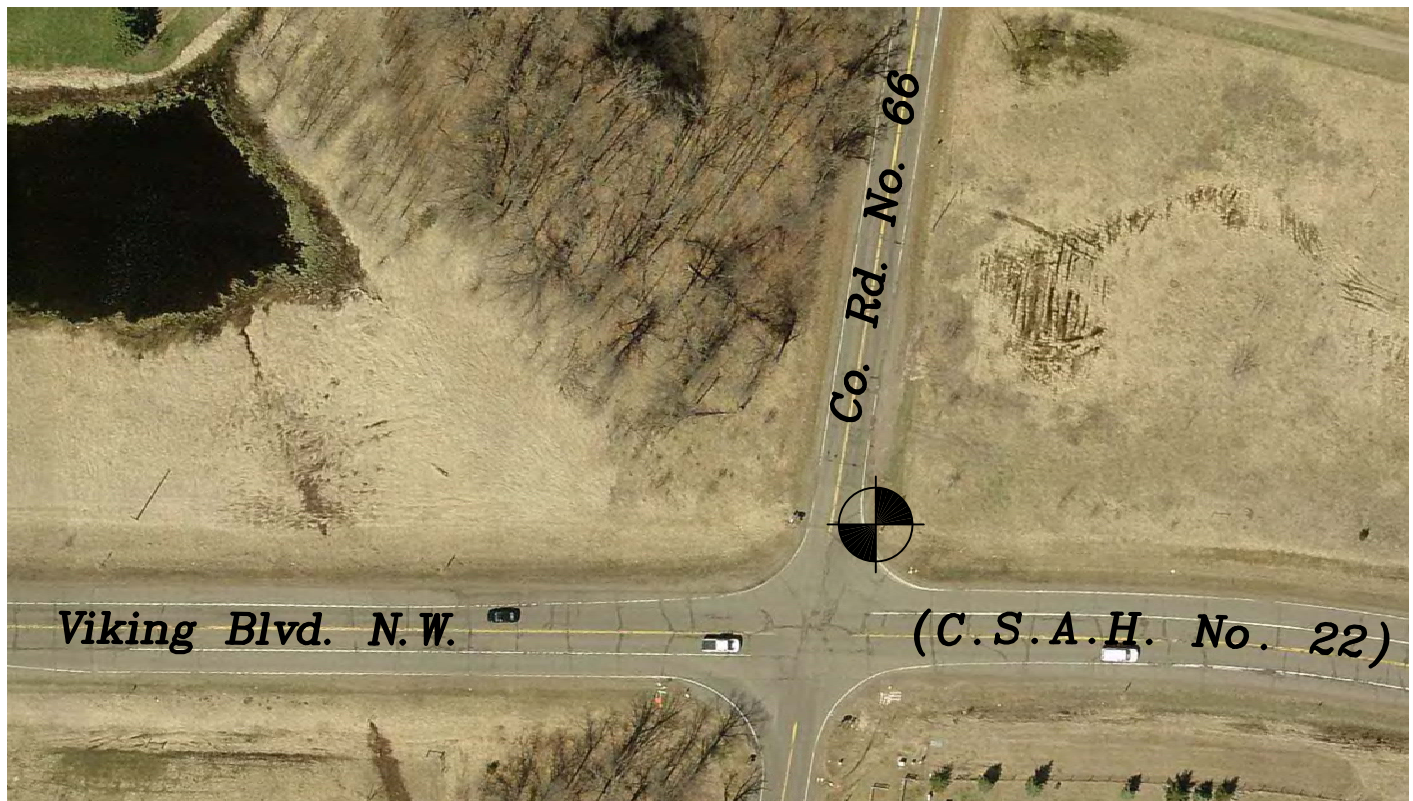
| |
|----------------------------------------------------------------------|
| N.A.D. 1983 Coordinates County Project Coordinates |
| Northing <u>207351</u> Easting <u>460996</u> (1996 Adjustment) |

| |
|----------------------------------------------|
| National Geodetic Vertical Datum |
| Elevation <u>913.46</u> (1929 Adjustment) |

| |
|----------------------------------------------|
| North American Vertical Datum |
| Elevation <u>913.72</u> (1988 Adjustment) |

Description:

Railroad spike in the southerly face of Power Pole No. 100157; this was set as part of a Bench Loop to check elevations on Co. Ditch 64. The old Benchmark that was once in a 24 in. Oak Tree was not found.



| | |
|---------------------------------|-----------------|
| Previous Benchmark ID | <u>GREEN 57</u> |
| Reference Bench Loop | <u>Ditch 64</u> |
| Bench Loop Point No. | <u>NA</u> |
| Anoka County Surveyor (ACS) No. | <u>NA</u> |

N

S

W ANOKA COUNTY SURVEYOR E

Last Revised

02/05/13

| | |
|------------------|-------------------|
| Date Set | <u>06/21/2012</u> |
| Warning Sign Set | <u>No</u> |
| Last Visited | <u>12/20/12</u> |
| Condition | <u>Good</u> |