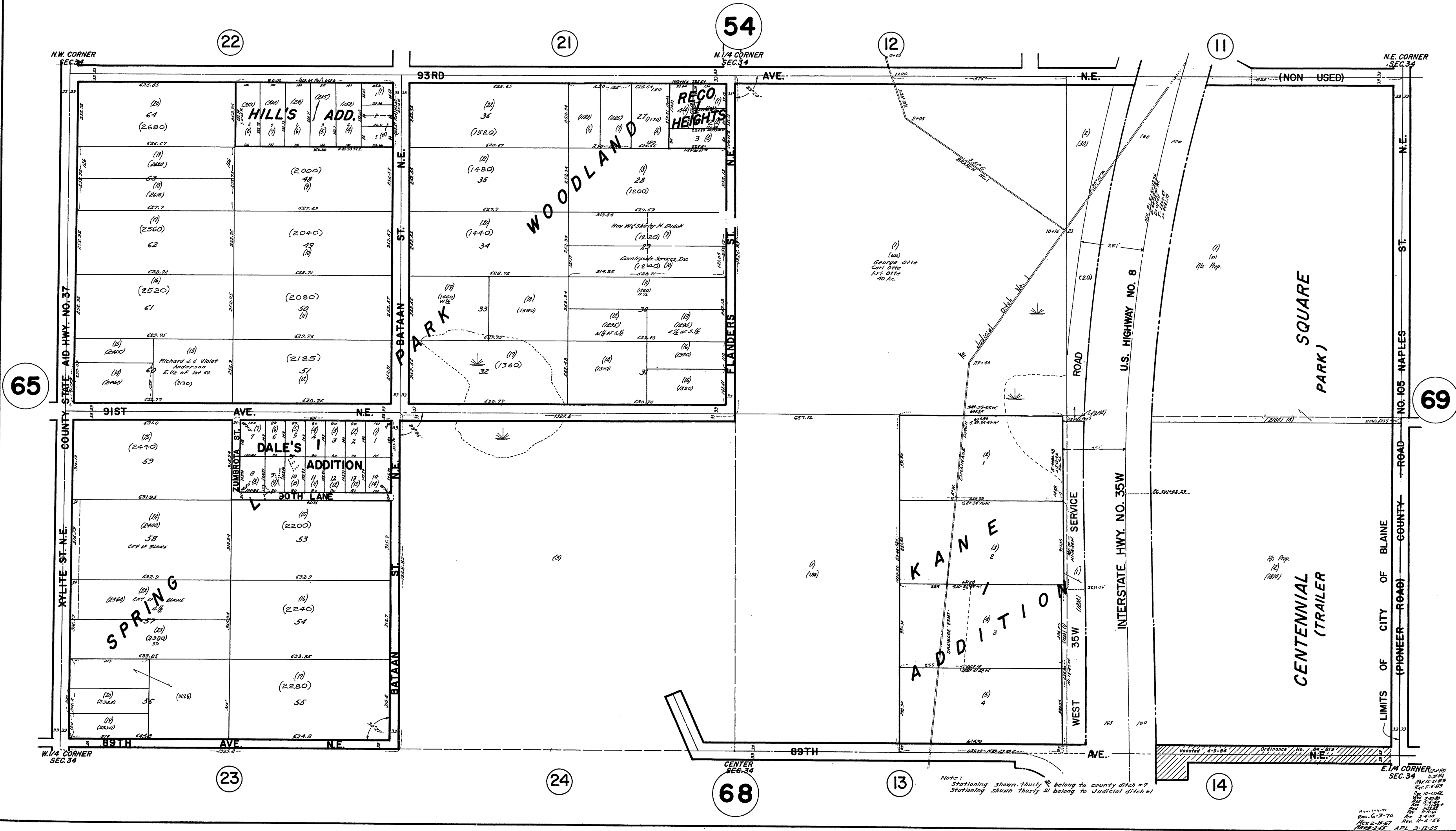


N 1/2 SEC. 34, T. 31, R. 23

CITY OF BLAINE

THIS IS A COMPILATION OF RECORDS AS THEY APPEAR IN THE ANOKA COUNTY OFFICES AFFECTING THE AREA SHOWN. THIS DRAWING IS TO BE USED ONLY FOR REFERENCE PURPOSES AND THE COUNTY IS NOT RESPONSIBLE FOR ANY INACCURACIES HEREIN CONTAINED.

14134



67

APR 10-1962
REV 2-20-60
REV 1-11-59
REV 1-11-57
REV 1-11-56
REV 1-11-55
REV 1-11-54
REV 1-11-53
REV 1-11-52
REV 1-11-51
REV 1-11-50
REV 1-11-49
REV 1-11-48
REV 1-11-47
REV 1-11-46
REV 1-11-45
REV 1-11-44
REV 1-11-43
REV 1-11-42
REV 1-11-41
REV 1-11-40
REV 1-11-39
REV 1-11-38
REV 1-11-37
REV 1-11-36
REV 1-11-35
REV 1-11-34
REV 1-11-33
REV 1-11-32
REV 1-11-31
REV 1-11-30
REV 1-11-29
REV 1-11-28
REV 1-11-27
REV 1-11-26
REV 1-11-25
REV 1-11-24
REV 1-11-23
REV 1-11-22
REV 1-11-21
REV 1-11-20
REV 1-11-19
REV 1-11-18
REV 1-11-17
REV 1-11-16
REV 1-11-15
REV 1-11-14
REV 1-11-13
REV 1-11-12
REV 1-11-11
REV 1-11-10
REV 1-11-9
REV 1-11-8
REV 1-11-7
REV 1-11-6
REV 1-11-5
REV 1-11-4
REV 1-11-3
REV 1-11-2
REV 1-11-1