

PAR 48
 JULIA FAYMOVILLE
 P. NE 1/4 NW 1/4 } SEC. 17-31-22
 P. SE 1/4 NW 1/4 }
 ENTIRE TRACT 42.80 AC
 OLD T.H. R/W 1.62 AC
 NEW T.H. R/W 3.92 AC
 23.76 AC BAL. (misc)
 15.90 AC NORTH (misc)
 16.89 AC SOUTH (misc)
 0.37 AC. (EXP 12-1-68)
 0.02 AC. (EXP 12-1-68)

PAR 49
 DONALD E. CAHOW, ETAL.
 P. NE 1/4 NW 1/4 SEC. 17-31-22
 ENTIRE TRACT W/O RDS. 1.16 AC.
 NEW T.H. R/W 1.16 AC. (misc)
 0.00

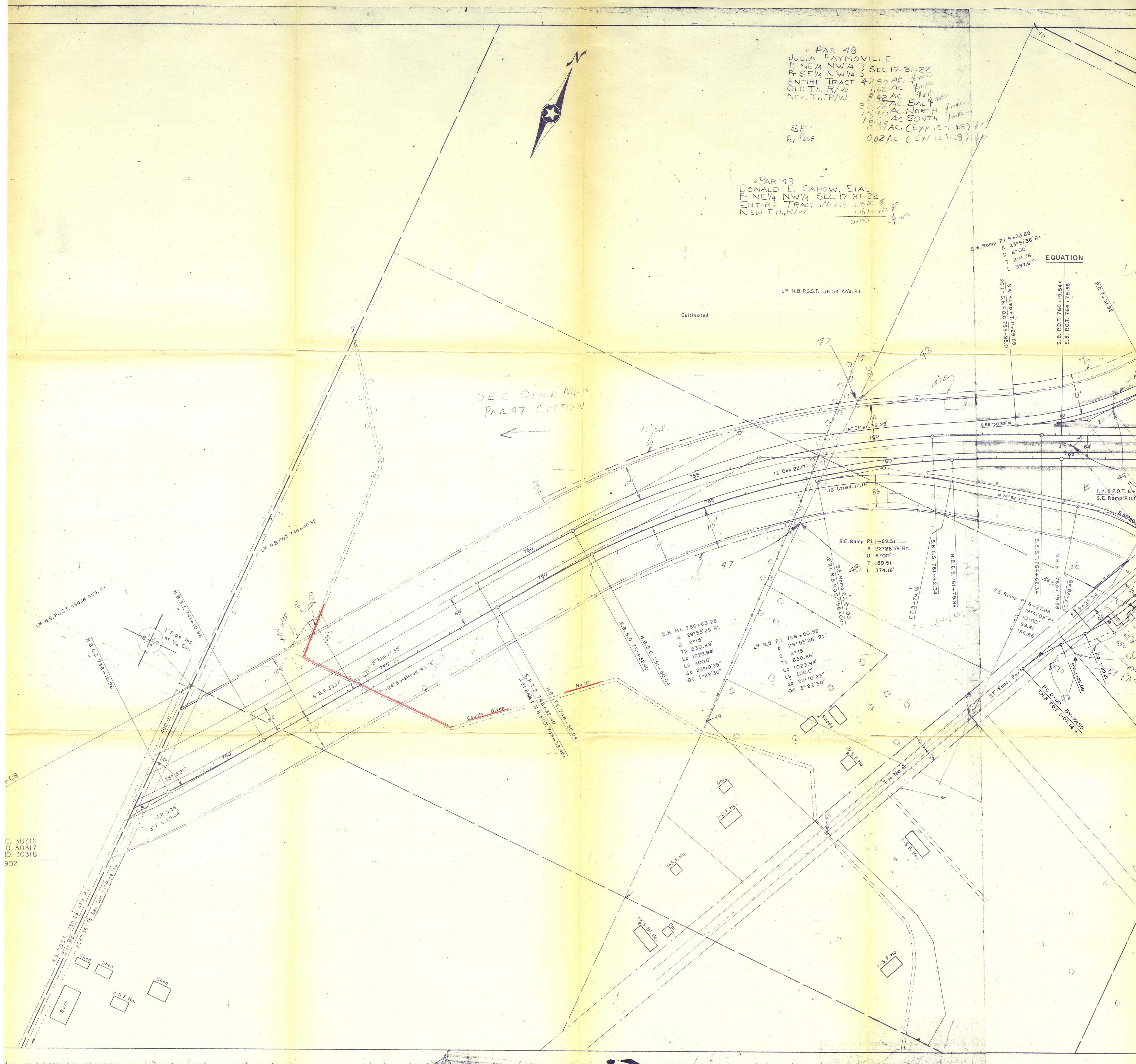
SW Ramp P.I. 9+33.68
 Δ 23°51'36" Rt.
 D 6°00'
 T 201.76
 L 397.67'

EQUATION

S.W. Ramp P.I. 11+29.59
 S.B. P.O.T. 765+19.54 =
 S.B. P.O.T. 764+79.98



SEE OTHER MAP
 PAR 47 CAPTION



Q. 30316
 IO. 30317
 IO. 30318
 902