

19

20

21

22

23

24

County Ditch  
No. 12\_E

30

29

28

27

26

25

County Ditch  
No. 12\_A

County Ditch  
No. 12\_B

County Ditch  
No. 12\_C

County Ditch  
No. 12\_D

31

32

33

34

35

36

County Ditch  
No. 12\_G

County Ditch  
No. 12\_F

6

5

4

3

2

1



FOR'S

SUBDIVISION

COON LAKE

GOV'T LOT 2

3

NO. 139

Culvert No. 1B

Culvert No. 1A

Culvert No. 2B

Culvert No. 2A

Culvert No. 3A

Culvert No. 3B

Culvert No. 4

GOV'T LOT 3

County Ditch

NO. 139

NO. 121A

GOV'T LOT

BREEZY SHORE LANE

SUBDIVISION

AUDITOR'S

FOR'S

COON LAKE

100TH

GOV'T

LOT

STATE OF MINNESOTA

STATE OF MINNESOTA

STATE OF MINNESOTA

STATE OF MINNESOTA

17.56 CH (1168.96) N85°30'

13.25 CH (874.50) S89°7'

12.48 CH (842.40) S27°57'

10.12 CH (645.60) S89°7'

80.00 CH (6320.00) S132°0'

60.00 CH (4200.00) S132°0'

30.00 CH (2100.00) S132°0'

288.00 CH (20160.00) S132°0'

288.00 CH (20160.00) S132°0'

288.00 CH (20160.00) S132°0'

288.00 CH (20160.00) S132°0'

288.00 CH (20160.00) S132°0'

288.00 CH (20160.00) S132°0'

288.00 CH (20160.00) S132°0'

288.00 CH (20160.00) S132°0'

288.00 CH (20160.00) S132°0'

288.00 CH (20160.00) S132°0'

288.00 CH (20160.00) S132°0'

288.00 CH (20160.00) S132°0'

288.00 CH (20160.00) S132°0'

288.00 CH (20160.00) S132°0'

288.00 CH (20160.00) S132°0'

17.56 CH (1168.96) N85°30'

13.25 CH (874.50) S89°7'

12.48 CH (842.40) S27°57'

10.12 CH (645.60) S89°7'

80.00 CH (6320.00) S132°0'

60.00 CH (4200.00) S132°0'

30.00 CH (2100.00) S132°0'

288.00 CH (20160.00) S132°0'

288.00 CH (20160.00) S132°0'

288.00 CH (20160.00) S132°0'

288.00 CH (20160.00) S132°0'

288.00 CH (20160.00) S132°0'

288.00 CH (20160.00) S132°0'

288.00 CH (20160.00) S132°0'

288.00 CH (20160.00) S132°0'

288.00 CH (20160.00) S132°0'

288.00 CH (20160.00) S132°0'

288.00 CH (20160.00) S132°0'

288.00 CH (20160.00) S132°0'

288.00 CH (20160.00) S132°0'

288.00 CH (20160.00) S132°0'

288.00 CH (20160.00) S132°0'





County  
Ditch

No. 12-B

GOV'T LOT 2

GOV'T LOT 3

LITTLE COON LAKE

Culvert No. 5

STATE OF MINNESOTA

STATE OF MINNESOTA

[0.011-0001]

[0.011-0001]

[0.011-0001]

[0.011-0001]

[0.011-0001]

[0.011-0001]

[0.011-0001]

[0.011-0001]

[0.011-0001]

[0.011-0001]

[0.011-0001]

[0.011-0001]

[0.011-0001]

STATE OF MINNESOTA

STATE OF MINNESOTA

[0.011-0001]

[0.011-0001]

[0.011-0001]

STATE OF MINNESOTA



TOWNSHIP OF LINWOOD

LIMITS OF TOWNSHIP OF LINWOOD

LIMITS OF CITY OF COLUMBUS

LIMITS OF CITY OF C

Culvert No. 6

STATE OF MINNESOTA

STATE OF MINNESOTA

STATE OF MINNESOTA

STATE OF MINNESOTA

County Ditch No. 12 LC

[a.o. 11-000]

[a.o. 12-000]

[a.o. 12-000]

[a.o. 11-000]

[a.o. 11-000]

[a.o. 12-000]

[a.o. 12-000]

[a.o. 11-000]

[a.o. 11-000]

[a.o. 12-000]

[a.o. 12-000]

[a.o. 12-000]

Pond

Pond

Pond

County Ditch No. 12

County Ditch No. 12

County Ditch No. 12

County Ditch No. 12

County Ditch No. 12



Y OF COLUMBUS

LIMITS OF CITY OF COLUMBUS

Culvert No. 7

Culvert No. 8

26

County Ditch

No. 12 D

101ST AVENUE







(0.0.11-0001)

(0.0.22-0001)

STATE OF MINNESOTA  
(0.1.1)

SAUL

Culvert No. 9

HORNISE

LIMITS OF TOWNSHIP OF LINWOOD

County Ditch No. 12

County Ditch No. 12

County Ditch No. 12

(0.0.11-0001)

(1)

(1)

(2)

(1)

(1)

MINNESOTA

(0.0.11-0001)

(1)

(1)

County Ditch  
No. 12

LIMITS OF TOWNSHIP OF LINWOOD

LIMITS OF CITY OF COLUMBUS

No. 12

LIMITS OF CITY OF COLUMBUS

ASSOCIATION  
RELEASE  
DOC. # 254724

POWER  
PARTIAL

UNITED  
PER

EASEMENT  
4-25-15

ASSOCIATION  
RELEASE

POWER  
PARTIAL

UNITED  
PER

APPROXIMATE IN-PLACE POWERLINE LOCATION PER AERIAL  
PHOTOGRAPHY PER ASSOC. PACE BOOK BIA, PAGE 306, 306, 307, 308

EAST 651±  
WEST 642±  
EAST 653±  
WEST 643±

24°24'57.46"  
128.945.00  
EASEMENT FOR ROAD WIDENING  
PER DOC. NO. 1971727.00

166.34  
369°12'20.7"  
202.41  
54°49'00"  
330  
240

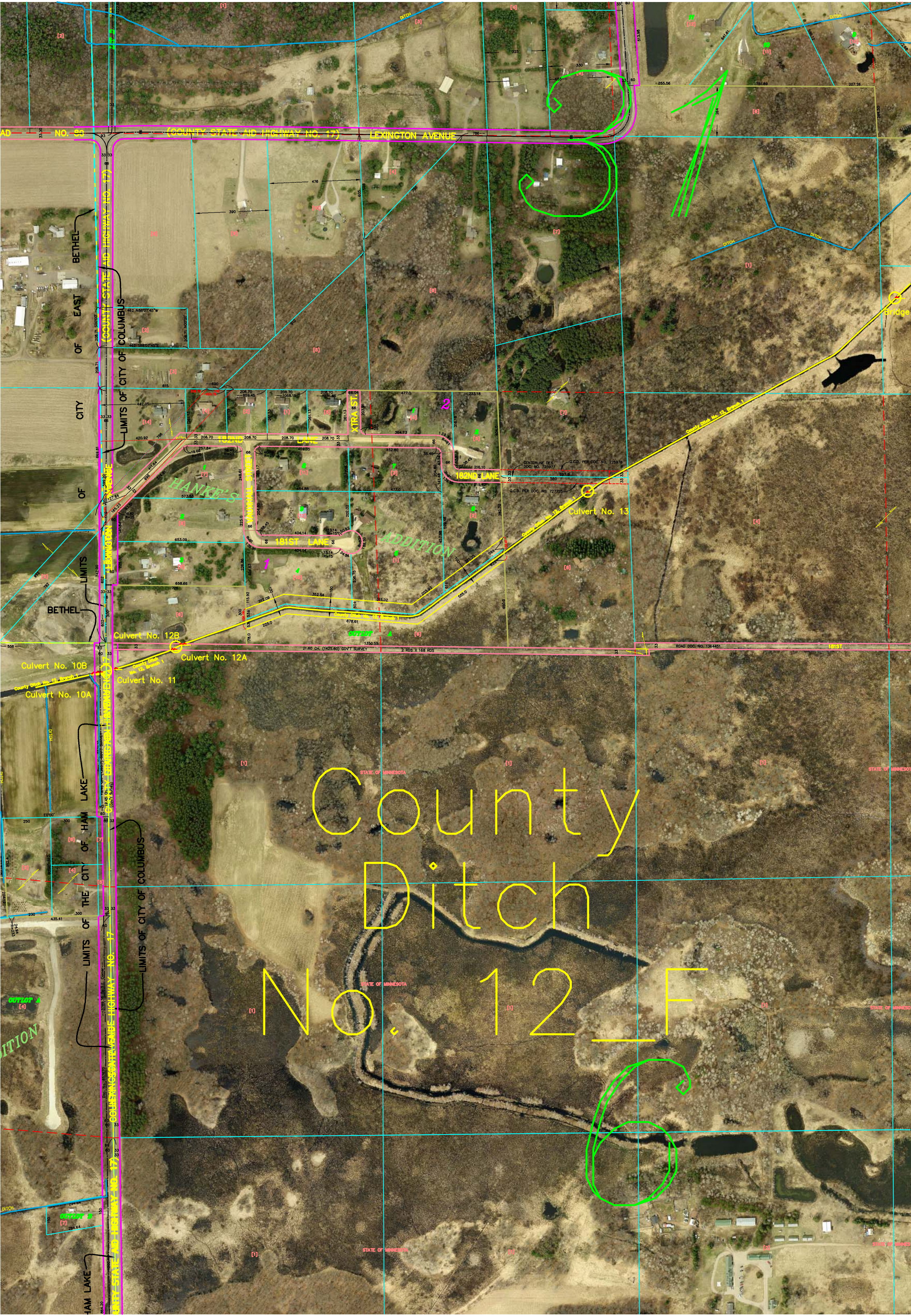
189°21'30" W, 1145.05

58°22'56" E, 1238.87

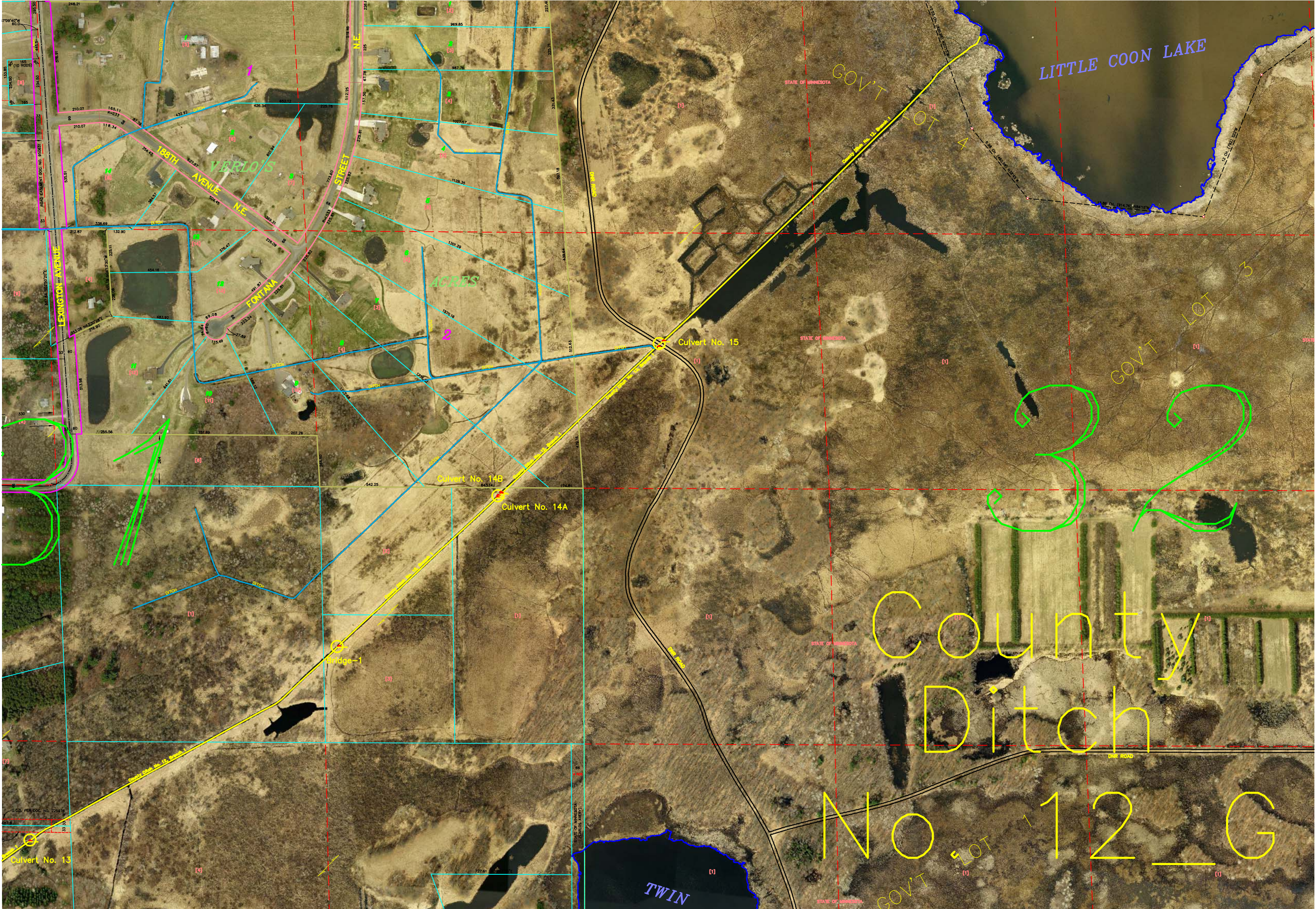
SOUTHWEST CORNER OF THE NORTH 20 ROSS

RIVE









LITTLE COON LAKE

GOV'T LOT 4

GOV'T LOT 3

County Ditch

No. 12 G

GOV'T LOT 1

VERLO'S

ACRES

188TH AVENUE NE

FONTANA STREET NE

LEXINGTON AVENUE

Culvert No. 15

Culvert No. 14B

Culvert No. 14A

Bridge-1

Culvert No. 13

TWIN

STATE OF MINNESOTA

STATE OF MINNESOTA

STATE OF MINNESOTA

STATE OF MINNESOTA

STATE OF MINNESOTA  
(CARLOS AVENY)