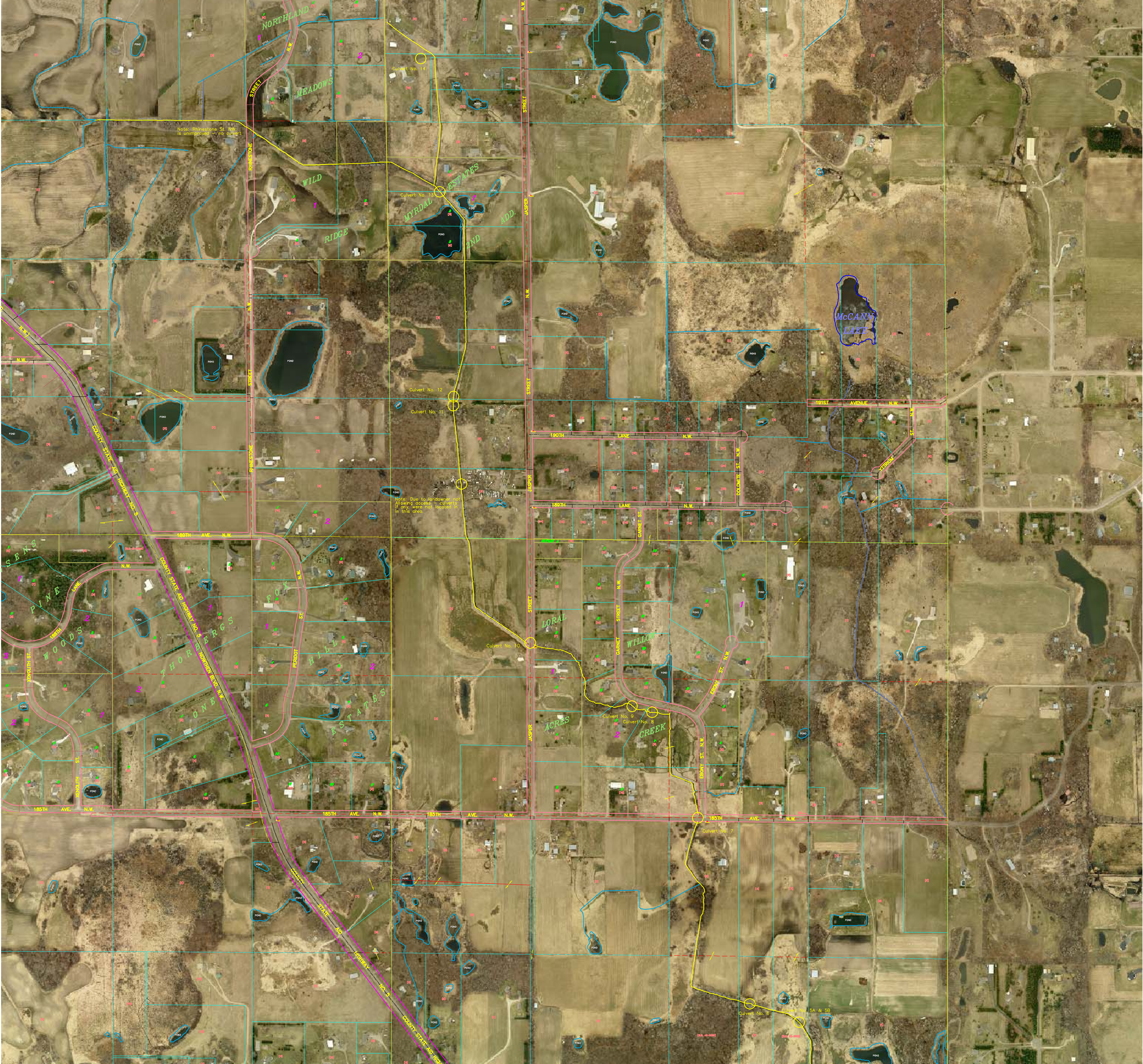


PLAT NO. 58 ANOKA COUNTY ROADWAY B/M PLAT NO. 58
CITY STATE AID HIGHWAY NO. 22 VIKING BLVD. N.W. COUNTY STATE AID HIGHWAY NO. 22 VIKING BLVD. N.W.



LIMITS OF THE CITY OF NOWTHEN CITY OF NORTHERN LIMITS OF THE CITY OF NOWTHEN CITY OF NORTHERN
LIMITS OF THE CITY OF RAMSEY

County
Ditch
No 14

