

N 1/2 SEC. 23 T. 32 R. 22

TOWNSHIP OF COLUMBUS

THIS IS A COMPILATION OF RECORDS AS THEY APPEAR IN THE ANOKA COUNTY OFFICES AFFECTING THE AREA SHOWN. THIS DRAWING IS TO BE USED ONLY FOR REFERENCE PURPOSES AND THE COUNTY IS NOT RESPONSIBLE FOR ANY INACCURACIES HEREIN CONTAINED.

38723

52

N.W. CORNER SEC. 23

N 1/4 CORNER SEC. 23

N.E. CORNER SEC. 23

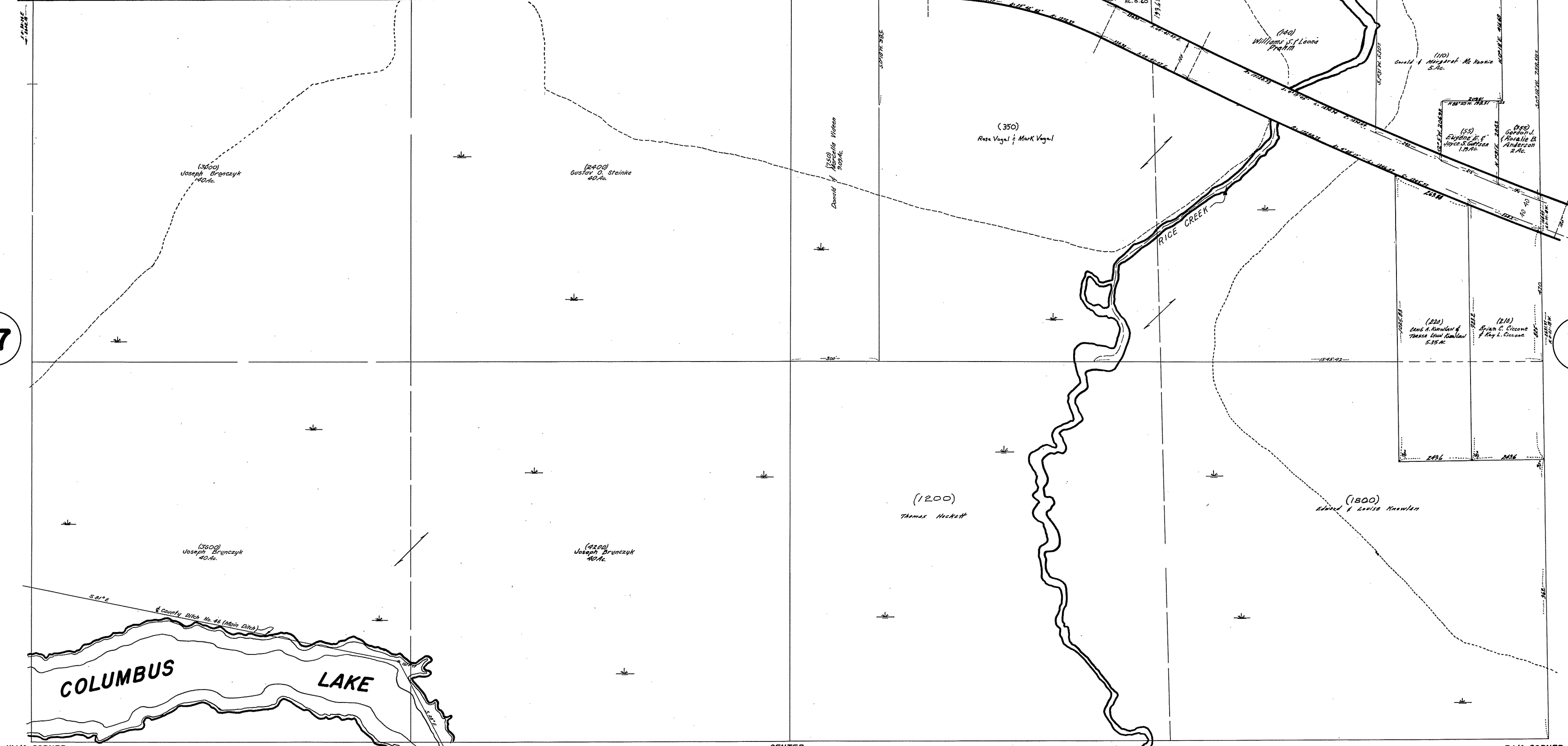
ANOKA COUNTY HIGHWAY RIGHT-OF-WAY PLAT NO. 3

COUNTY STATE AID HIGHWAY NO. 23

LAKE DRIVE N.E.

67

71



W 1/4 CORNER SEC. 23

CENTER SEC. 23

E 1/4 CORNER SEC. 23

70

REV. 2-10-75 P
REV. 8-14-75
REV. 3-9-67
REV. 5-4-63
REV. 1-3-62
REV. 3-18-54