

# N 1/2 SEC. 24 T. 32 R. 22

TOWNSHIP OF COLUMBUS

THIS IS A COMPILATION OF RECORDS AS THEY APPEAR IN THE ANOKA COUNTY OFFICES AFFECTING THE AREA SHOWN. THIS DRAWING IS TO BE USED ONLY FOR REFERENCE PURPOSES AND THE COUNTY IS NOT RESPONSIBLE FOR ANY INACCURACIES HEREIN CONTAINED.

38724

50

69

72

N.W. CORNER SEC. 24

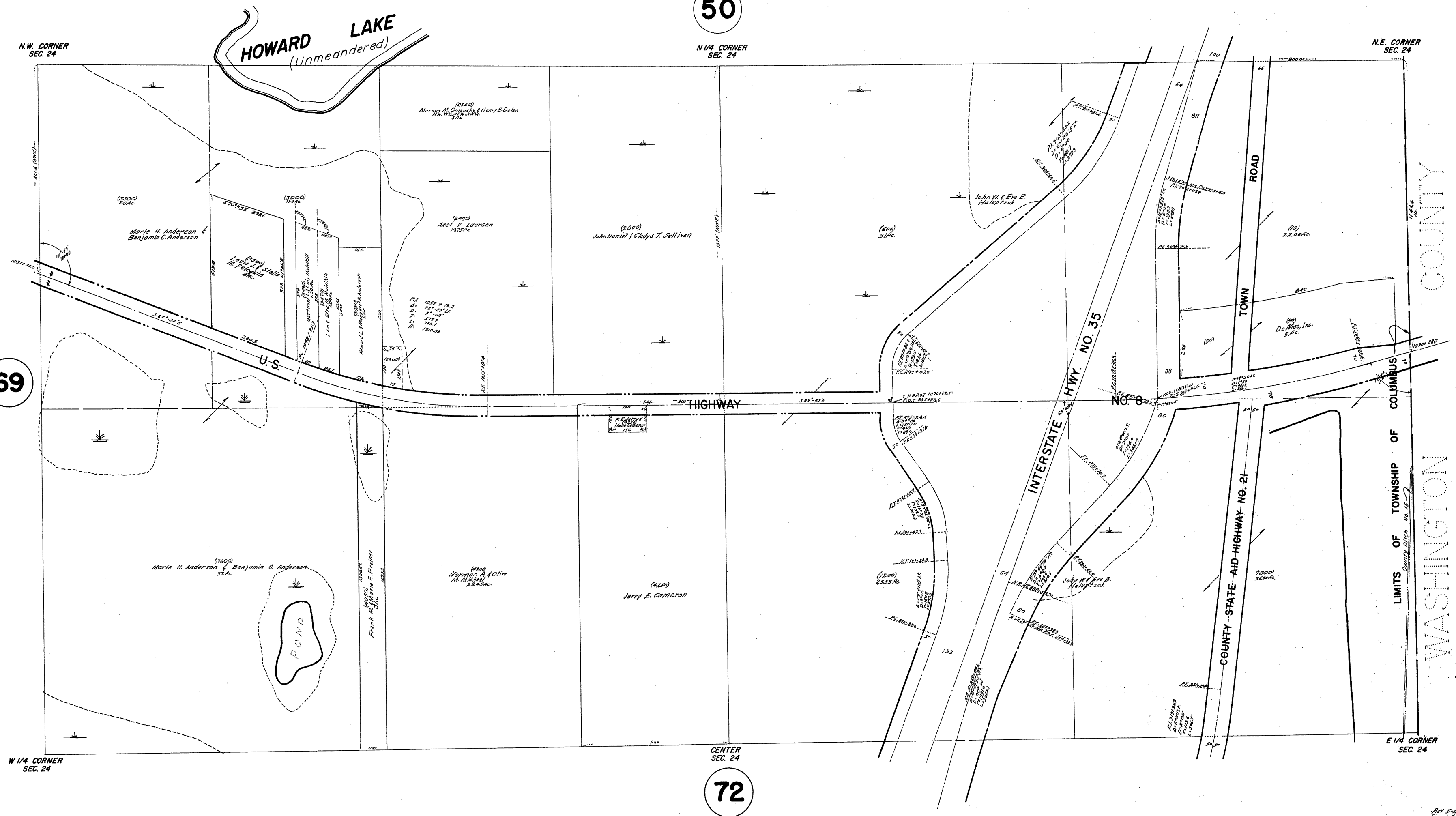
N 1/4 CORNER SEC. 24

N.E. CORNER SEC. 24

W 1/4 CORNER SEC. 24

E 1/4 CORNER SEC. 24

HOWARD LAKE  
(Unmeandered)



LIMITS OF TOWNSHIP OF COLUMBUS  
WASHINGTON COUNTY