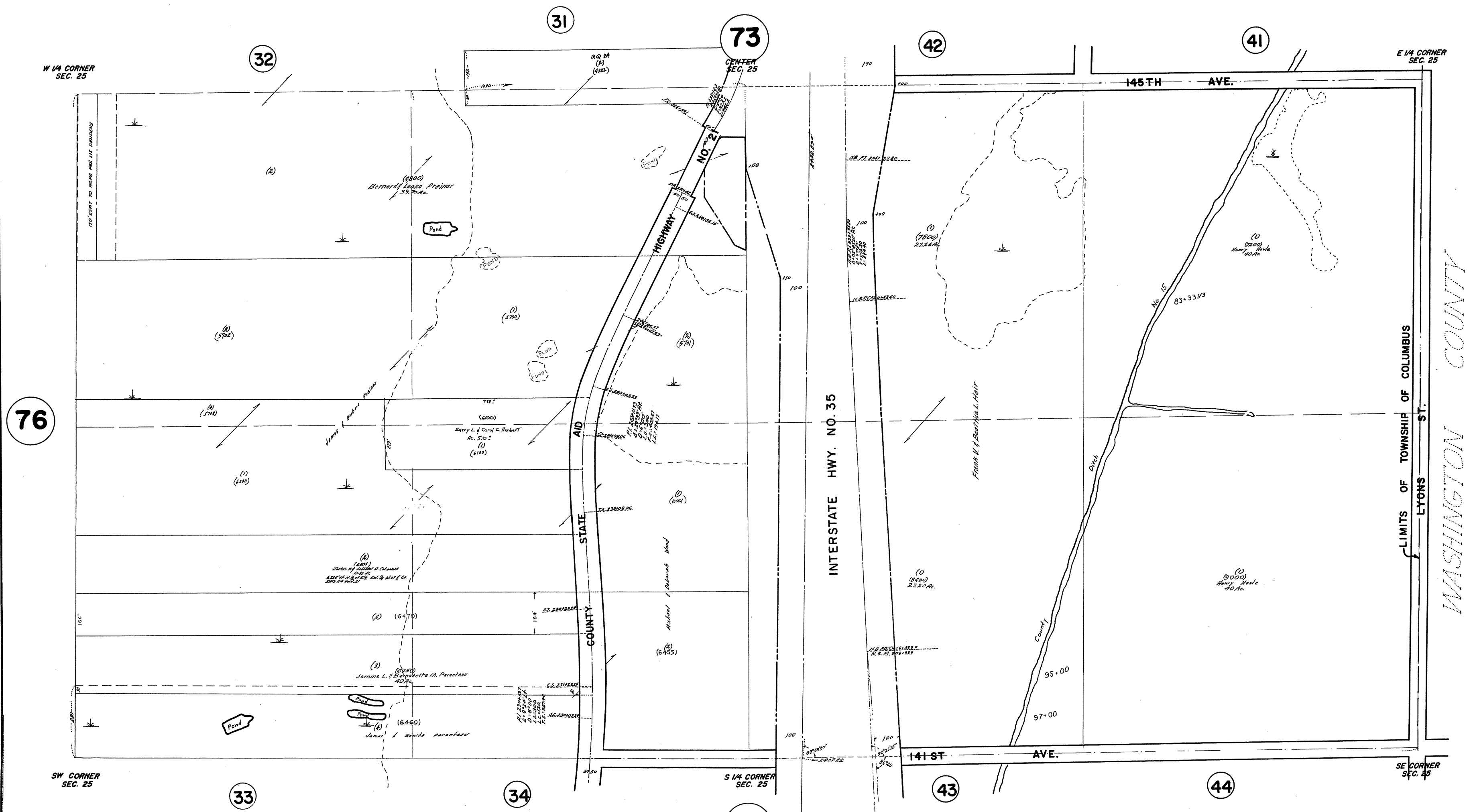


S 1/2 SEC. 25, T. 32, R. 22

TOWNSHIP OF COLUMBUS

THIS IS A COMPILATION OF RECORDS AS THEY APPEAR IN THE ANOKA COUNTY OFFICES AFFECTING THE AREA SHOWN. THIS DRAWING IS TO BE USED ONLY FOR REFERENCE PURPOSES AND THE COUNTY IS NOT RESPONSIBLE FOR ANY INACCURACIES HEREIN CONTAINED.

38725



76

95

WASHINGTON COUNTY

LIMITS OF TOWNSHIP OF COLUMBUS

LYONS ST.

PLAT 25-25
REVISED
JULY 19-1957
BY S. J. H. S.
PLAT 25-25
REVISED
JULY 19-1957
BY S. J. H. S.