

**ANOKA COUNTY**  
**COUNTY DITCH INSPECTION REPORT**

**DITCH # 16**

**DATE: 7/13/94**

**BY: P K Ruud**

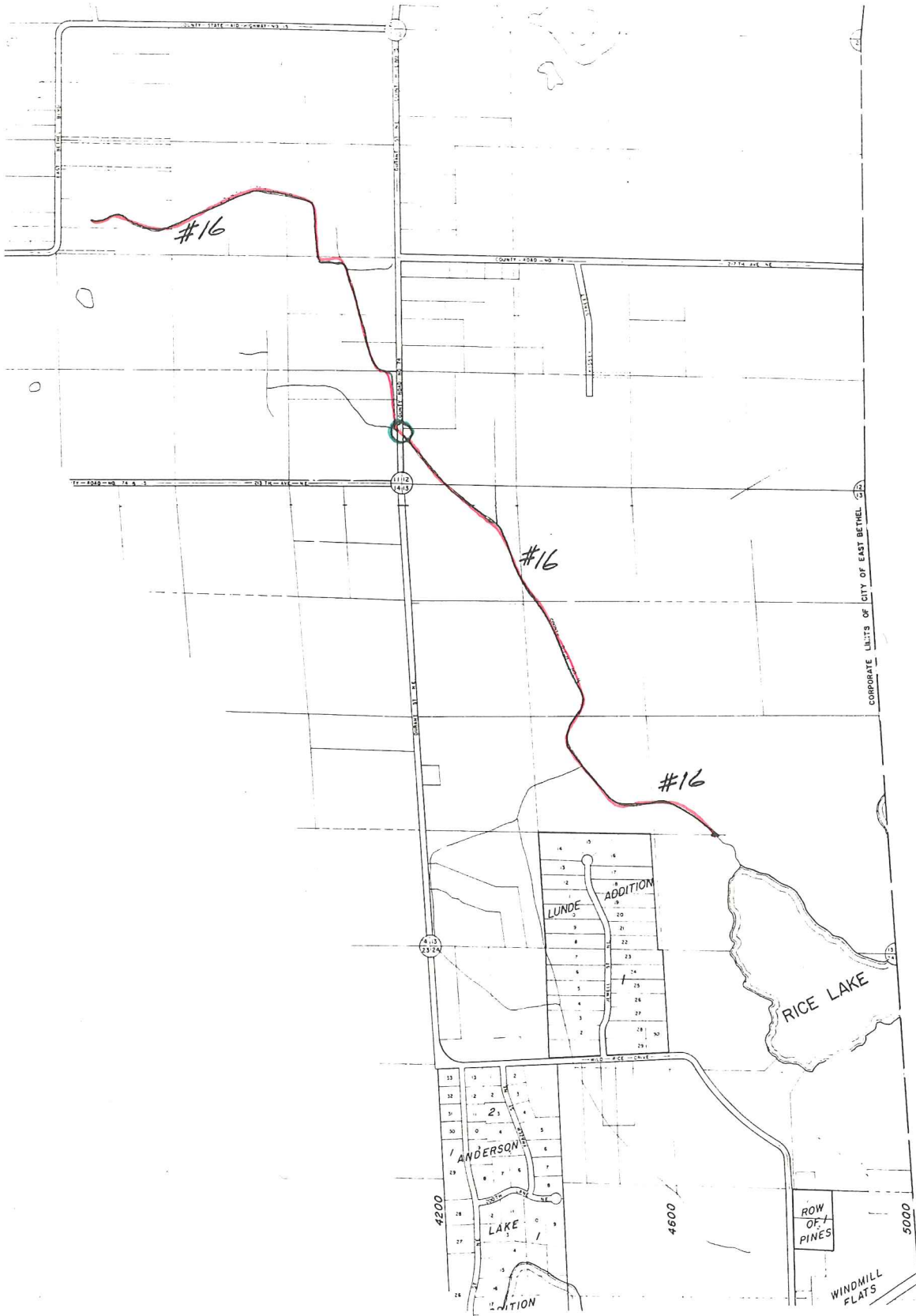
**COMMUNITIES: East Bethel**

**REMARKS:**

CR #15/74

The ditch at this crossing (Durant St ) is well defined and flowing slowly. There is some use of the peatland in this area and the ditches have been maintained.

**ACTIVITIES:**



**CO DIT #16**