

ANOKA COUNTY

COUNTY DITCH INSPECTION REPORT

DITCH # 17

DATE: 7/7/94

BY: P K Ruud

COMMUNITIES: Blaine, Coon Rapids, Fridley

REMARKS:

Hugo St	Ditch well defined and flowing.
Ironton St	Ditch well defined and flowing.
85th Ave	Ditch well defined and flowing.
Ever green	Ditch well defined and flowing.
TH # 47	Ditch well defined and flowing.
CSAH # 3	Ditch well defined and flowing.
T H # 10	Ditch well defined and flowing.
89th Ave NE	Ditch well defined and flowing.
Westwood School	Ditch well defined and flowing.
Van Buren St	Ditch well defined and flowing.
Tyler St	Ditch well defined and flowing.
Polk St	Ditch well defined and flowing.
Cloverleaf Pkwy	Ditch well defined and flowing.

ACTIVITIES:

The ditch from CSAH # 1(EAST River Road) to the Mississippi River runs thru back yards and pipe. The system apparently works , although I could not see much of it to verify it's condition.

#17

7/7/94
PKR

Hugo St. - Well defined & flowing

Ironton St. " " "

85th " " "

Evergreen Indus. " " "

TH 47 (NE) " " "

(SB)

#3 " " "

TH 10 (EB) " " "

(WB) " " "

89th " " "

Westwood School Dr. " " "

Van Buren " " "

Tyler " " "

Polk " " "

Cloverleaf " " "

PUBLIC DRAINAGE DITCH INVENTORY FORM
(Laws of 1990, Chapter 601, Section 27)

1. Drainage authority name: Anoka County (Blaine/Coon Rapids/Fridley)
2. Drainage ditch name and number: #17
3. Ditch location and drainage area boundary: (shown on attached quadrangle map)
4. Drainage area in acres: 1170 ; Benefitted area in acres: 320
5. Approximate length in miles: Open Ditch 3.67 Buried Tile 0
6. Year constructed: 1893 ; Original cost: \$ 427.50
7. Are original plans on file? Yes No ; Location: Anoka County Courthouse
8. Date of original plans: 1892
9. Are "as built" plans on file? Yes No ; Location: _____
10. Year(s) improved: None
11. Are improvement plans on file? Yes No N/A ; Location: _____
12. Year(s) repaired: None
13. Are repair plans on file? Yes No N/A ; Location: _____
14. If the ditch was transferred from a county or joint county ditch authority to a watershed district or WMO, is the transfer order on file? Yes No NA
15. Is the list of lands benefitted and damaged on file? Yes No
16. Have the benefits and damages been redetermined? Yes No ; If yes, year(s) of redetermination: _____
17. Has right-of-way been acquired for a 1-rod permanent grassed strip? Yes No ; If yes, has it been maintained? Yes No N/A
18. Is there a maintenance fund for the ditch? Yes No ; If yes, current balance in maintenance fund: \$ _____
19. What was the last year maintenance work was performed by drainage authority:
1968

20. Have other local units or private parties performed maintenance work on the ditch?
Yes No ; List parties: State & cities when Northtown Center was built some parts relocated.

21. Have the alignment, grade, bottom width, or bridge or culvert crossings been materially changed from the original or improved construction, without going through formal ditch proceedings? Yes No

22. Is the ditch inspected annually ; every 2-5 years ; every 5-10 years; only when a problem arises ; or never ? Year of last inspection: Mid 70's

23. Approximate percentage of the ditch's contributing drainage area that is currently urbanized: 100% ; rural: 0%

24. Have any substantial areas of wetlands originally totally drained by the ditch reestablished themselves due to lack of ditch maintenance? Yes No

25. What is the general condition of the ditch?

- a. well-maintained
- b. fairly well-maintained
- c. poorly maintained
- d. very poorly maintained
- e. functionally abandoned

26. Describe the existing condition of the ditch, including erosion/sedimentation problems:

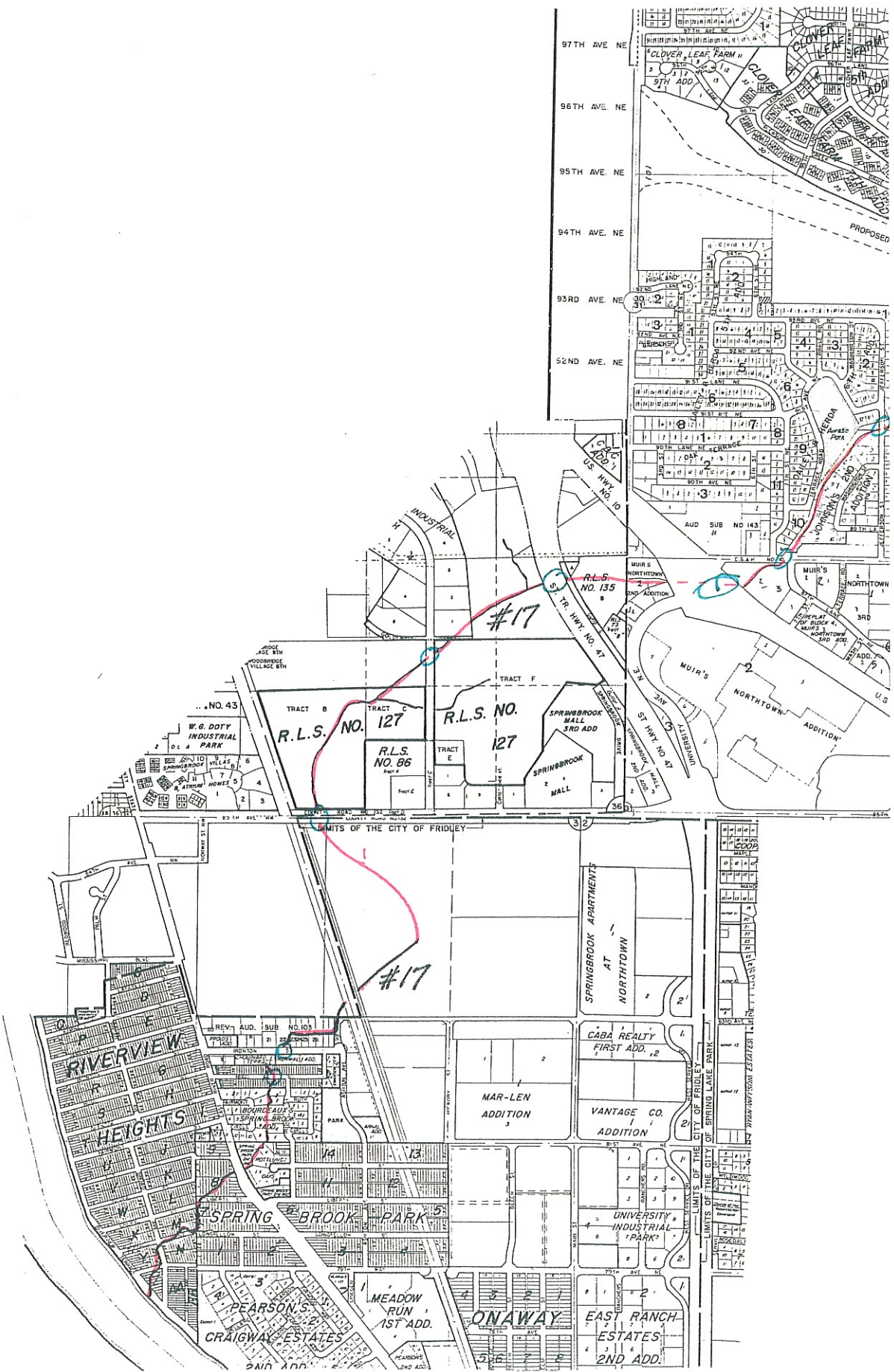
Ditch fairly well maintained in heavily developed area. Ditch cleaned during intense development in the late 50's. Heavy flow with development tends to keep ditch cleaned.

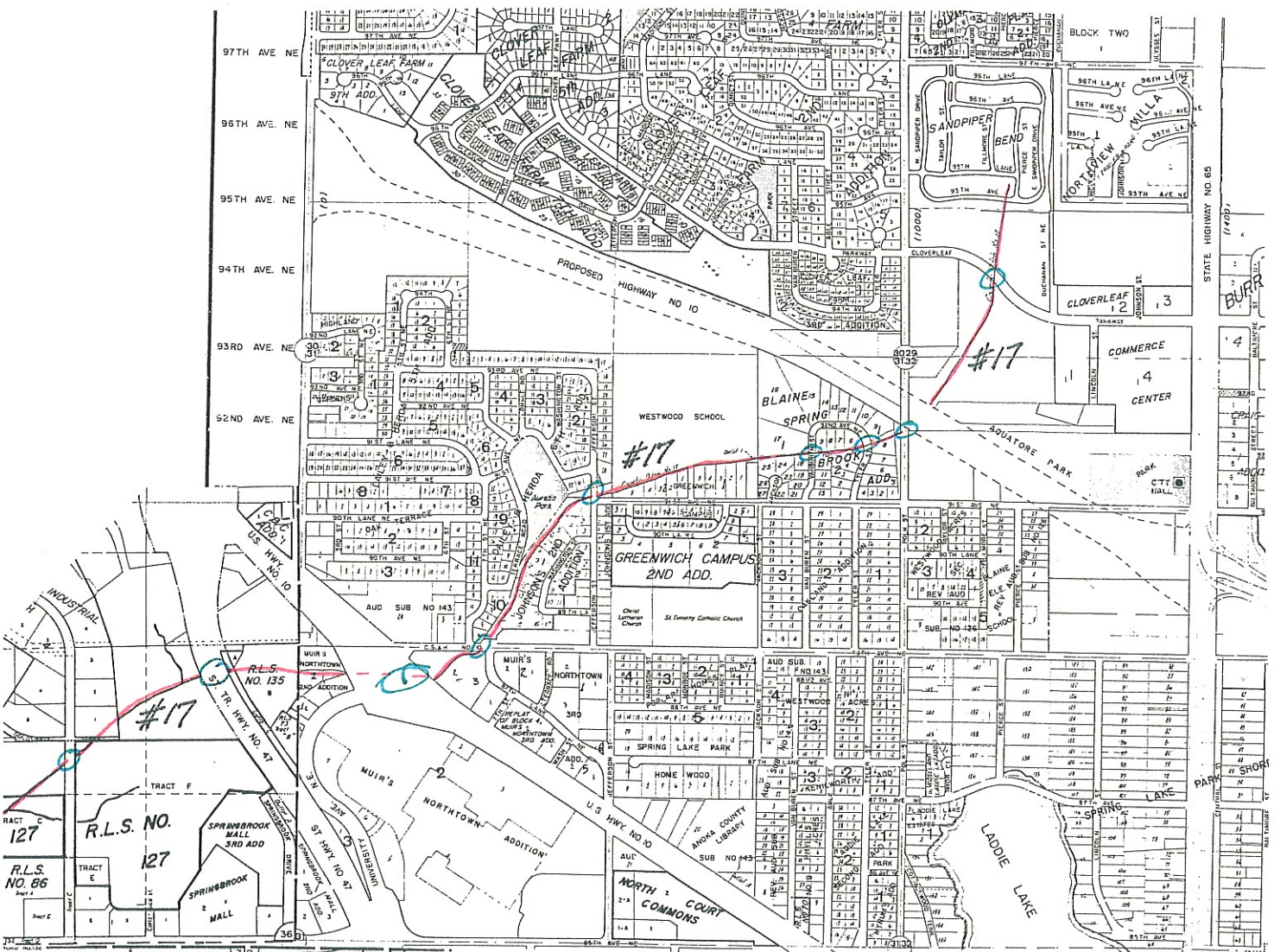
27. Does the ditch continue to serve a useful purpose to one or more properties? Yes No ; Estimated acres of agricultural land currently benefitting: _____

28. What plans are there for future management of the ditch? A. Monitor the ditch for problems that occur, such as deadfalls, unapproved culverts/crossings, or filling, that block or impede the normal flow. B. Review, with municipalities & the WMO's, the impact of new development on the drainage system. C. Monitor & repair/replace drainage structures at county highway crossed by the ditch.

29. Additional comments or recommendations for statutory changes: _____

- A. Need legislation that allows for maintenance of the county ditch system
 - B. Need changes in county ditch legislation that provides for a method (s) of assessing property within a drainage area to pay for approved repairs or improvements.
-
-
-





CO DIT #17

