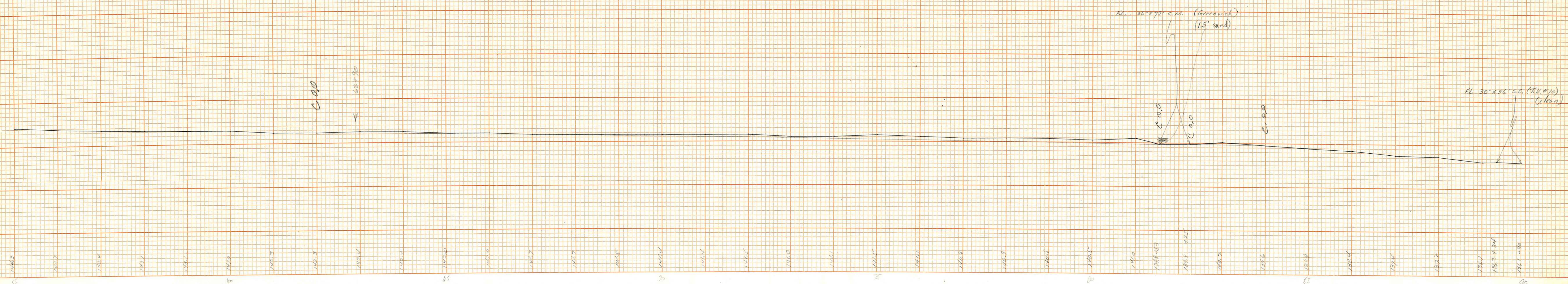


Old ditch Sta 55+00 to Sta 62+50  
 New ditch Sta 62+50 to 81+50  
 Old ditch Sta 81+50 to Mrs. River



PRINTED IN U.S.A.  
 ON 100% RAG PAPER MADE IN U.S.A.

"PERFECT" CROSS SECTION  
 10 X 10 = ONE INCH  
 EUGENE DIETZGEN CO.

PRINTED IN U.S.A.  
 ON 100% RAG PAPER MADE IN U.S.A.

"PERFECT" CROSS SECTION  
 10 X 10 = ONE INCH  
 EUGENE DIETZGEN CO.

PRINTED IN U.S.A.  
 ON 100% RAG PAPER MADE IN U.S.A.

55

6

65

70

75

80

85

90

C.O.O.

62+50

C.O.O.

C.O.O.

C.R.O.

FL. 30'-x-56' s.c. (T.H.M. 10)  
 (clean)

FL. 36'-7 1/2' c.m. (Greenwich)  
 (1.5' sand)

7442.3

7442.7

7443.0

7443.4

7443.7

7444.0

7444.3

7444.7

7445.0

7445.4

7445.8

7446.2

7446.6

7447.0

7447.4

7447.8

7448.2

7448.6

7449.0

7449.4

7449.8

7450.2

7450.6

7451.0

7451.4

7451.8

7452.2

7452.6

7453.0

7453.4

7453.8

7454.2

7454.6

7455.0

7455.4

7455.8

7456.2

7456.6

7457.0