

N 1/2 SEC. 31, T. 31, R. 23

CITY OF BLAINE

THIS IS A COMPILATION OF RECORDS AS THEY APPEAR IN THE ANOKA COUNTY OFFICES AFFECTING THE AREA SHOWN. THIS DRAWING IS TO BE USED ONLY FOR REFERENCE PURPOSES AND THE COUNTY IS NOT RESPONSIBLE FOR ANY INACCURACIES HEREIN CONTAINED.

14131

60

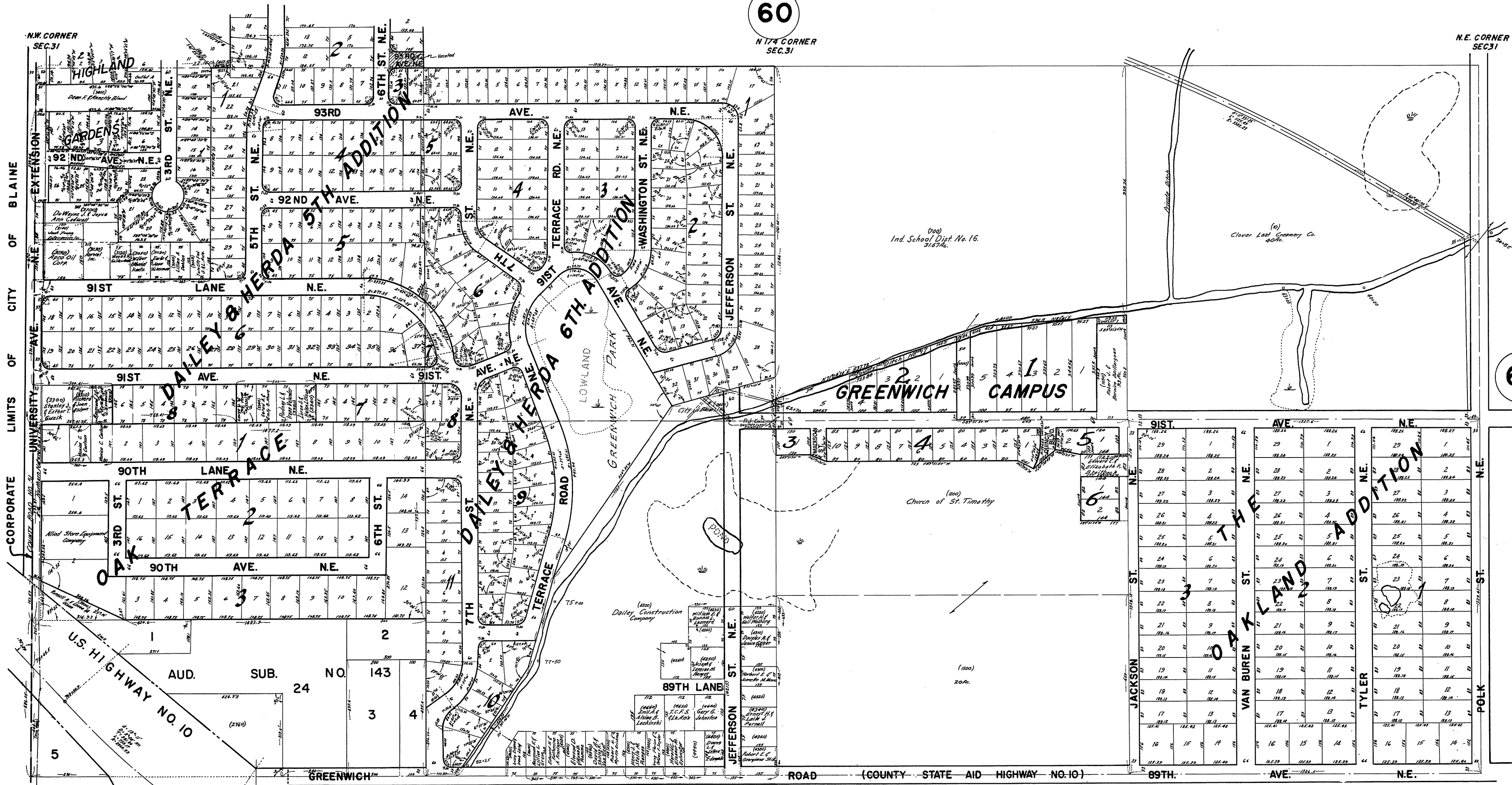
N 1/4 CORNER SEC. 31

63

62

CENTER SEC. 31

E 1/4 CORNER SEC. 31



W 1/4 CORNER SEC. 31

E 1/4 CORNER SEC. 31

REV. 3-10-68
REV. 7-5-67 R. 23-20
REV. 2-3-67 R. 23-16