

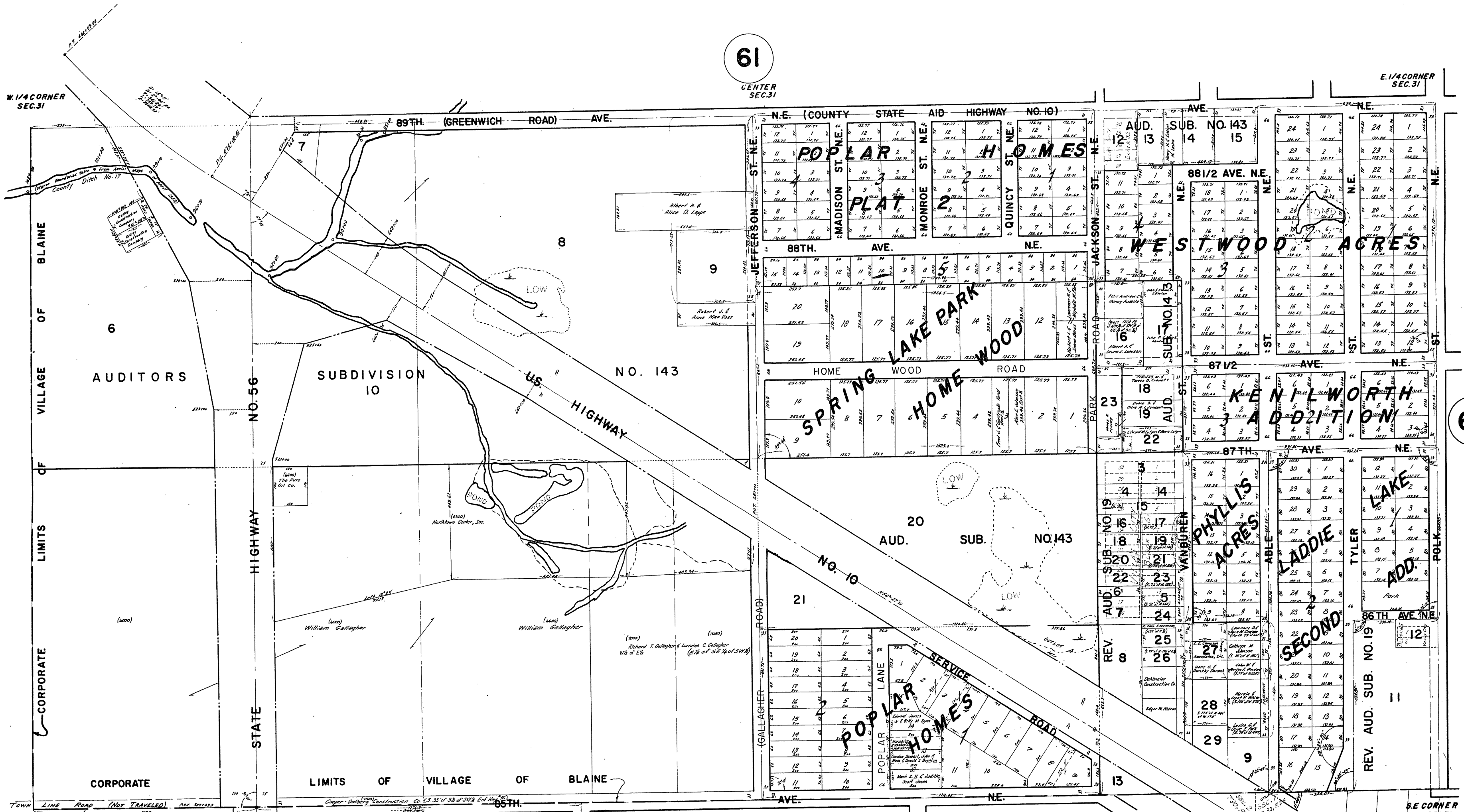
S. 1/2 SEC. 31, T. 31, R. 23

VILLAGE OF BLAINE

THIS IS A COMPILATION OF RECORDS AS THEY APPEAR IN THE ANOKA COUNTY OFFICES AFFECTING THE AREA SHOWN. THIS DRAWING IS TO BE USED ONLY FOR REFERENCE PURPOSES AND THE COUNTY IS NOT RESPONSIBLE FOR ANY INACCURACIES HEREIN CONTAINED.

14131

61
CENTER SEC. 31



TOWN LINE ROAD (NOT TRAVELED) DIST. 500 FT. 23000CH (16.00) (Government Swamp) 1917

Established by County Commissioners as recorded in Book 2, Page 344 of Commissioners Records. (As with given)

S. 1/4 CORNER SEC. 31

S.E. CORNER SEC. 31

Rev. 5-4-48
Rev. 5-2-49
Rev. 4-1-50
R.W.A. 5-28-51