





County
19C

15

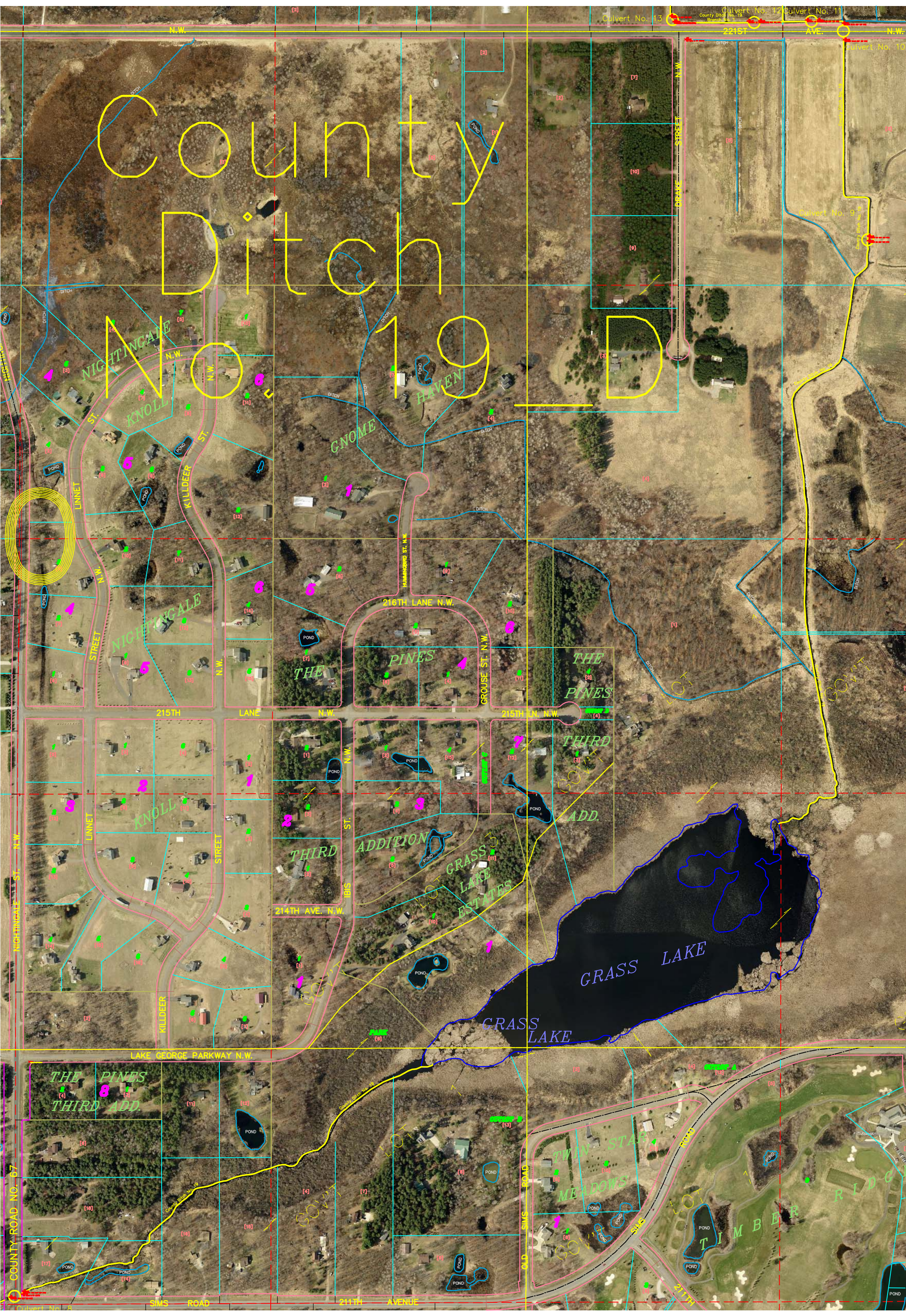
MARTINSON'S
ADD.

BEAUDRY'S
ADDITION

WALDEN
ESTATE

PINES
SECOND
ADD.





County Ditch 190D

NIGHTINGALE KNOLL

GNOME HAVEN

NIGHTINGALE KNOLL

THE PINES

THE PINES

KNOLL

THIRD ADDITION

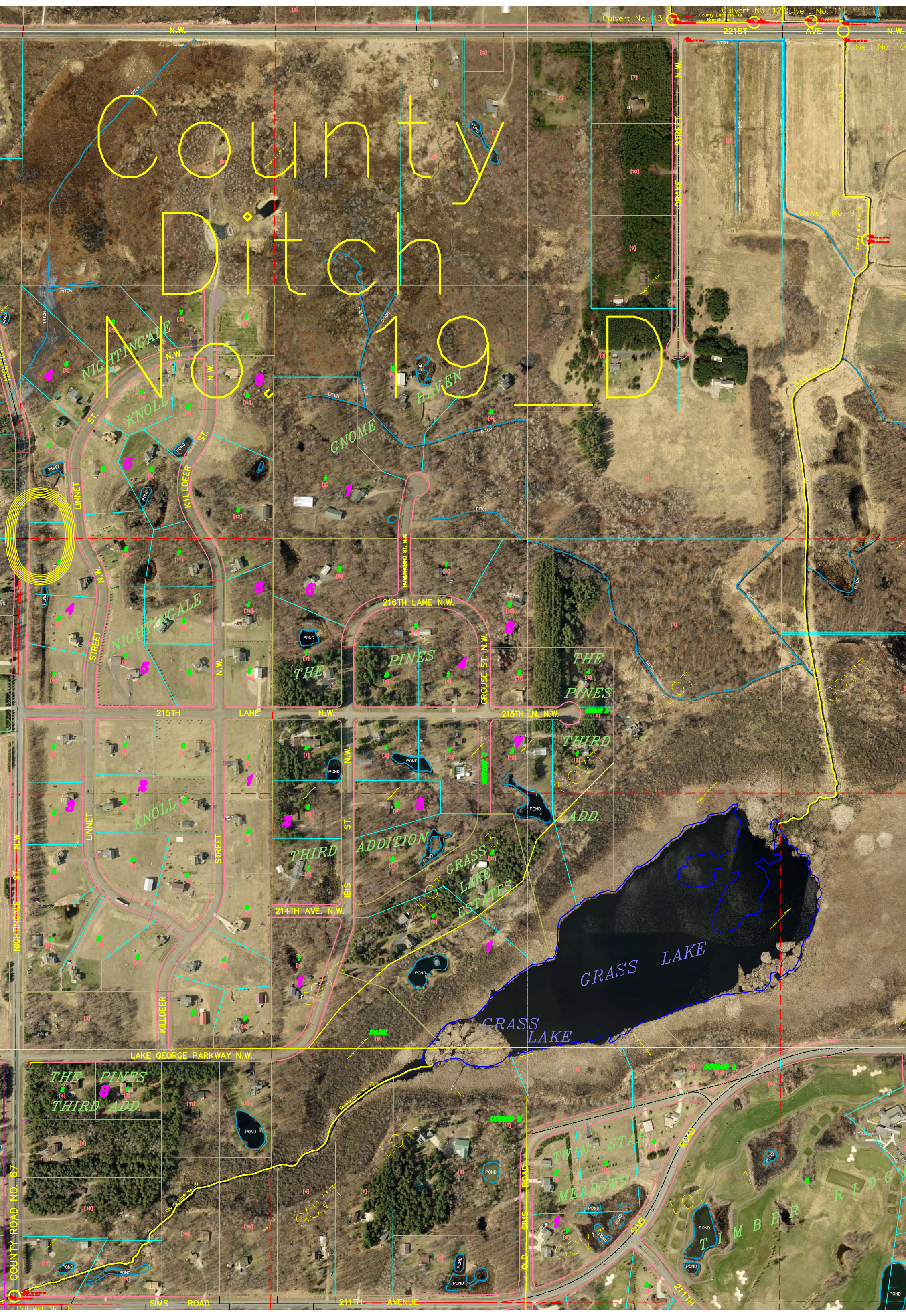
GRASS LAKE ESTATES

THIRD ADD

THE PINES THIRD ADD

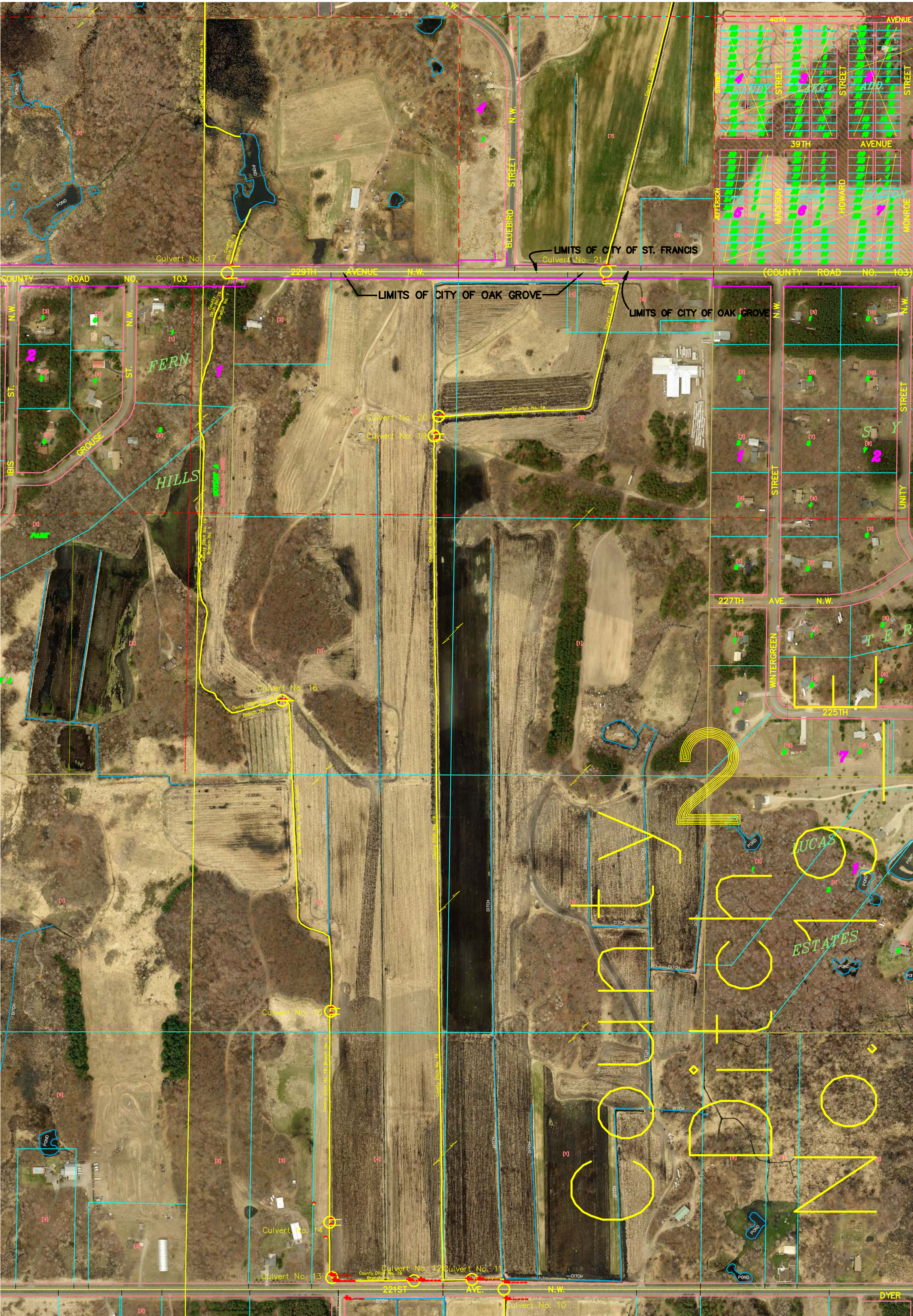
TWIN STAR MEADOWS

LOT 101 TIMBER RIDGE



Map labels and annotations:

- Streets: NIGHTINGALE ST., KNOLL ST., GNOME HAVEN ST., THE PINES ST., THIRD ADD ST., GRASS LAKE ESTATES ST., TWIN STAR MEADOWS ST., TIMBER RIDGE ST., 215TH LANE N.W., 216TH LANE N.W., 214TH AVE. N.W., LAKE GEORGE PARKWAY N.W., SMS ROAD, 211TH AVENUE.
- Properties: NIGHTINGALE KNOLL, GNOME HAVEN, THE PINES, THIRD ADD, GRASS LAKE ESTATES, TWIN STAR MEADOWS, LOT 101 TIMBER RIDGE.
- Infrastructure: Culvert No. 13, Culvert No. 12, Culvert No. 11, Culvert No. 10, Culvert No. 9, DITCH, POND.
- Other: County Ditch 190D, County Ditch Branch No. 13, County Ditch Branch No. 12, County Ditch Branch No. 11, County Ditch Branch No. 10, County Ditch Branch No. 9.



Culvert No. 17

LIMITS OF CITY OF ST. FRANCIS
Culvert No. 21

LIMITS OF CITY OF OAK GROVE

LIMITS OF CITY OF OAK GROVE

COUNTY ROAD NO. 103

(COUNTY ROAD NO. 103)

IBIS ST. N.W.
GROUSE ST. N.W.
FERN HILLS

Culvert No. 20
Culvert No. 19

227TH AVE. N.W.

225TH

Culvert No. 16

2
UCAS ESTATES

Culvert No. 15

Culvert No. 14

Culvert No. 13

Culvert No. 12
Culvert No. 11

2215T AVE. N.W.
Culvert No. 10

DYER

County

Ditch

No. 19

19

WINTERGREEN STREET N.W.

N.W. COUNTY STATE AID HIGHWAY NO. 24

COUNTY STATE AID HIGHWAY NO. 24

Culvert No. 24

Culvert No. 18



SHADOW RIDGE

ESTATES

SHADOW RIDGE

ESTATES

SHADOW RIDGE
DRAKE STREET N.W.

231ST LANE N.W.

Culvert No. 23

Culvert No. 22

