

S 1/2 SEC. 26, T. 32 R. 24

CITY OF ANDOVER

THIS IS A COMPILATION OF RECORDS AS THEY APPEAR IN THE ANOKA COUNTY OFFICES AFFECTING THE AREA SHOWN. THIS DRAWING IS TO BE USED ONLY FOR REFERENCE PURPOSES AND THE COUNTY IS NOT RESPONSIBLE FOR ANY INACCURACIES HEREIN CONTAINED.

65926

51

32

31

42

41

W. 1/4 CORNER SEC. 26

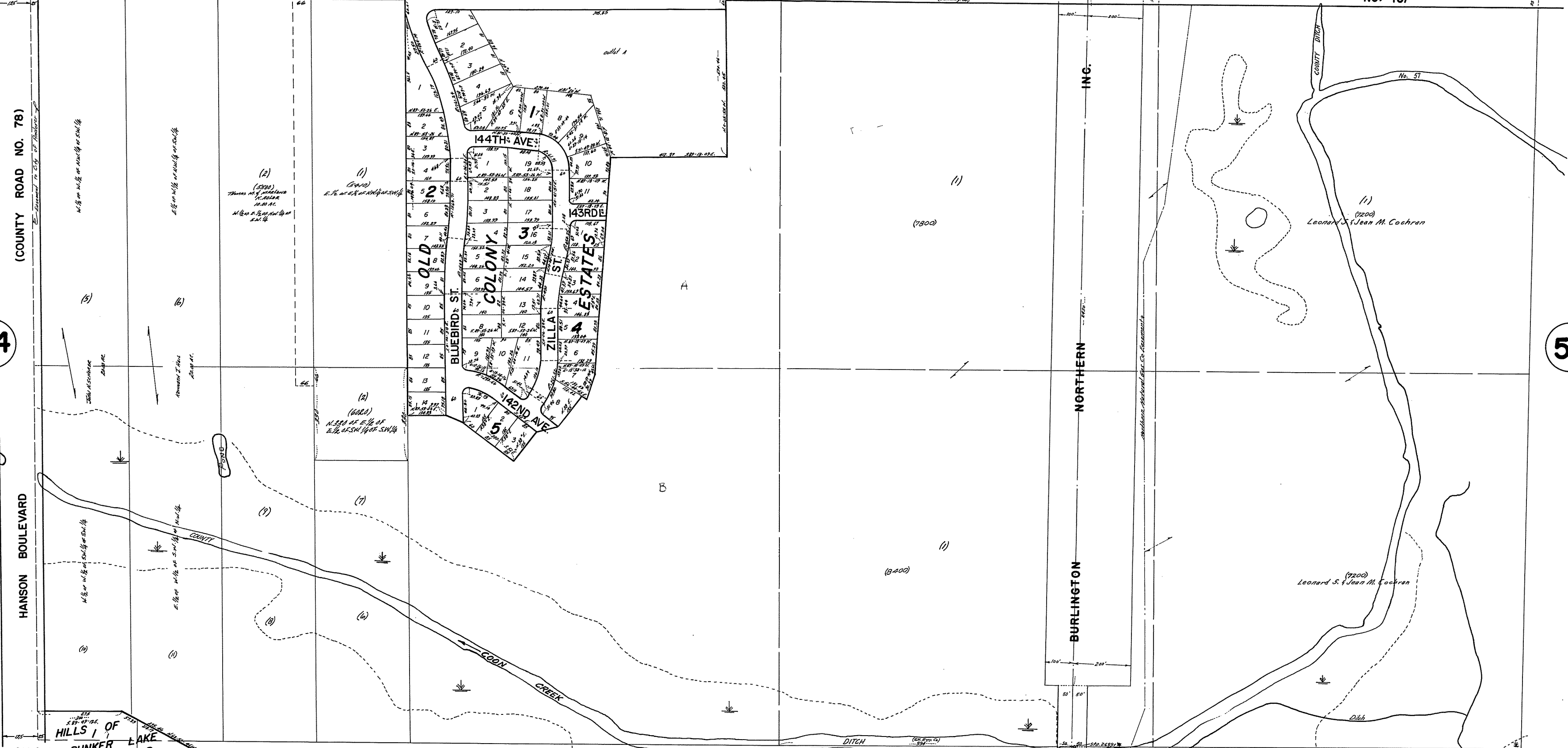
CENTER SEC. 26

S. E. 1/4 CORNER SEC. 26

SERVICE ROAD

NO. 16

COUNTY STATE AID ANDOVER BLVD. NW HIGHWAY



54

50

HANSON BOULEVARD

BURLINGTON NORTHERN

HILLS OF LAKE BUNKER 3RD ADD. PARK

S. 1/4 CORNER SEC. 26

S. E. CORNER SEC. 26

33

34

69

43

44

REVISED 7-16-57