

S 1/2 SEC. 31, T. 32, R. 23

CITY OF HAM LAKE

THIS IS A COMPILATION OF RECORDS AS THEY APPEAR IN THE ANOKA COUNTY OFFICES AFFECTING THE AREA SHOWN. THIS DRAWING IS TO BE USED ONLY FOR REFERENCE PURPOSES AND THE COUNTY IS NOT RESPONSIBLE FOR ANY INACCURACIES HEREIN CONTAINED.

73031

61

CENTER SEC. 31

32

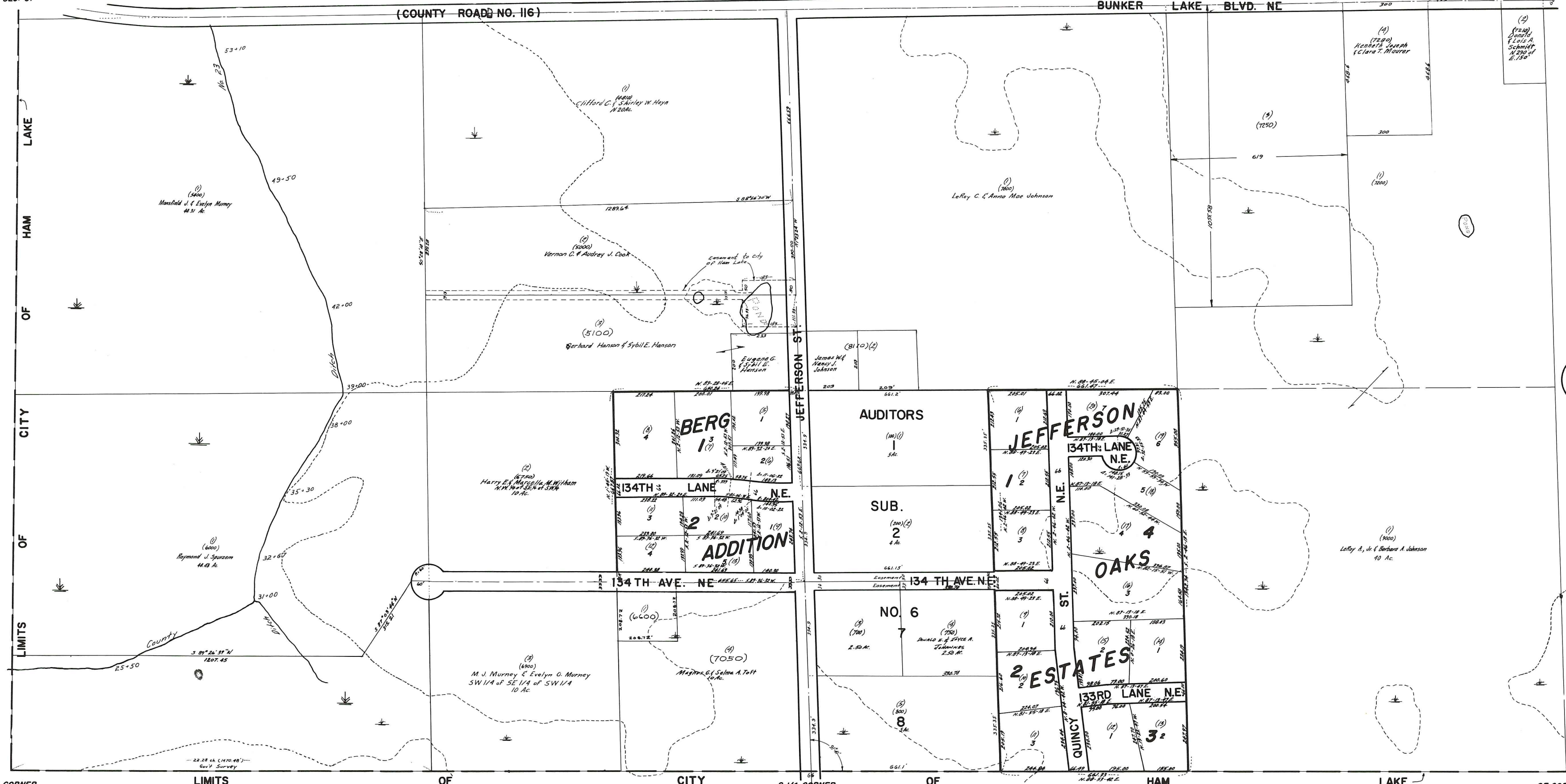
31

42

41

E 1/4 CORNER SEC. 31

W 1/4 CORNER SEC. 31



64

SW CORNER SEC. 31

LIMITS

OF

34

CITY

S 1/4 CORNER SEC. 31

OF

43

HAM

LAKE

SE CORNER SEC. 31

44

REV. 10-29-92
 Rev. 9-11-94
 Rev. 6-21-94
 Rev. 7-22-94
 Rev. 11-5-98
 Rev. 2-14-99
 Rev. 8-14-99
 Rev. 7-16-01
 H.W.A. 5-8-57