



County Ditch

NO. 27

CITY OF NOWTHEN

CITY OF NOWTHEN

CITY OF RAMSEY

CITY OF RAMSEY

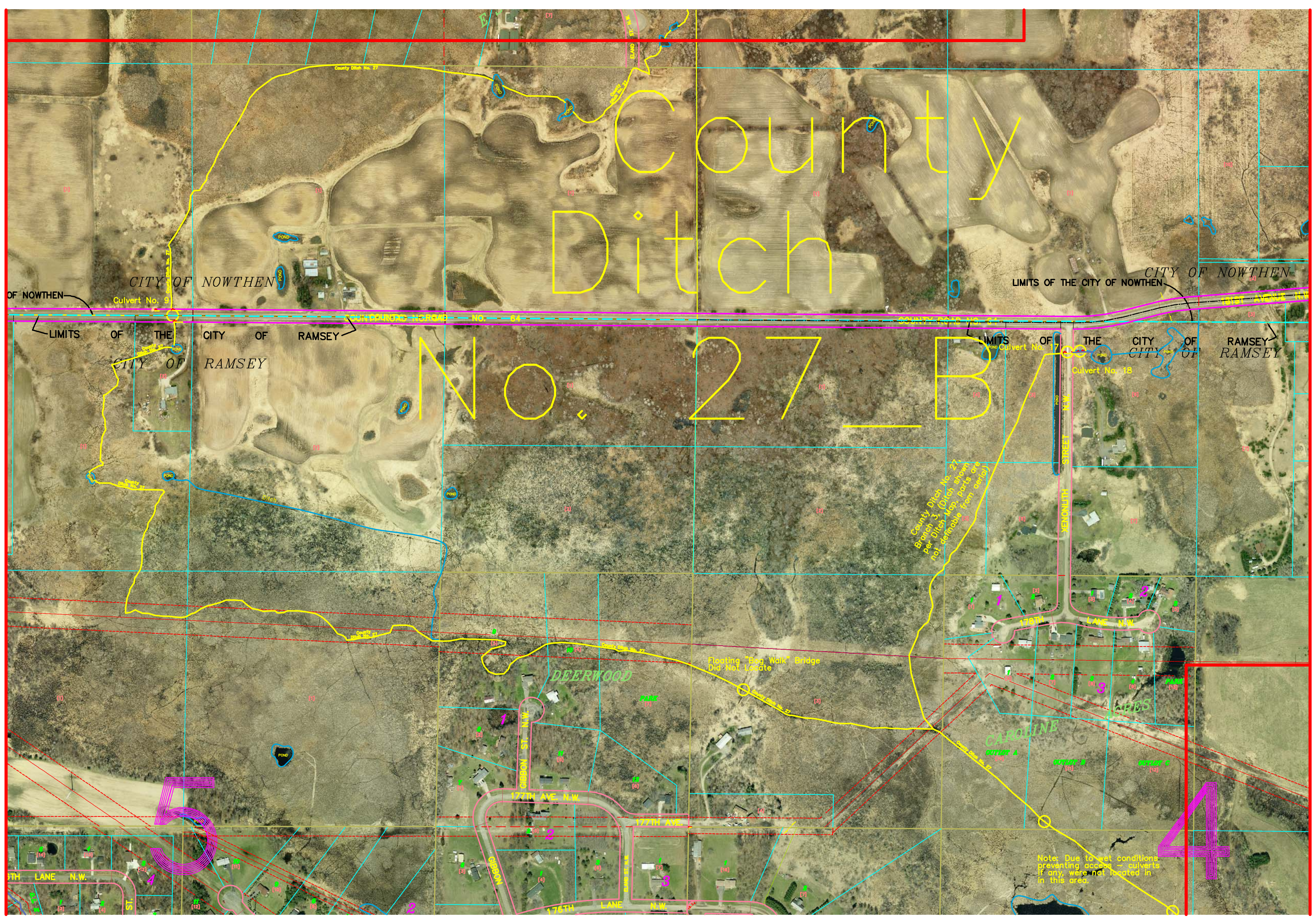
County Ditch No. 27
Branch 3 (Ditch shown
per Ditch Map parts are
not derivable from aerial)

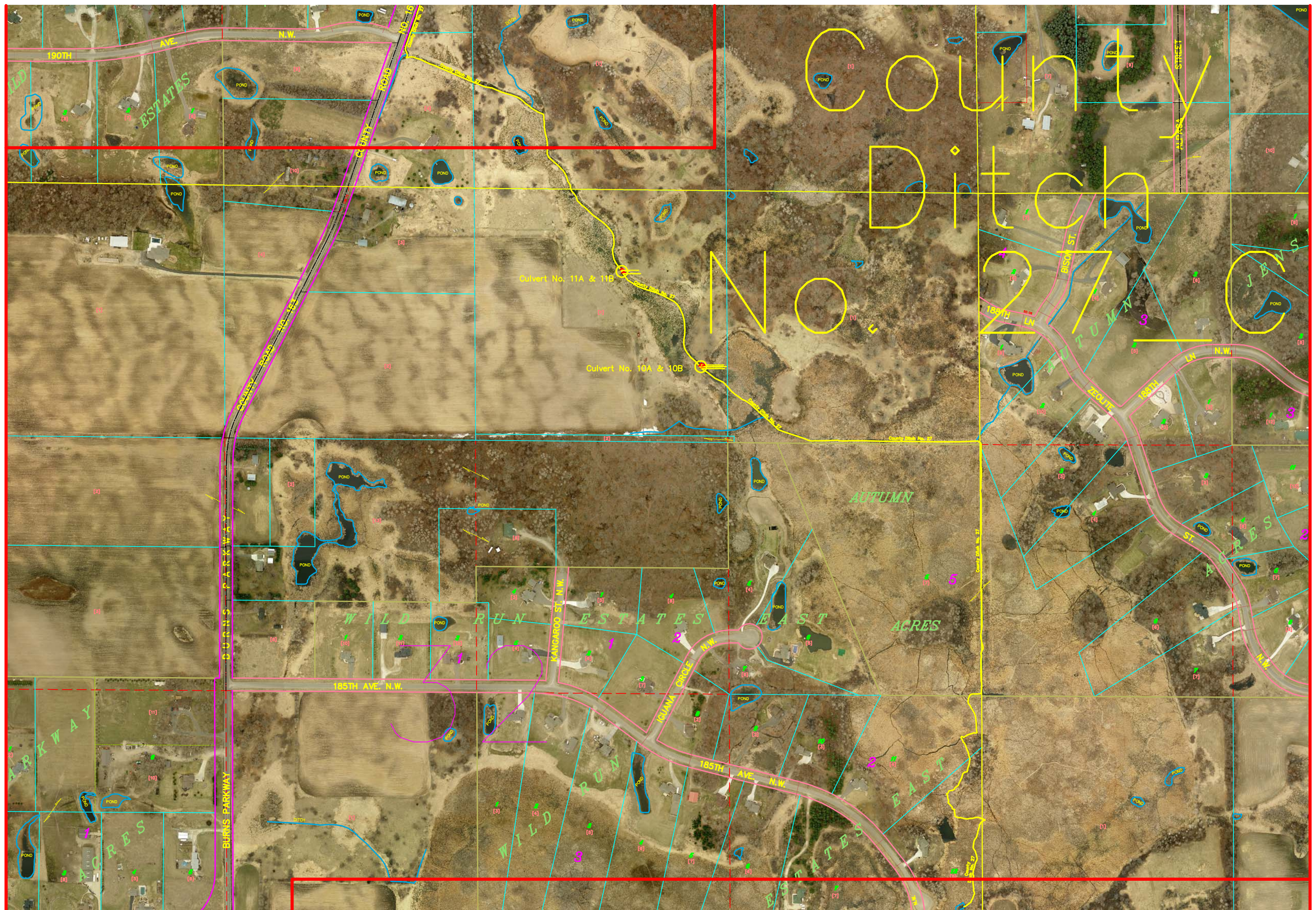
Floating "Bag Walk" Bridge
Did Not Locate

Note: Due to wet conditions
preventing access - culverts
if any, were not located in
this area.

5

4







County Ditch No. 27

COMMERCE

PARK

IGUANA

VIKING BLVD. N.W. COUNTY STATE AID HIGHWAY NO. 22

Culvert No. 14

Culvert No. 15

Culvert No. 16

Culvert No. 13 & 13A

NG. 22

TIGER ST. 2ND

BURNS COUNTRY ESTATES 2ND ADD

VIQUINA ST. WEST ESTATES

190TH AVE. N.W. WILD ESTATES

MARMOSET ST. N.W. 194TH LANE N.W. VIEW

County Ditch No. 27 Branch 2 (Ditch shown per Ditch Map parts are not definable from aerial)

ACRES

County Ditch No. 27 Branch 2 (Ditch shown per Ditch Map parts are not definable from aerial)

PARKWAY

BURNS NOWTHEN

NO 167

Culvert No. 12

190TH