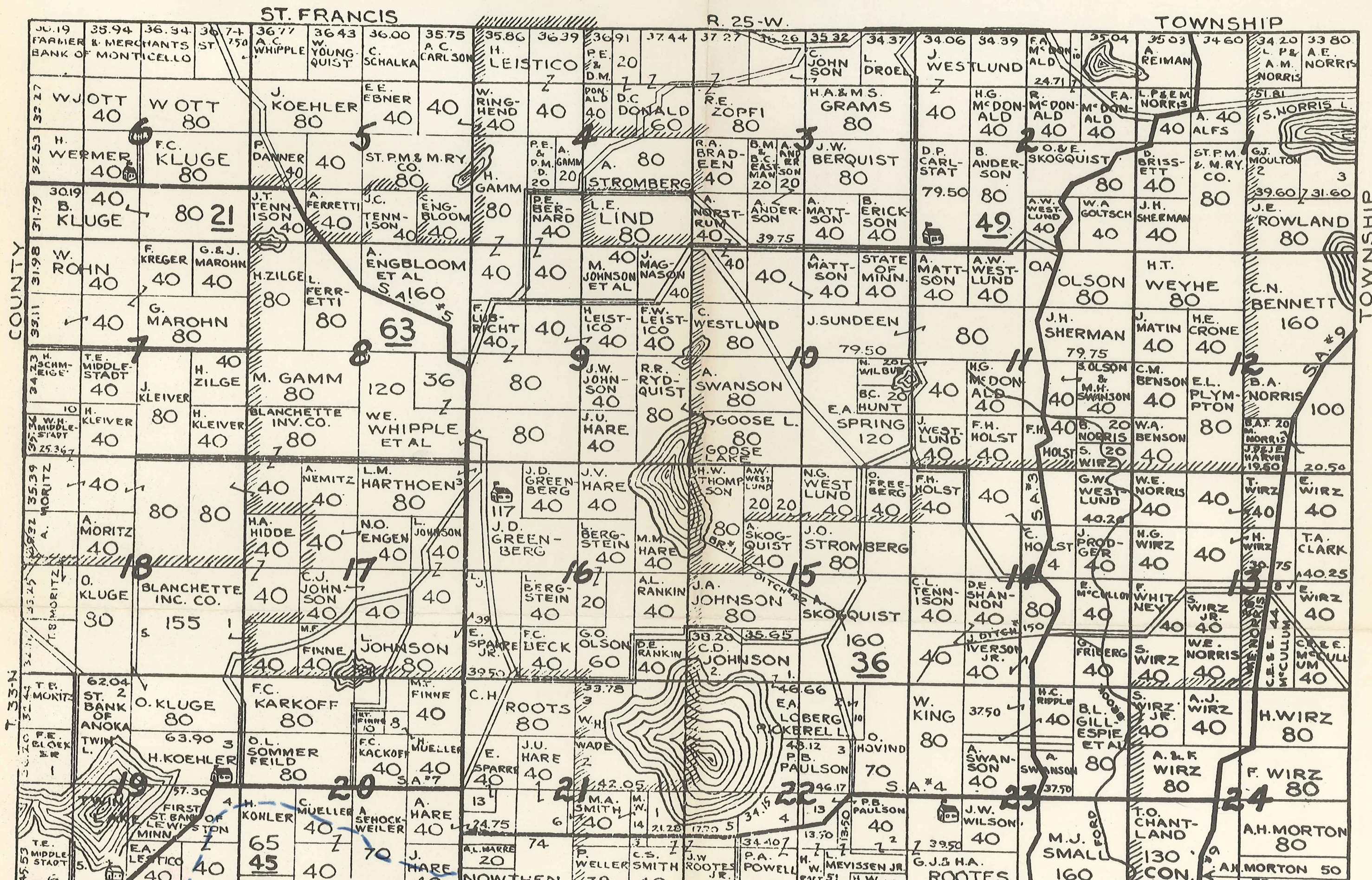
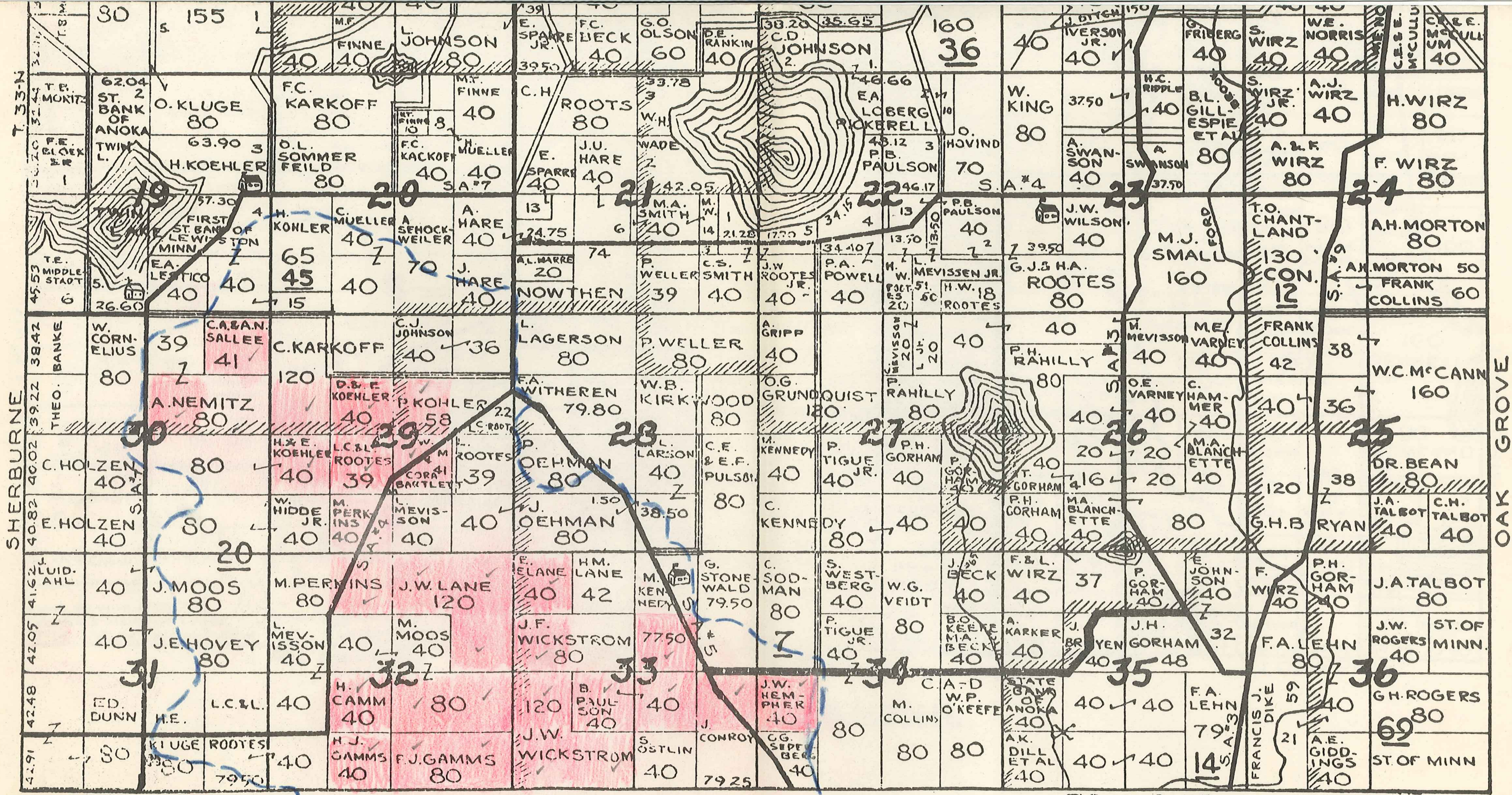


# BURNS TOWNSHIP





T. 33-N  
SHERBURNE

GROVE

RAMSEY

TOWNSHIP

30

155

1

M.F.

L. JOHNSON

E. SPARRE JR.

FC. BECK

GO. OLSON

DE. RANKIN

38.20

35.65

160

36

40

J. DYCKEN JR.

G. FRIBERG

S. WIRZ

WE. NORRIS

40

62.04

O. KLUGE

FC. KARKOFF

M.F. FINNE

C.H. ROOTS

39.50

40

60

40

38.20

35.65

40

40

40

40

40

40

40

40

ST. BANK OF ANOKA

H. KOEHLER

O.L. SOMMER FEILD

FC. KACKOFF

H. MUELLER

E. SPARRE

J.U. HARE

WADE

42.05

40

40

70

80

40

80

40

40

80

80

57.30

H. KOEHLER

C. MUELLER

A. SEHOCK-WEILER

A. HARE

13

24.75

6

740

14

21.28

17.70

5

4

13

40

40

40

40

EA. LESTICO

40

65

40

70

40

74

20

39

40

40

40

40

40

80

160

130

CON. 12

80

26.60

W. CORNELIUS

C.A. SALLEE

C. KARKOFF

C.J. JOHNSON

L. LAGERSON

P. WELLER

A. GRIPP

40

40

40

40

40

40

40

40

40

40

40

38.42

THEO. BANKE

A. NEMITZ

D.S. KOEHLER

P. KOEHLER

F.A. WITHEREN

W.B. KIRKWOOD

O.G. GRUNDQUIST

120

80

80

80

80

40

40

40

40

40

40

40.02

C. HOLZEN

H.E. KOEHLER

L.C. ROOTS

P. OEHMAN

L. LARSON

C.E. & E.F. PULSON

M. KENNEDY

40

40

40

40

40

40

40

40

40

40

40

40.82

E. HOLZEN

W. WIDDE JR.

M. PERKINS

L. MEVISSON

J. OEHMAN

1.50

38.50

80

80

80

80

40

40

40

40

40

40

40

41.62

J. MOOS

M. PERKINS

J.W. LANE

E. ELANE

H.M. LANE

M. KENNEDY

42

79.50

80

80

40

40

40

37

40

40

40

40

42.05

J.E. HOVEY

L. MEVISSON

M. MOOS

J.F. WICKSTROM

77.50

80

80

80

80

80

80

80

40

40

40

40

40

40

42.48

ED. DUNN

L.C. & L.

H. CAMM

80

120

B. PAULSON

40

40

40

80

80

80

80

40

40

40

40

40

42.91

KLUGE

ROOTS

H.J. GAMMS

F.J. GAMMS

J.W. WICKSTROM

79.50

40

40

40

80

80

80

40

40

40

40

40

40