

Profile of Ratchman Sitch  
No. 27 Aucka County

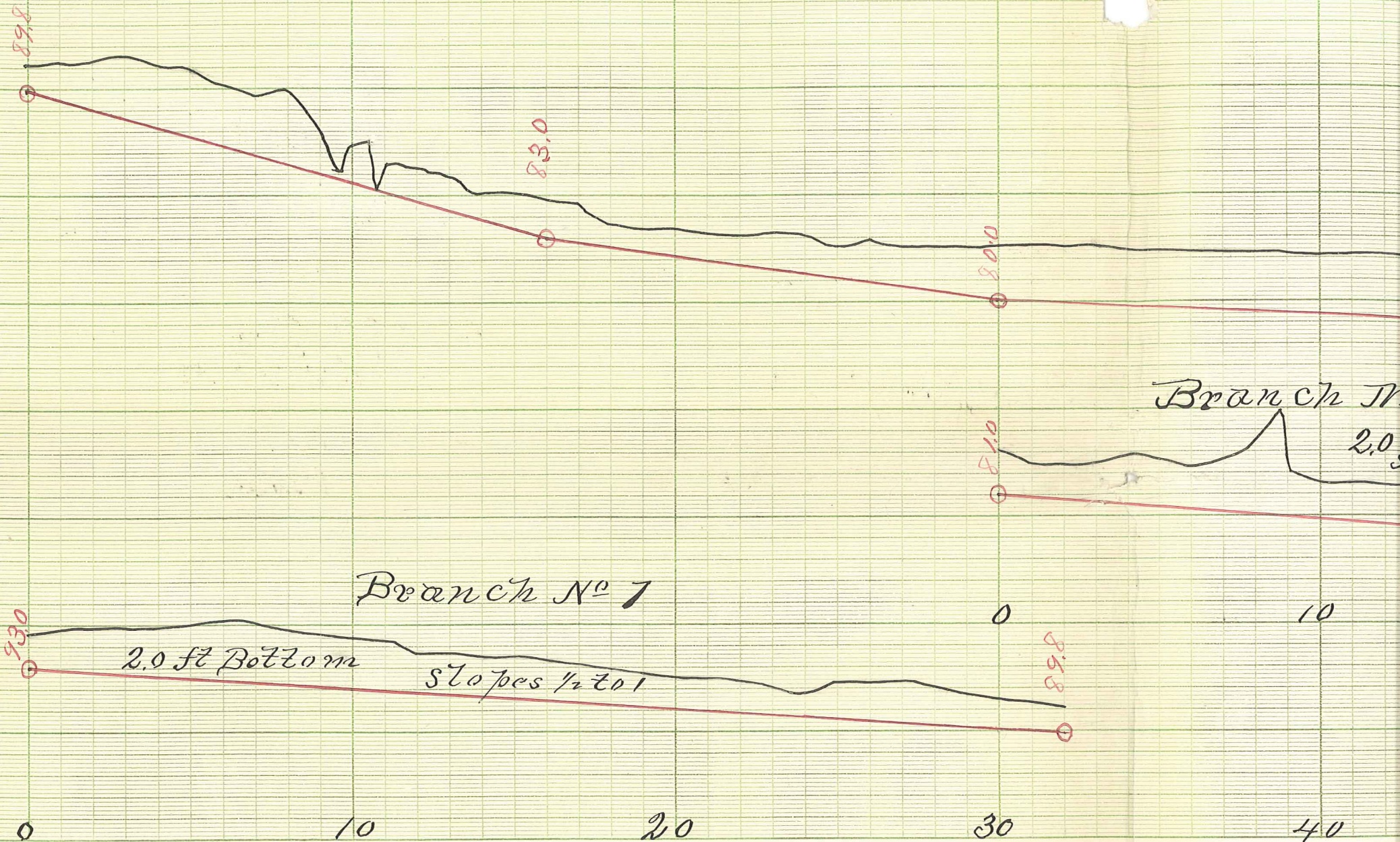
Office of County Auditor  
County of Aucka Minn.  
Filed Dec. 18<sup>th</sup> 1897,  
J. M. Putnam  
County Auditor



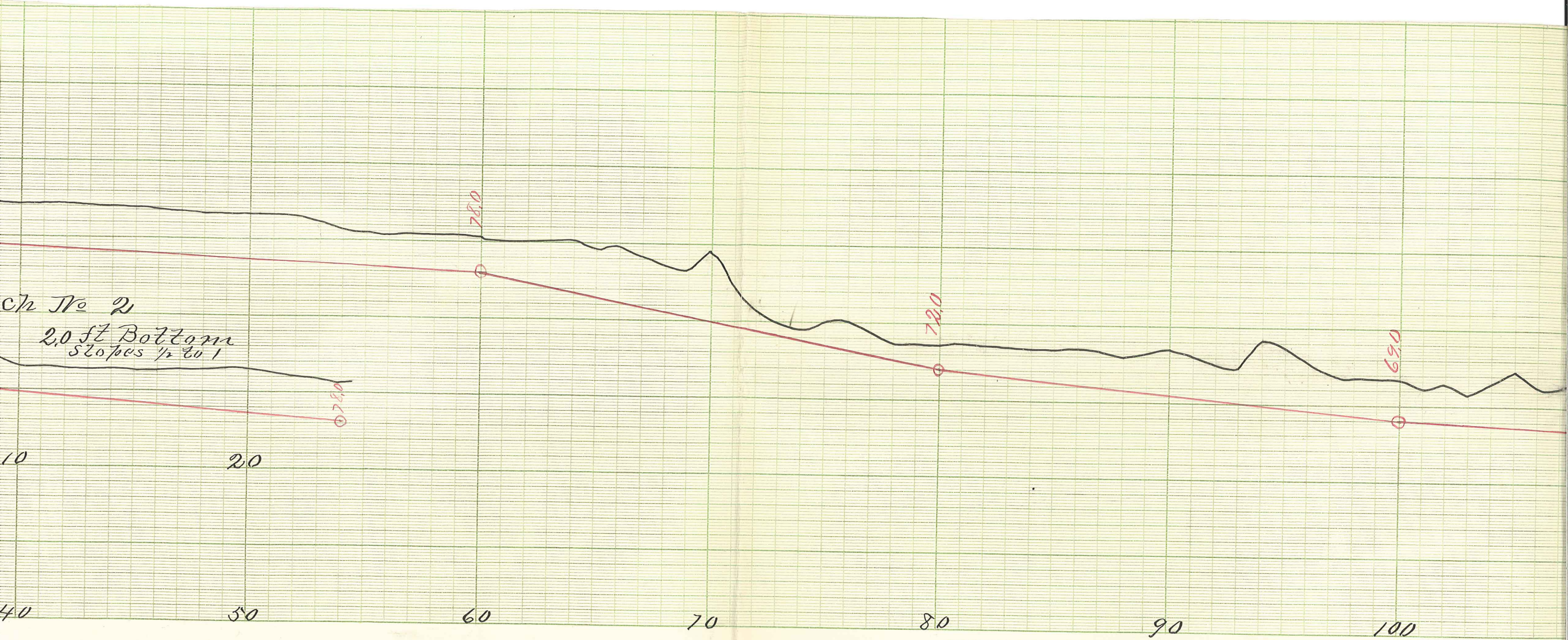
Profile  
of  
Rathburn Ditch  
No

ANDERSON CO  
Minn

Dec 1897  
W.R.G.







STANDARD PROFILE PAPER  
No 263 \* B \* 4 x 30

30  
569



← Bottom  
2.0 ft x 3.0 ft →

Slope  $\frac{3}{4}$  to 1

← Burns





URNS

TOWN LINE

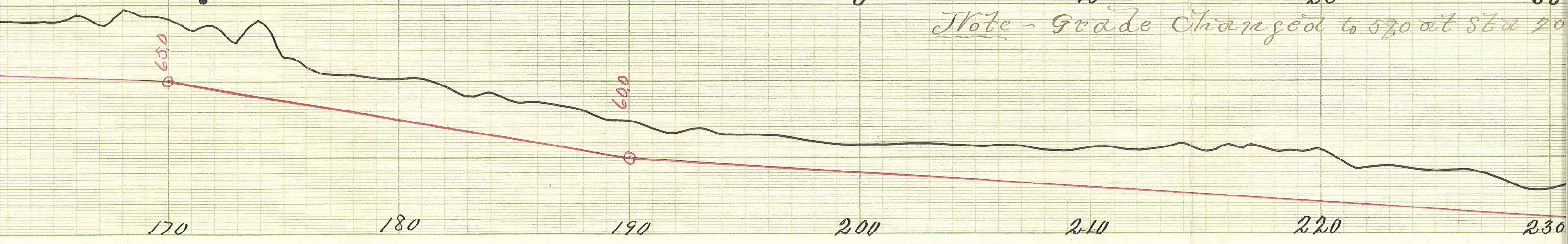
Ramses →

- Duck Lake -

- Branch No 3 -

2.0 ft Bottom Slope 1/2 to 1

Note - Grade Changed to 570 at Sta 20



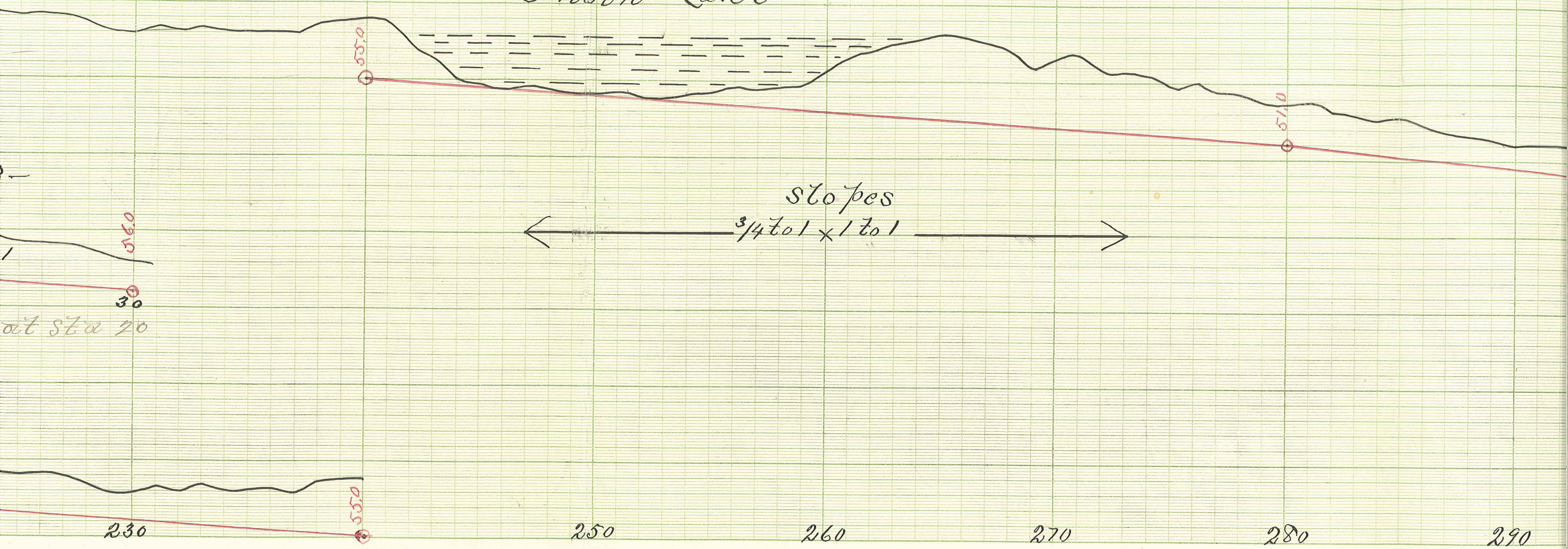
$$\frac{35}{2} = 5.5$$

$$\frac{4.0}{2.0} = 2.0$$

STANDARD PROFILE PAPER  
 N: 263 \* B \* 4 x 30

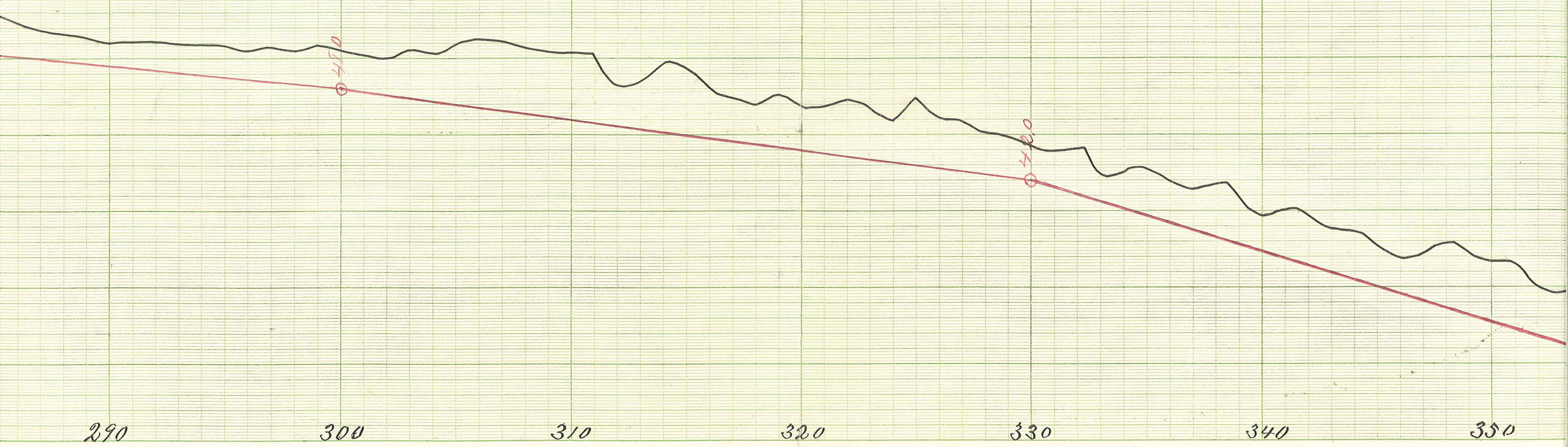


- Thorn Lake -





x Clearing-only - 2 Roots wide



STANDARD PROFILE PAPER  
N: 263 \* B \* 4 X 30



x Clearing-only - 2 Rods wide x

