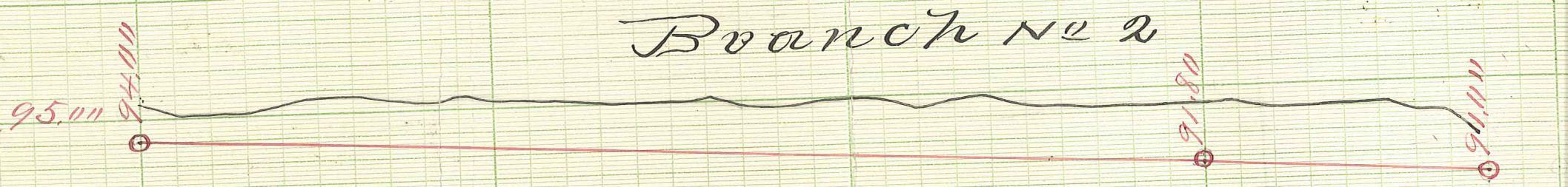
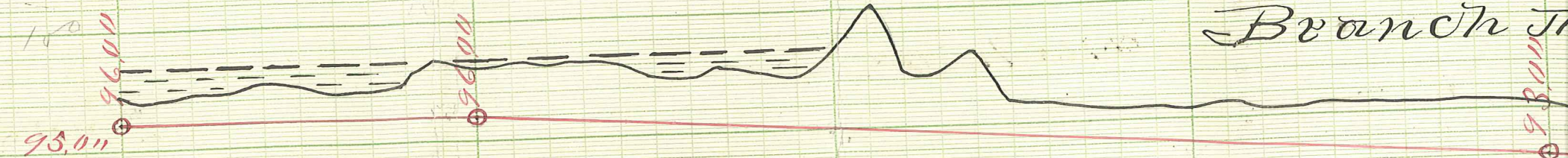
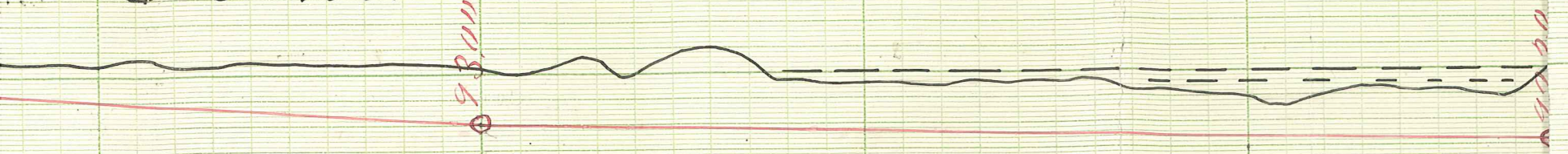


Profiles  
 of  
 Branches  
 To  
 ANDERSON DITCH  
 No. 28  
 ANOKA COUNTY  
 Minn 1898  
 W. R. G.

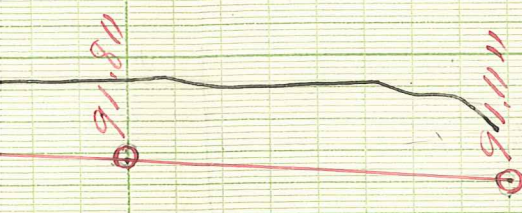


0                      10                      20                      30                      40

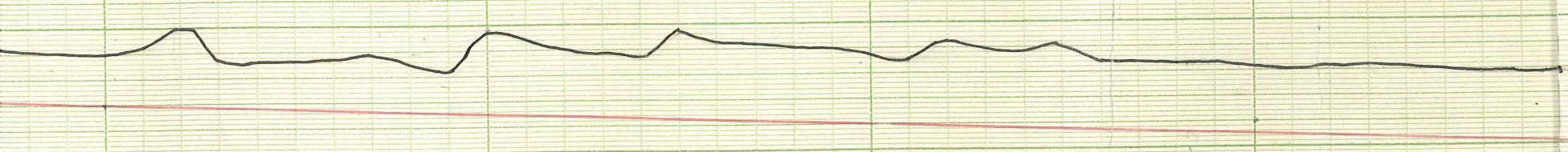
Branch No 1



2

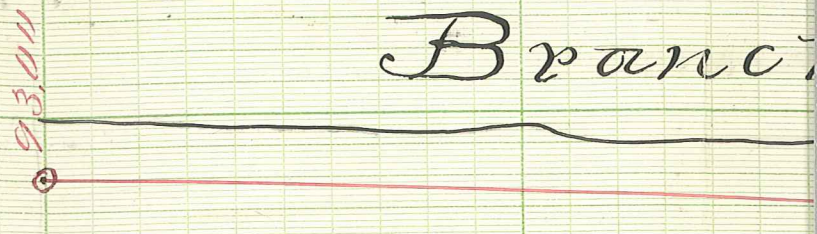


Branch No 3

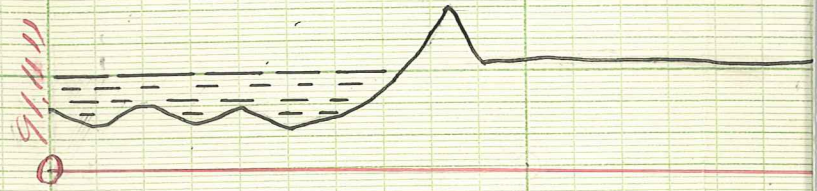


30 40 50 60 70

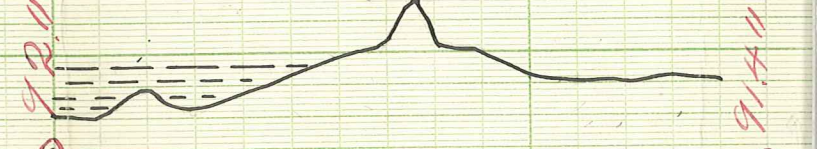
Branch



Branch No



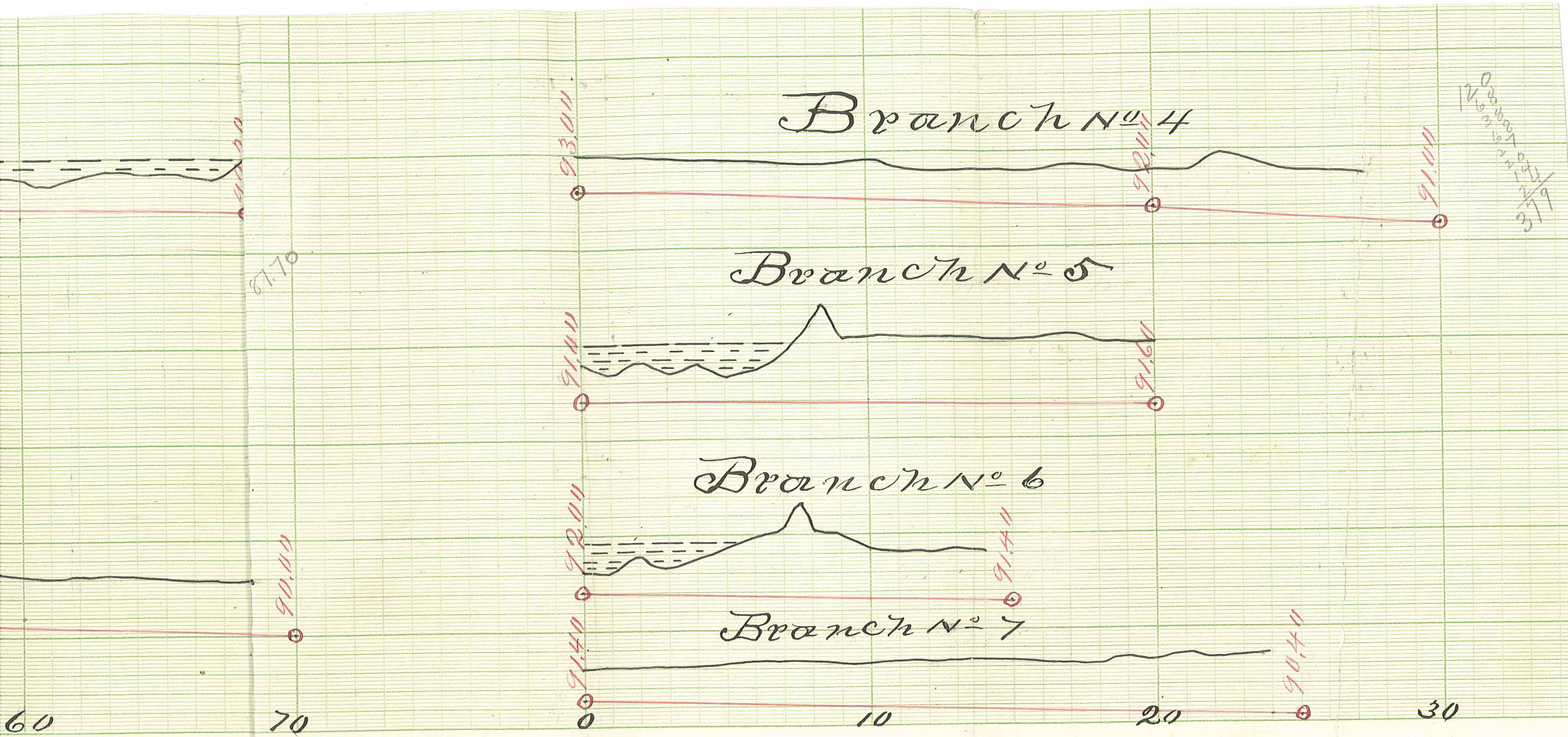
Branch No 6



Branch No 7



0 10



120  
 12000  
 10000  
 20000  
 379

Profile of Branches  
of Anderson Ditch - No. 28.

Filed Feb. 19, 1898.

G. W. Putnam,  
Co. Auditor.

L