

**ANOKA COUNTY**  
**COUNTY DITCH INSPECTION REPORT**

**DITCH # 28**

**DATE: 7/12/94**

**BY: P K Ruud**

**COMMUNITIES: East Bethel, Ham Lake**

**REMARKS:**

Driveway                      Entrance to "Antiques of Meadowmoor". Ditch well defined and flowing. From here north to CSAH # 22, the ditch follows the east ditch of TH 65.

Briarwood                      At this crossing, 1/8 mile east of TH 65, the ditch is well defined and flowing. Considerable sand and gravel have washed off the road into the ditch.

TH #65                              At this north crossing , the ditch is well defined and flowing slowly. Several trees lying across the ditch to the east.

TH # 65                              At this south crossing, the ditch from the east is well defined. A beaver dam exists about 100' east of the r/w line. No apparent flow from the east.

W. Service Rd.                      At this north crossing, the ditch is well defined. No apparent flow.

W. Service Rd.                      At this south crossing, the ditch is defined. No apparent flow.

Briarwood                              At this crossing, about 3/4 mile east of TH 65, the ditch is defined on the south side, but overgrown with brush. No apparent flow.

**ACTIVITIES:**

The east ditch along TH 65, between the two crossings in the NW1/4 Of Section 5, has become the active route of the ditch. This, in reality, replaces the loop that crossed the highway to the west side and then crossed back to the east side.

The County Board, in response to a petition for a ditch repair, ordered an Engineer's report for this ditch in about 1988. See the ditch file for details.

**ANOKA COUNTY**  
**COUNTY DITCH INSPECTION REPORT**

**DITCH # 28 (Cont'd.)**

**DATE: 7/28/94**

**BY: P K Ruud**

**COMMUNITIES: East Bethel, Ham Lake**

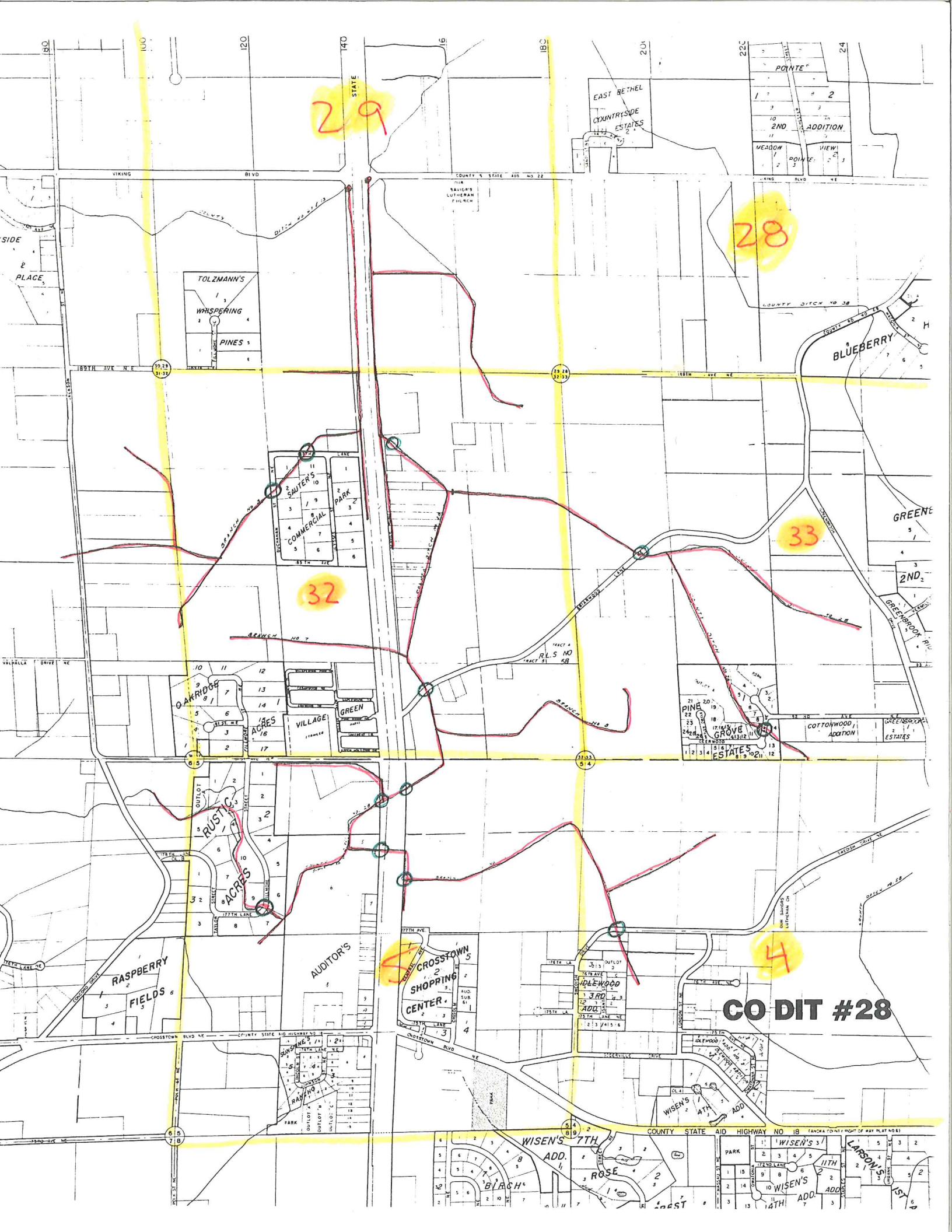
**REMARKS:**

Following a review of the ditch records covering the ditch repair that was done in 1920, the following additional crossings were viewed:

Swedish Drive	Marshy area on both sides of the road. Ditch not defined.
Deerwood Lane	Ditch well defined but overgrown with grass away from the street. No apparent flow.
187th Lane	Ditch defined and flowing.
Buchanan Street	Ditch defined and flowing.
Fillmore Street	Ditch defined and clear of brush. No apparent flow.

**ACTIVITIES:**

As a part of the designation of the ditch system at the time of the 1920 repair, the ditches on both the east and west sides of TH 65 became parts of the Ditch 28 system.



29

28

32

33

4

CO DIT #28

TOLZMANN'S  
WHISPERING  
PINES

SAUTER'S  
PARK  
COMMERCIAL

OAKRIDGE  
ACRES  
VILLAGE  
GREEN

AUSTIN  
ACRES

RASPBERRY  
FIELDS

AUDITOR'S  
CROSSTOWN  
SHOPPING  
CENTER

WISSEN'S  
ADD.

WISSEN'S  
ADD.  
ROSE  
BIRCH

WISSEN'S  
ADD.  
11TH  
14TH

LARSON'S  
1ST

EAST BETHEL  
COUNTRYSIDE  
ESTATES

POINTE  
2ND  
ADDITION  
MEADOW  
VIEW

BLUEBERRY

GREENE

2ND

GREENBROOK  
PARK

PINE  
GROVE  
ESTATES

COTTONWOOD  
ADDITION  
GREENBROOK  
ESTATES

WISSEN'S  
ADD.

LARSON'S  
1ST

COUNTY STATE AID HIGHWAY NO 18 (UNDER COUNTY RIGHT OF WAY PLAT 408)