

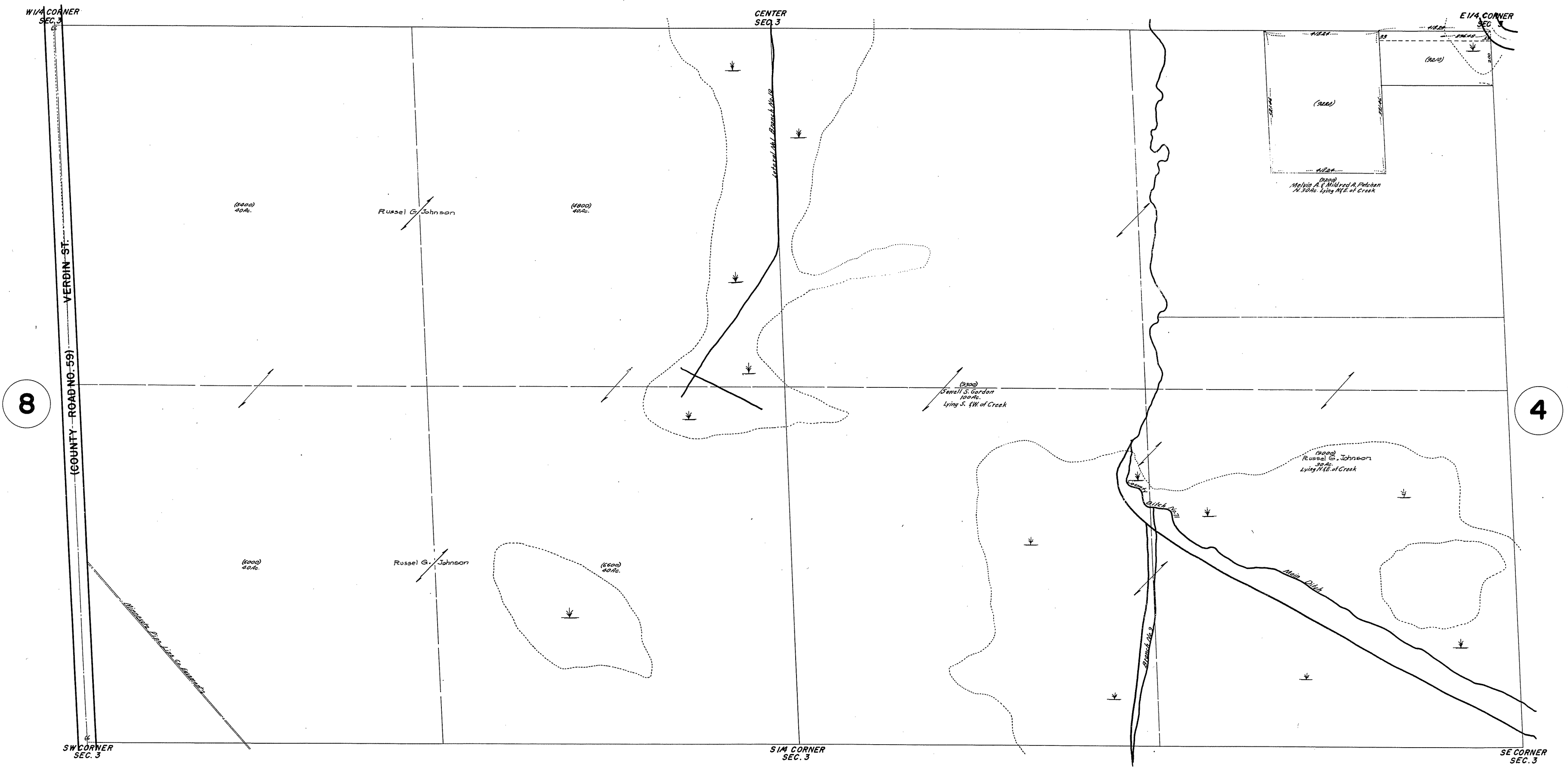
S 1/2 SEC. 3, T. 32, R. 24

TOWNSHIP OF GROW

THIS IS A COMPILATION OF RECORDS AS THEY APPEAR IN THE ANOKA COUNTY OFFICES AFFECTING THE AREA SHOWN. THIS DRAWING IS TO BE USED ONLY FOR REFERENCE PURPOSES AND THE COUNTY IS NOT RESPONSIBLE FOR ANY INACCURACIES HEREIN CONTAINED.

65903

5



8

4

19

ROLAND W. ANDERSON
COUNTY SURVEYOR
ANOKA COUNTY, MINNESOTA

Rev. 2-7-70
Rev. 3-25-77
Rev. 3-24-84
Revisions 2-17-84