

N 1/2 SEC. 12, T. 32, R. 22

TOWNSHIP OF COLUMBUS

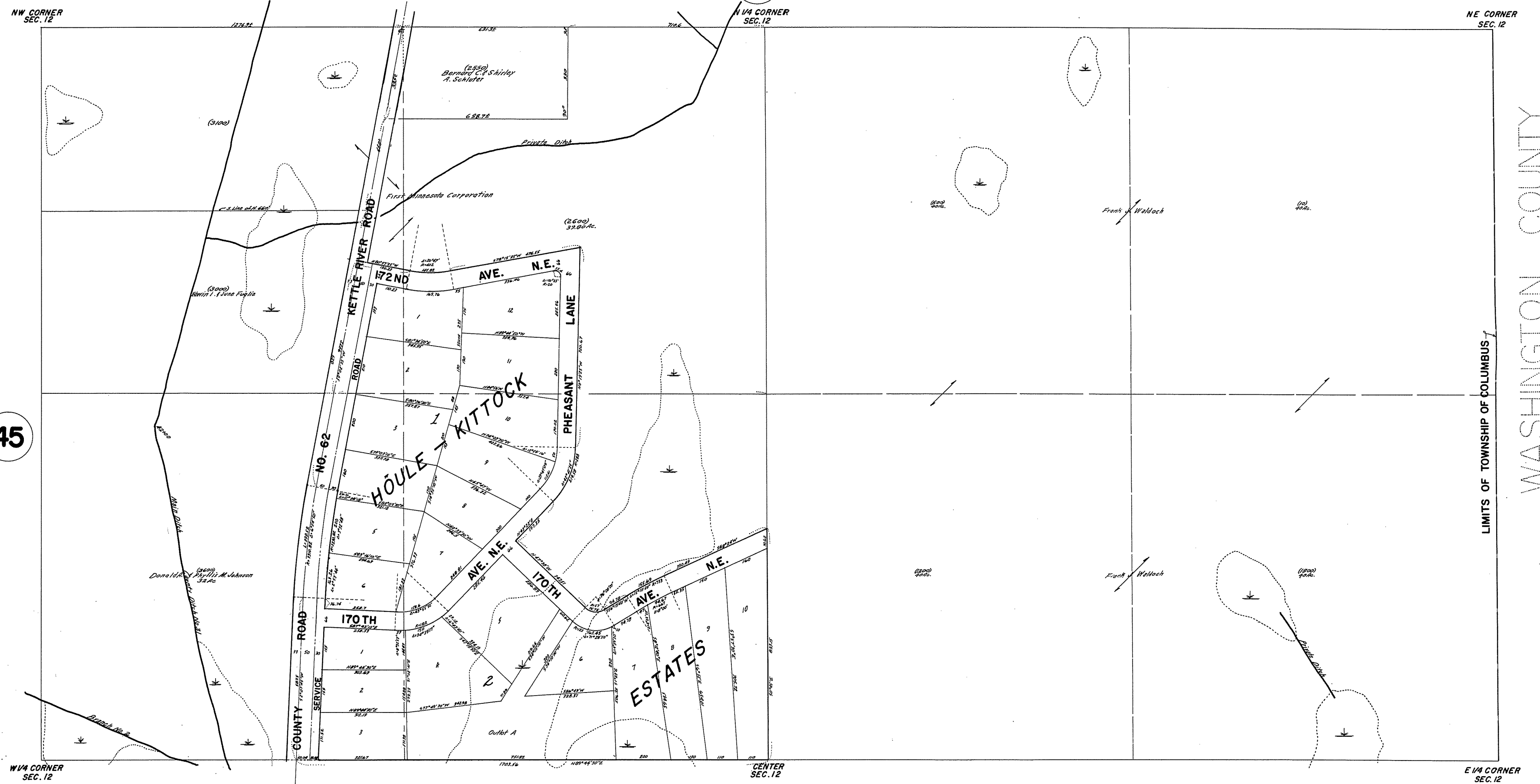
THIS IS A COMPILATION OF RECORDS AS THEY APPEAR IN THE ANOKA COUNTY OFFICES AFFECTING THE AREA SHOWN. THIS DRAWING IS TO BE USED ONLY FOR REFERENCE PURPOSES AND THE COUNTY IS NOT RESPONSIBLE FOR ANY INACCURACIES HEREIN CONTAINED.

38712

26

45

48



LIMITS OF TOWNSHIP OF COLUMBUS
WASHINGTON COUNTY

ROLAND W. ANDERSON
COUNTY SURVEYOR
ANOKA COUNTY, MINNESOTA

Rev. 1-11-60P
Rev. 2-23-67
Rev. 5-4-68
G.T. 12-30-69