

N 1/2 SEC. 25 T.31 R.23

CITY OF CIRCLE PINES

THIS IS A COMPILATION OF RECORDS AS THEY APPEAR IN THE ANOKA COUNTY OFFICES AFFECTING THE AREA SHOWN. THIS DRAWING IS TO BE USED ONLY FOR REFERENCE PURPOSES AND THE COUNTY IS NOT RESPONSIBLE FOR ANY INACCURACIES HEREIN CONTAINED.

29525

48

N 1/4 CORNER SEC. 25

VILLAGE OF

OF

CIRCLE

PINES

N.E. CORNER SEC. 25

N.W. CORNER SEC. 25

CORPORATE LIMITS

OF

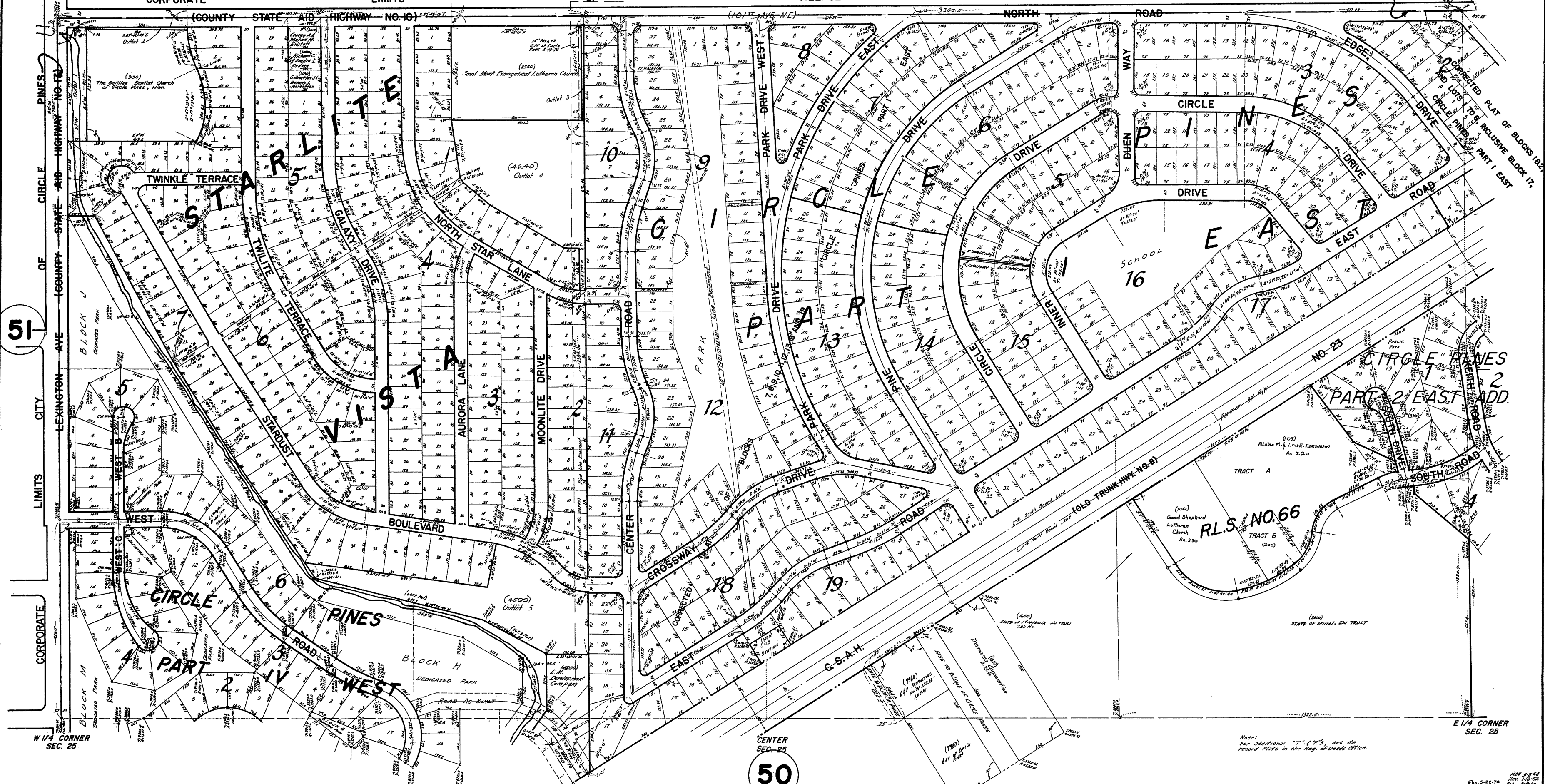
OF

VILLAGE OF

OF

CIRCLE

PINES



51

50

W 1/4 CORNER SEC. 25

CENTER SEC. 25

E 1/4 CORNER SEC. 25

Note: For additional T.31 R.23, see the record plat in the Reg. of Deeds Office.

REV. 5-21-70
REV. 2-24-67
REV. 2-20-65
REV. 8-3-63
REV. 1-10-63
REV. 5-1-60
REV. 2-1-59
REV. 2-20-55
REV. 5-24-51