

N 1/2 SEC. 31, T. 32, R. 22

TOWNSHIP OF COLUMBUS

THIS IS A COMPILATION OF RECORDS AS THEY APPEAR IN THE ANOKA COUNTY OFFICES AFFECTING THE AREA SHOWN. THIS DRAWING IS TO BE USED ONLY FOR REFERENCE PURPOSES AND THE COUNTY IS NOT RESPONSIBLE FOR ANY INACCURACIES HEREIN CONTAINED.

38731

84

87

86

NW CORNER SEC. 31

N 1/4 CORNER SEC. 31

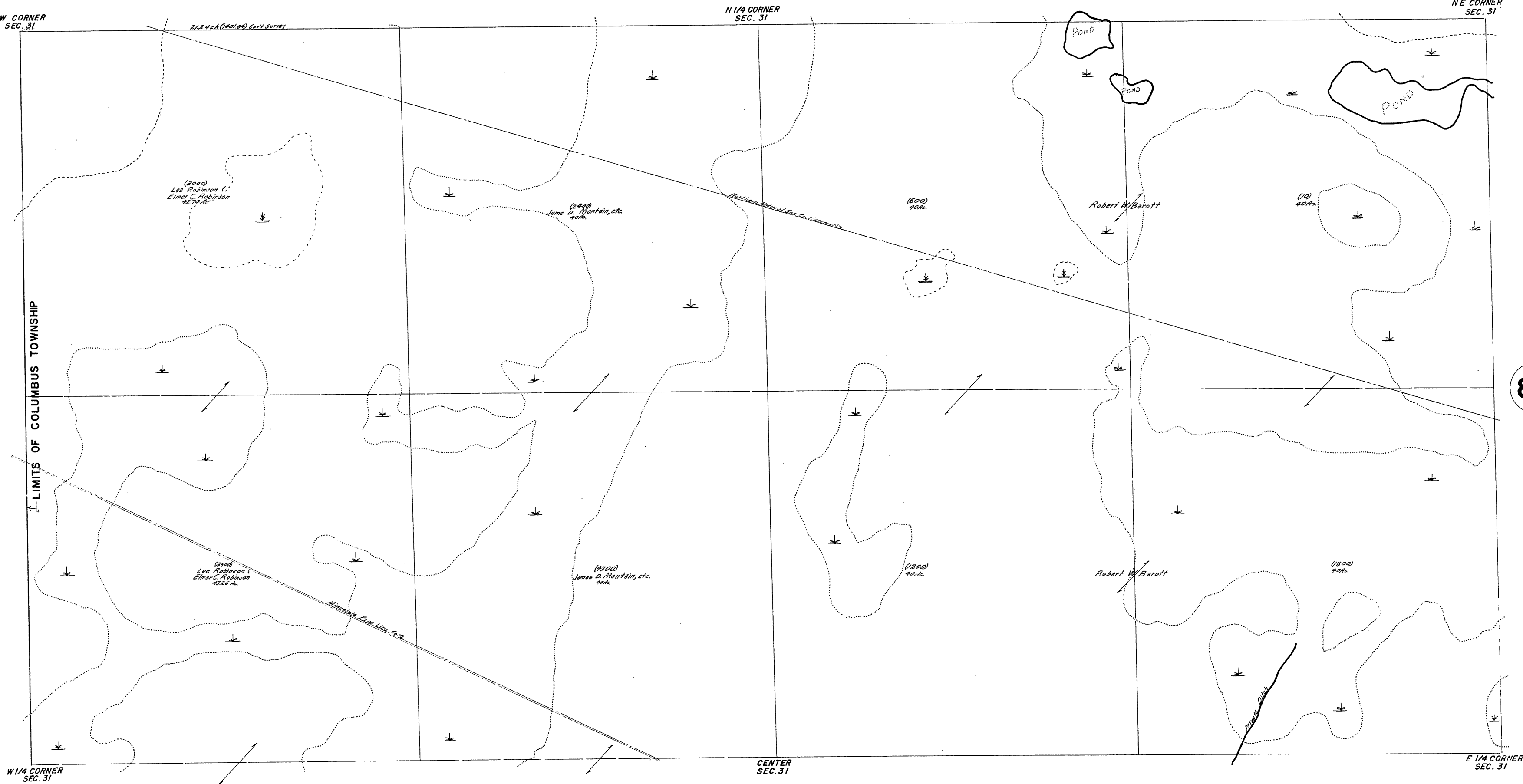
NE CORNER SEC. 31

LIMITS OF COLUMBUS TOWNSHIP

W 1/4 CORNER SEC. 31

CENTER SEC. 31

E 1/4 CORNER SEC. 31



ROLAND W. ANDERSON
COUNTY SURVEYOR
ANOKA COUNTY, MINNESOTA

REV. 8-17-70
REV. 3-9-67
REV. 5-19-60
6.7.10-30-62