

S 1/2 SEC. 36, T. 32, R. 23

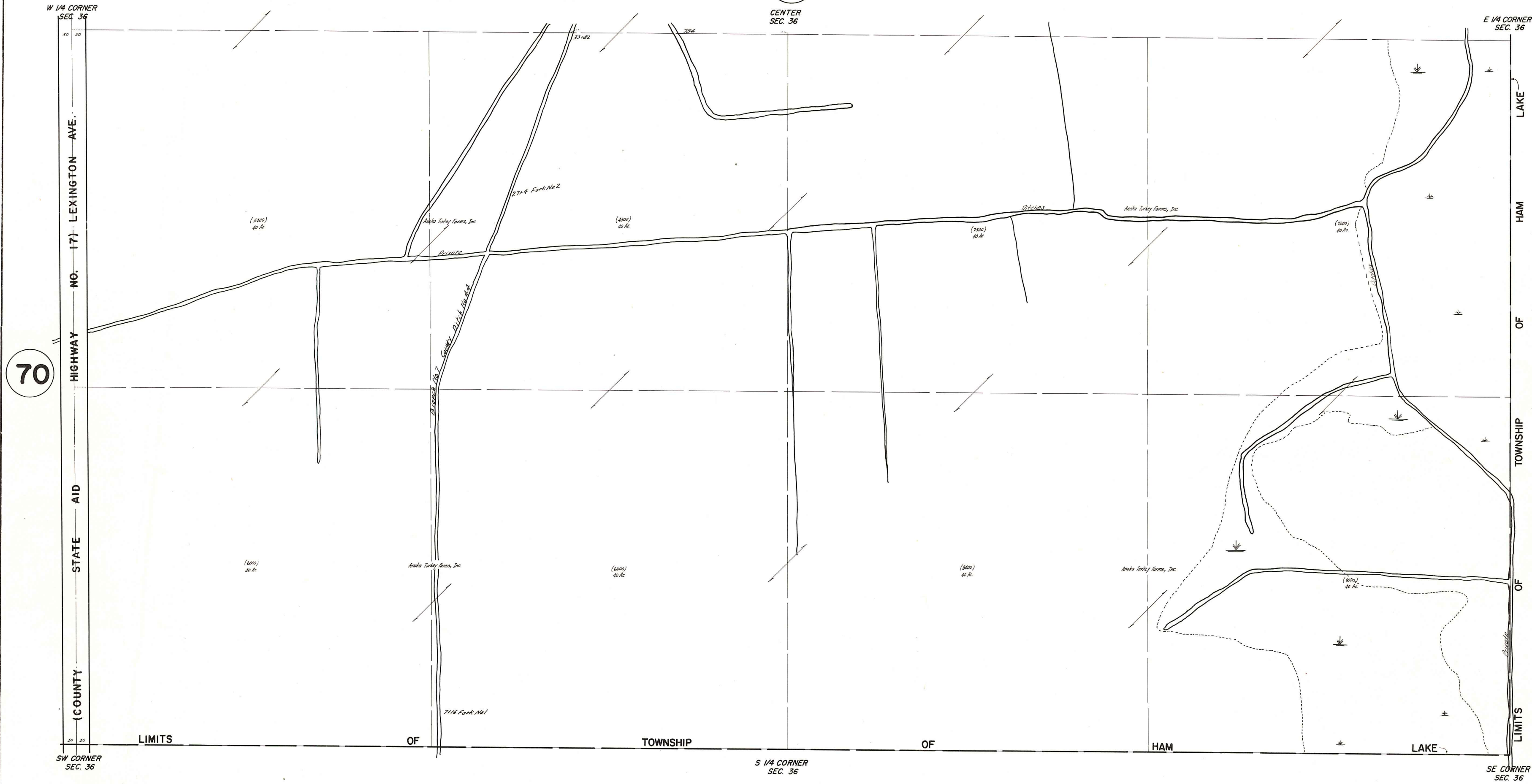
TOWNSHIP OF HAM LAKE

THIS IS A COMPILATION OF RECORDS AS THEY APPEAR IN THE ANOKA COUNTY OFFICES AFFECTING THE AREA SHOWN. THIS DRAWING IS TO BE USED ONLY FOR REFERENCE PURPOSES AND THE COUNTY IS NOT RESPONSIBLE FOR ANY INACCURACIES HEREIN CONTAINED.

73036

71

CENTER SEC. 36



70

W 1/4 CORNER SEC. 36
STATE AID
HIGHWAY NO. 17 LEXINGTON AVE.
(COUNTY)

E 1/4 CORNER SEC. 36
LAKE
HAM
OF
TOWNSHIP
OF
LIMITS

LIMITS OF TOWNSHIP OF HAM LAKE

SW CORNER SEC. 36

S 1/4 CORNER SEC. 36

SE CORNER SEC. 36

REV. 7-22-70
REV. 11-17-70
REV. 8-16-83
REV. 7-17-81
REV. 10-28-83