

ANOKA COUNTY
COUNTY DITCH INSPECTION REPORT

DITCH # 35

DATE: 7/8/94

BY: P K Ruud

COMMUNITIES: Columbus

REMARKS:

181st Ave	Ditch defined on the south side of the road, overgrown on the north side. No apparent flow.
Xingu St	Ditch overgrown, no visible flow.
179th Ave	Ditch overgrown, no visible flow.
Ussuri St	Ditch defined and flowing to the east. (This street is identified as Ural St on the map.)
MacKenzie St	Ponds dug on both sides of the road. Flow to the east.
CSAH # 18	Well defined wide ditch. Flow to the north.
D N R Road	Clear ditch, with overflow structure on the west side of the road. Good flow to the east. Pool Elevation on west side-7.00' (Gage Reading.)

ACTIVITIES:

AREA

POND

POND

POND

POND

AVENUE

#35

#35

#35

#35

#35

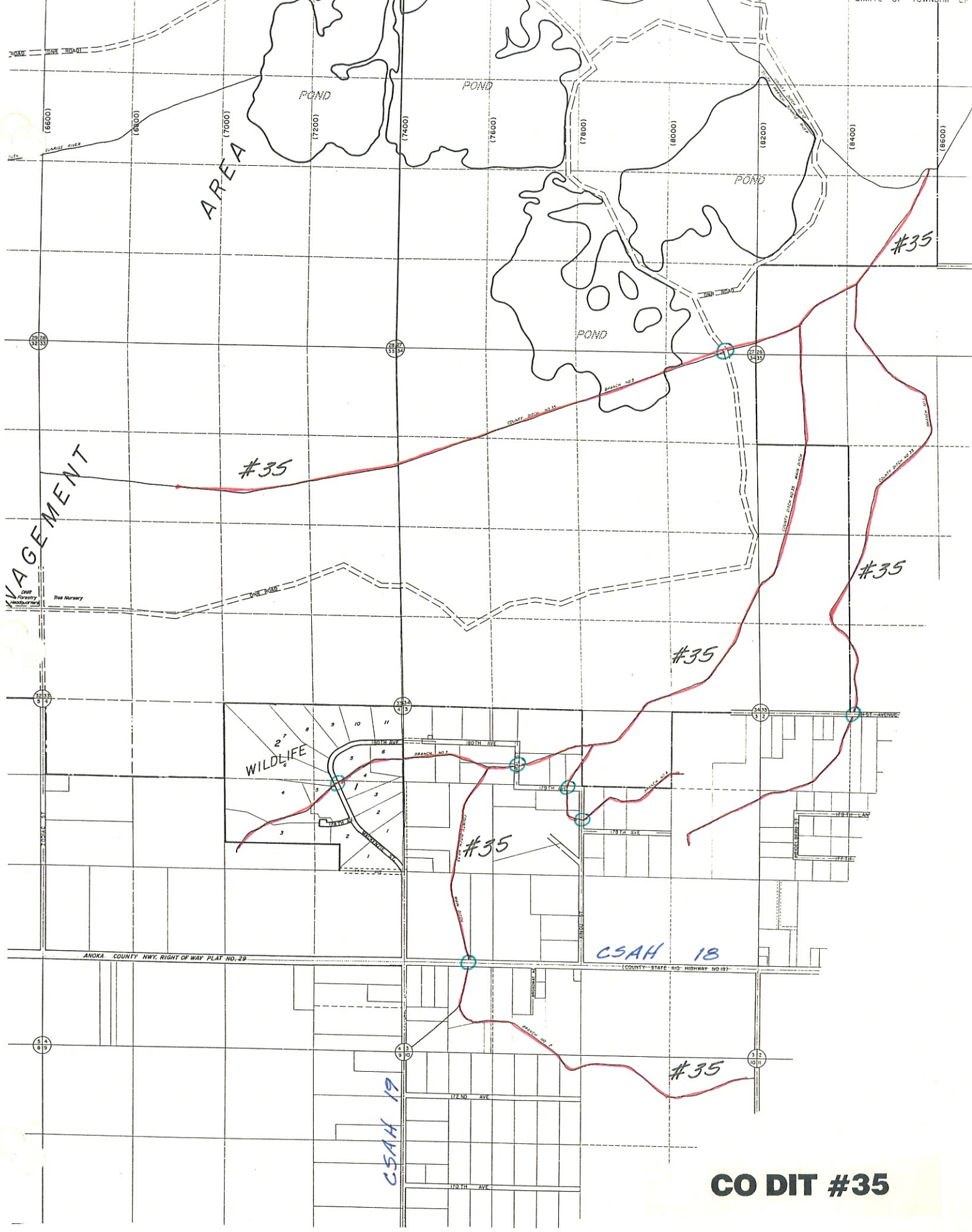
#35

WILDLIFE

CSAH 18

CSAH 19

CO DIT #35



#35

7/8/94

PKR

181 ~~St~~ Ave.

Ditch defined on south side,
grown over on north side.
No visible flow.

Xingu St.

Ditch grown over, no flow
visible.

179th

"

"

Ussuri St.

Ditch defined & flowing to
east.

Mackenzie St.

Ponds dug on both side
of road. Flow to east.

#18

Well defined, wide ditch. Flow
to north.

DNR Rd.

Clear ditch, overflow structure
at west side of road. Good
flow. (Pool Elev. ^(Gage) West Side 7.00)

PUBLIC DRAINAGE DITCH INVENTORY FORM
(Laws of 1990, Chapter 601, Section 27)

1. Drainage authority name: Anoka County (Columbus)
2. Drainage ditch name and number: #35
3. Ditch location and drainage area boundary: (shown on attached quadrangle map)
4. Drainage area in acres: 3177.1 ; Benefitted area in acres: 2005
5. Approximate length in miles: Open Ditch 8.81 Buried Tile 0
6. Year constructed: 1899 ; Original cost: \$ 2400.76
7. Are original plans on file? Yes No ; Location: Anoka County Courthouse
8. Date of original plans: 1899
9. Are "as built" plans on file? Yes No ; Location: _____
10. Year(s) improved: None
11. Are improvement plans on file? Yes No N/A ; Location: _____
12. Year(s) repaired: 1918
13. Are repair plans on file? Yes No ; Location: Anoka County Courthouse
14. If the ditch was transferred from a county or joint county ditch authority to a watershed district or WMO, is the transfer order on file? Yes No NA
15. Is the list of lands benefitted and damaged on file? Yes No
16. Have the benefits and damages been redetermined? Yes No ; If yes, year(s) of redetermination: _____
17. Has right-of-way been acquired for a 1-rod permanent grassed strip? Yes No ; If yes, has it been maintained? Yes No N/A
18. Is there a maintenance fund for the ditch? Yes No ; If yes, current balance in maintenance fund: \$ _____
19. What was the last year maintenance work was performed by drainage authority:
unknown

20. Have other local units or private parties performed maintenance work on the ditch?
Yes No ; List parties: Some work done by DNR in Carlos Avery

21. Have the alignment, grade, bottom width, or bridge or culvert crossings been materially changed from the original or improved construction, without going through formal ditch proceedings? Yes No

22. Is the ditch inspected annually ; every 2-5 years ; every 5-10 years; only when a problem arises ; or never ? Year of last inspection: unknown

23. Approximate percentage of the ditch's contributing drainage area that is currently urbanized: 10 % ; rural: 90 %

24. Have any substantial areas of wetlands originally totally drained by the ditch reestablished themselves due to lack of ditch maintenance? Yes No

25. What is the general condition of the ditch?

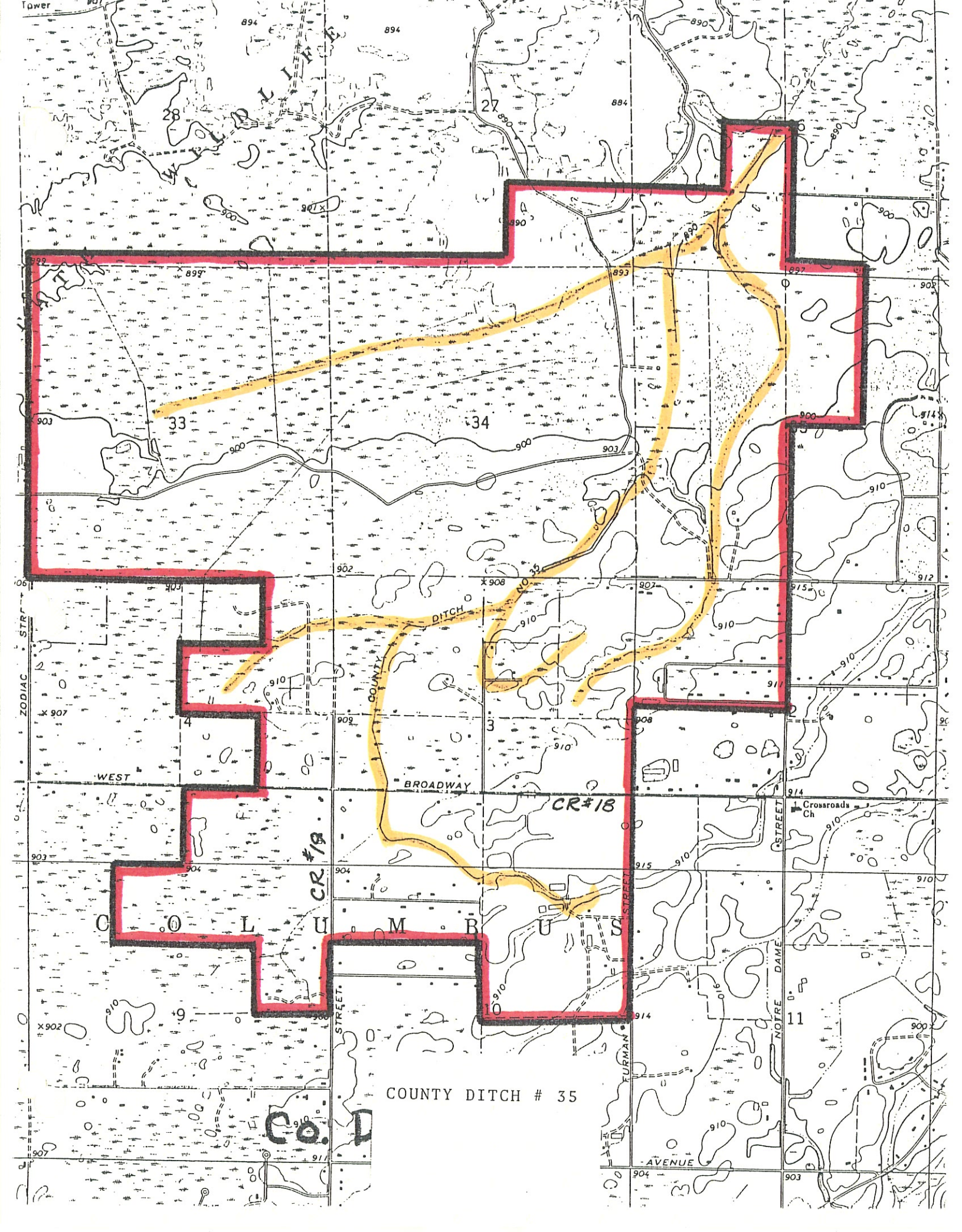
- a. well-maintained
- b. fairly well-maintained
- c. poorly maintained
- d. very poorly maintained
- e. functionally abandoned

26. Describe the existing condition of the ditch, including erosion/sedimentation problems:
Main ditch drains quite well. Some of the branches particularly in the game farm are weed & brush covered.

27. Does the ditch continue to serve a useful purpose to one or more properties? Yes
No ; Estimated acres of agricultural land currently benefitting: 600

28. What plans are there for future management of the ditch? A. Monitor the ditch for problems that occur, such as deadfalls, unapproved culverts/crossings, or filling, that block or impede the normal flow. B. Review, with municipalities & the WMO's, the impact of new development on the drainage system. C. Monitor & repair/replace drainage structures at county highwa crossed by the ditch.

29. Additional comments or recommendations for statutory changes: _____
A. Need legislation that allows for maintenance of the county ditch syste.
B. Need changes in county ditch legislation that provides for a method (s of assessing property within a drainage area to pay for approved repairs or improvements.



COUNTY DITCH # 35

CR #18

Co. D

STREET

STREET

STREET

NOTRE DAME

AVENUE

WEST

BROADWAY

DITCH

COUNTY

ZODIAC STREET

Lower

902

902

902

902

902

902

902

902

902

902

902

902

902

902

902

902

902

902

902

902

902

902

902

902

902

902

902

902

902

902

902

902

902

902

902

902

902

902

902

902

902

907

907

907

907

907

907

907

907

907

907

907

907

907

907

907

907

907

907

907

907

907

907

907

907

907

907

907

907

907

907

907

907

907

907

907

907

907

907

907

907

907

907

907

907

907

907

907

907

907

907

907

907

907

907

907

907

907

907

907

907

907

907

907

907

907

907

907

907

907

907

907

907

907

907

907

907

907

907

907

907

907

907

907

907

907

907

907

907

907

907

907

907

907

907

907

907

907

907

907

907

907

907

907

907

907

907

907

907

907

907

907

907

907

907

907

907

907

907

907

907

907

907

907

907

907

907

907

907

907

907

907

907

907

907

907

907

907

907

907

907

907

907

907

907

907

907

907

907

907

907

907

907

907

907

907

907

907

907

907

907

907

907

907

907

907

907

907

907

907

907

907

907

907

907

907

907

907

907

907

907

907

907

907

907

907

907

907

907

907

907

907

907

907

907

907

907

907

907

907

907

907

907

907

907

907

907

907

907

907

907

907

907

907

907

907

907

907

907

907

907

907

907

907

907

907

907

907

907

907

907

907

907

907

907

907

907

907

907

907

907

907

907

907

907

907

907

907

907

907

907

907

907

907

907

907

907

907

907

907

907

907

907

907

907

907

907

907

907

907

907

907

907

907

907

907

907

907

907

907

907

907

907

907

907

907

907

907

907