

ANOKA COUNTY
COUNTY DITCH INSPECTION REPORT

DITCH # 35

DATE: 7/8/94

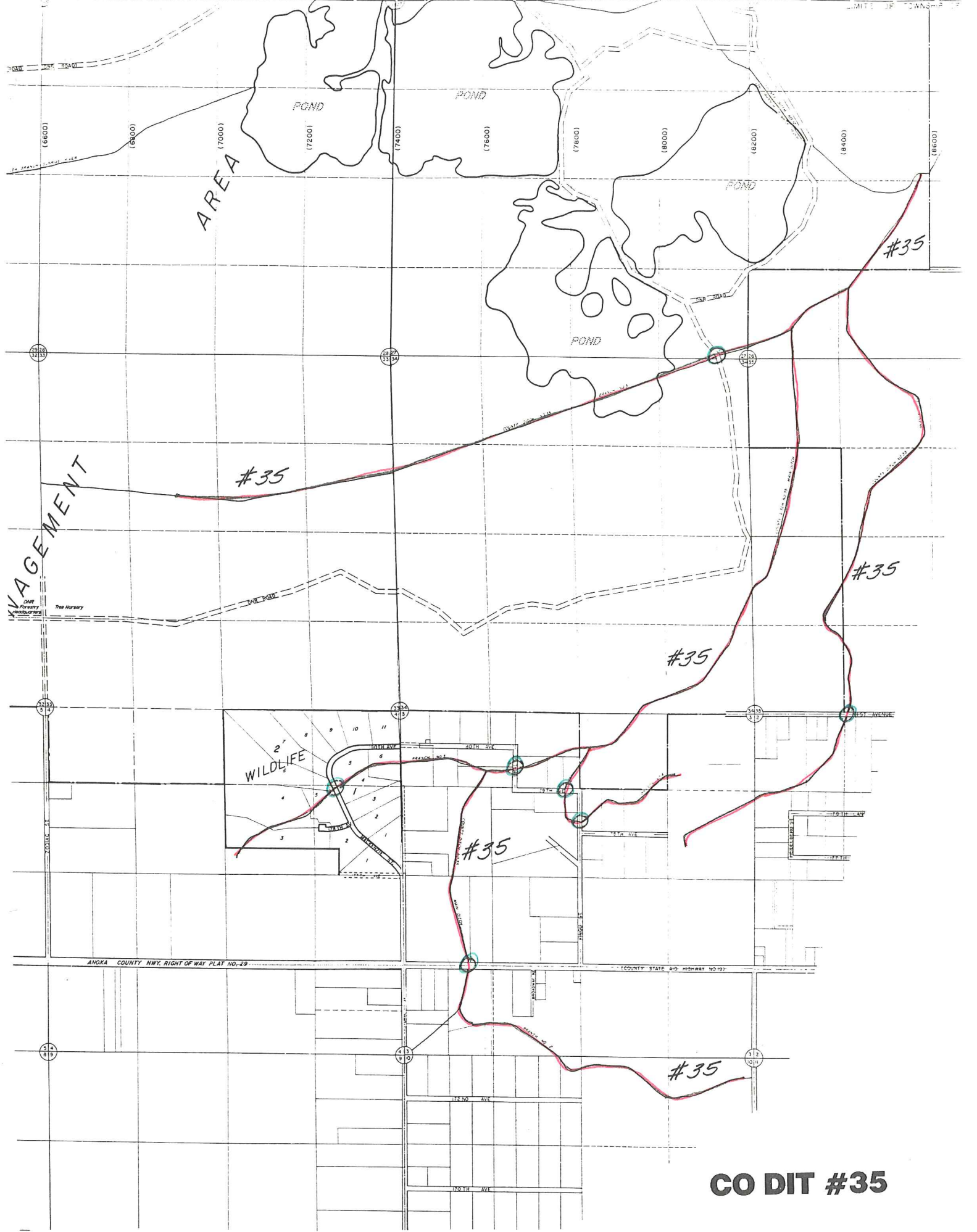
BY: P K Ruud

COMMUNITIES: Columbus

REMARKS:

181st Ave	Ditch defined on the south side of the road, overgrown on the north side. No apparent flow.
Xingu St	Ditch overgrown, no visible flow.
179th Ave	Ditch overgrown, no visible flow.
Ussuri St	Ditch defined and flowing to the east. (This street is identified as Ural St on the map.)
MacKenzie St	Ponds dug on both sides of the road. Flow to the east.
CSAH # 18	Well defined wide ditch. Flow to the north.
D N R Road	Clear ditch, with overflow structure on the west side of the road. Good flow to the east. Pool Elevation on west side-7.00' (Gage Reading.)

ACTIVITIES:



AREA

POND

POND

POND

POND

MANAGEMENT

#35

#35

#35

#35

WILDLIFE

#35

#35

CO DIT #35

ANOKA COUNTY HWY. RIGHT OF WAY PLAT NO. 29

COUNTY STATE HWY HIGHWAY NO. 197

LIMIT OF TOWNSHIP

(6600)

(6800)

(7000)

(7200)

(7400)

(7600)

(7800)

(8000)

(8200)

(8400)

(8600)

(7000)

(7200)

(7400)

(7600)

(7800)

(7000)

(7200)

(7400)

(7000)

(7200)

(7400)

12500 AVE

100TH AVE

20TH AVE

19TH AVE

18TH AVE

17TH AVE

16TH AVE

15TH AVE

14TH AVE

13TH AVE

12TH AVE

11TH AVE

10TH AVE

9TH AVE

8TH AVE

7TH AVE

6TH AVE

5TH AVE

4TH AVE

3RD AVE

2ND AVE

1ST AVE

0TH AVE

WEST AVENUE

1ST ST

2ND ST

3RD ST

4TH ST

5TH ST

6TH ST

7TH ST

8TH ST

9TH ST

10TH ST

11TH ST

12TH ST

13TH ST

14TH ST

15TH ST

16TH ST

17TH ST

18TH ST

19TH ST

20TH ST

21ST ST

22ND ST

23RD ST

24TH ST

25TH ST

26TH ST

27TH ST

28TH ST

29TH ST

30TH ST

31ST ST

32ND ST

33RD ST

34TH ST

35TH ST

36TH ST

37TH ST

38TH ST

39TH ST

40TH ST

41ST ST

42ND ST

43RD ST

44TH ST

45TH ST

46TH ST

47TH ST

48TH ST

49TH ST

50TH ST

51ST ST

52ND ST

53RD ST

54TH ST

55TH ST

56TH ST

57TH ST

58TH ST

59TH ST

60TH ST

61ST ST

62ND ST

63RD ST

64TH ST

65TH ST

66TH ST

67TH ST

68TH ST

69TH ST

70TH ST

71ST ST

72ND ST

73RD ST

74TH ST

75TH ST

76TH ST

77TH ST

78TH ST

79TH ST

80TH ST

81ST ST

82ND ST

83RD ST

84TH ST

85TH ST

86TH ST

87TH ST

88TH ST

89TH ST

90TH ST

91ST ST

92ND ST

93RD ST

94TH ST

95TH ST

96TH ST

97TH ST

98TH ST

99TH ST

100TH ST

101ST ST

102ND ST

103RD ST

104TH ST

105TH ST

106TH ST

107TH ST

108TH ST

109TH ST

110TH ST

111TH ST

112ND ST

113RD ST

114TH ST

115TH ST

116TH ST

117TH ST

118TH ST

119TH ST

120TH ST

121ST ST

122ND ST

123RD ST

124TH ST

125TH ST

126TH ST

127TH ST

128TH ST

129TH ST

130TH ST

131ST ST

132ND ST

133RD ST

134TH ST

135TH ST

136TH ST

137TH ST

138TH ST

139TH ST

140TH ST

141ST ST

142ND ST

143RD ST

144TH ST

145TH ST

146TH ST

147TH ST

148TH ST

149TH ST

150TH ST

151ST ST

152ND ST

153RD ST

154TH ST

155TH ST

156TH ST

157TH ST

158TH ST

159TH ST

160TH ST

161ST ST

162ND ST

163RD ST

164TH ST

165TH ST

166TH ST

167TH ST

168TH ST

169TH ST

170TH ST

171ST ST

172ND ST

173RD ST

174TH ST

175TH ST

176TH ST

177TH ST

178TH ST

179TH ST

180TH ST

181ST ST

182ND ST

183RD ST

184TH ST

185TH ST

186TH ST

187TH ST

188TH ST

189TH ST

190TH ST

191ST ST

192ND ST

193RD ST

194TH ST

195TH ST

196TH ST

197TH ST

198TH ST

199TH ST

200TH ST

201ST ST

202ND ST

203RD ST

204TH ST

205TH ST

206TH ST

207TH ST

208TH ST

209TH ST

210TH ST

211ST ST

212ND ST

213RD ST

214TH ST

215TH ST

216TH ST

217TH ST

218TH ST

219TH ST

220TH ST

221ST ST

222ND ST

223RD ST

224TH ST

225TH ST

226TH ST

227TH ST

228TH ST

229TH ST

230TH ST

231ST ST

232ND ST

233RD ST

234TH ST

235TH ST

236TH ST

237TH ST

238TH ST

239TH ST

240TH ST

241ST ST

242ND ST

243RD ST

244TH ST

245TH ST

246TH ST

247TH ST

248TH ST

249TH ST

250TH ST

251ST ST