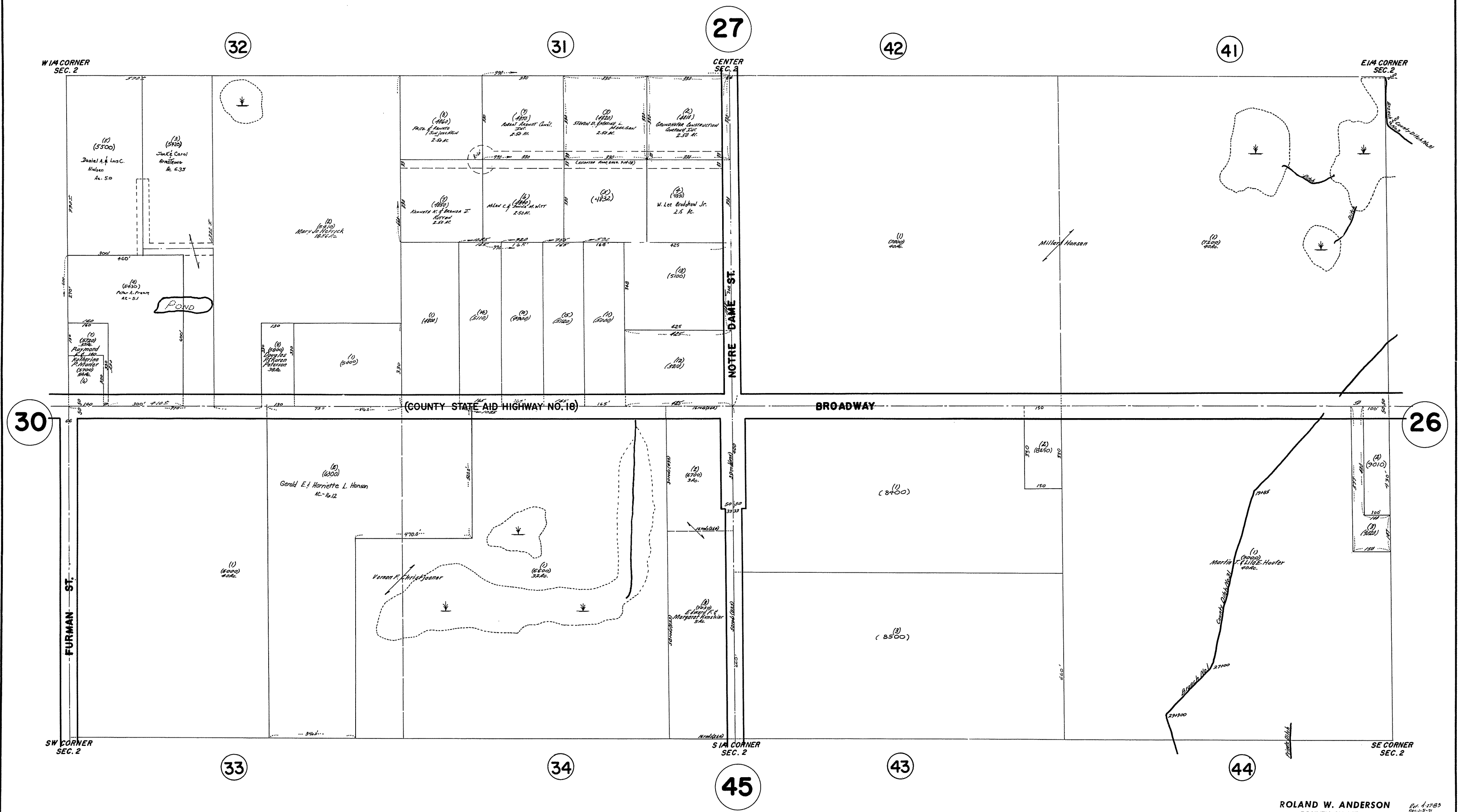


S 1/2 SEC. 2, T. 32, R. 22

TOWNSHIP OF COLUMBUS

THIS IS A COMPILATION OF RECORDS AS THEY APPEAR IN THE ANOKA COUNTY OFFICES AFFECTING THE AREA SHOWN. THIS DRAWING IS TO BE USED ONLY FOR REFERENCE PURPOSES AND THE COUNTY IS NOT RESPONSIBLE FOR ANY INACCURACIES HEREIN CONTAINED.

38702



ROLAND W. ANDERSON
 COUNTY SURVEYOR
 ANOKA COUNTY, MINNESOTA

Plat. 4-1785
 Rev. 11-2-74
 Rev. 11-2-76
 Rev. 11-2-76
 Rev. 5-2-85
 G. W. J. 1-64