

ANOKA COUNTY
COUNTY DITCH INSPECTION REPORT

DITCH # 36

DATE: 7/13/94

BY: P K Ruud

COMMUNITIES: East Bethel

REMARKS:

Klondike Road Ditch faintly discernible, overgrown with brush and canary grass.
No apparent flow.

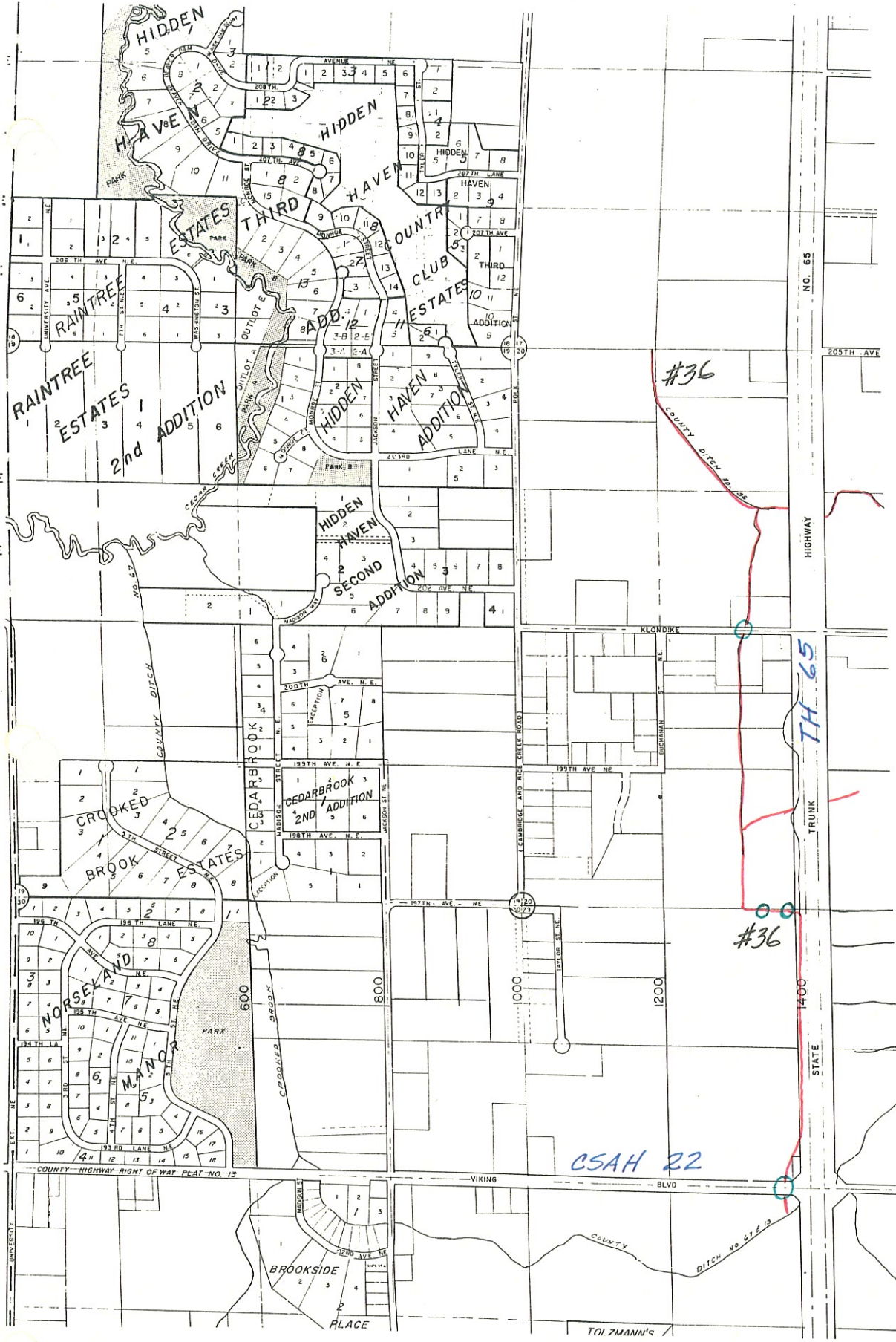
Private Road (1/2 mile north of # 22) Ditch along west side of T H # 65
maintained and some flow to the south.
Ditch west 0.1 mile defined and maintained. No apparent flow.
Both of these ditches are connected.

CSAH # 22 Ditch along west side of T H 65 defined and flowing well.

Note: As a part of the overlay and culvert repair project being done by MN/DOT, the culvert that carries DITCH #36 under CSAH # 22 will be replaced by MN/DOT at their expense. (See the Public Works Committee Report for the August 1, 1994 meeting.)

ACTIVITIES:

Active peatland farming on 40 acres north of and 40 acres south of the above noted private road.



CO DIT #36

#36

7/13/94

PKR

Klondike Rd.

Ditch faintly discernible -
grown over with brush &
canary grass - no apparent
flow.

Private Rd. (1/2 mi. N. of #22) Ditch along west side
of TH 65 maintained and some
flow to south.

Ditch west 0.1 mi. defined
& maintained - no apparent
flow.

Both of these ditches are
connected.

Active peatland farming on 40
Ac. on north side and on
40 Ac. on south side.

#22

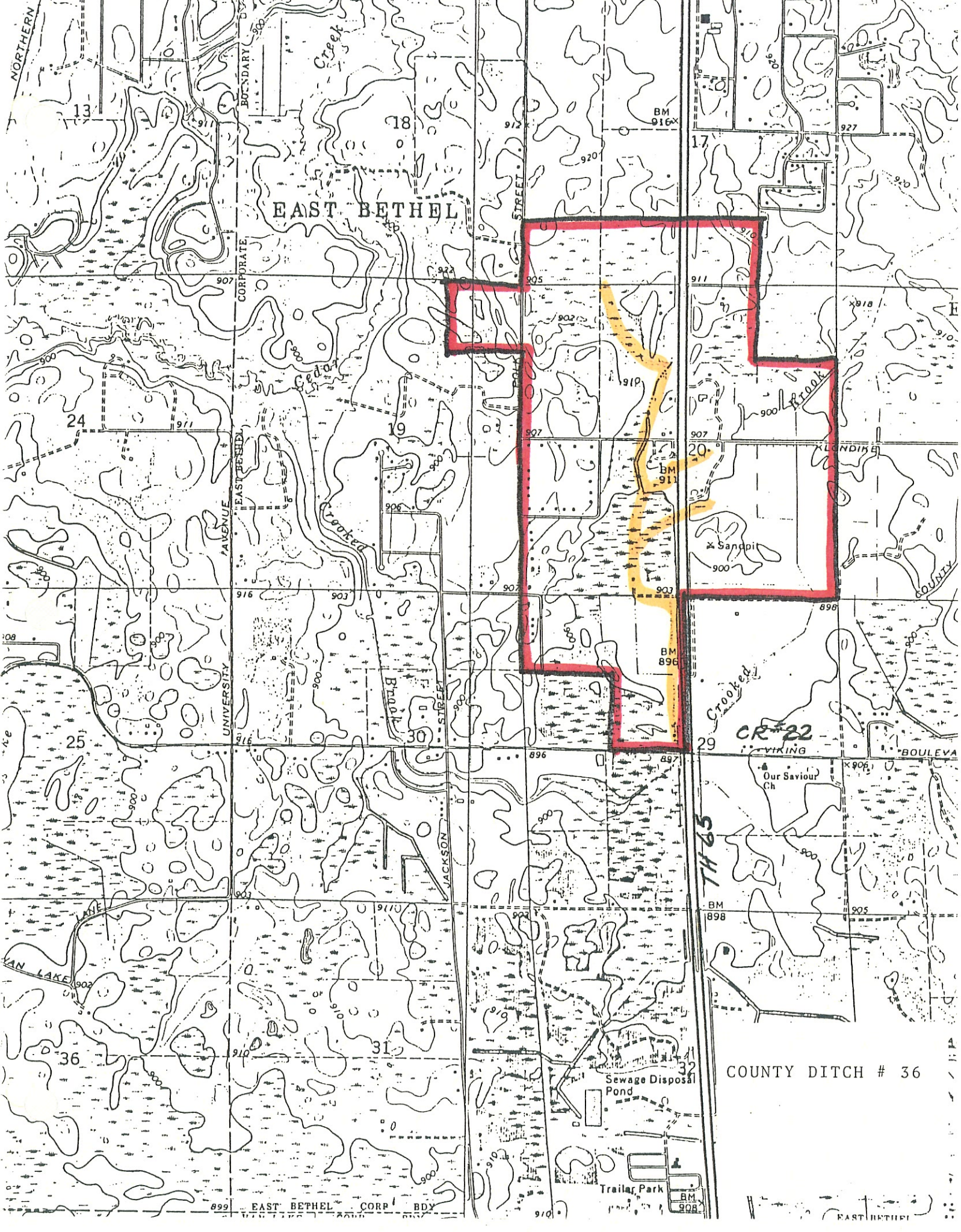
Ditch, along west side of
TH 65 defined & flowing
to south.

PUBLIC DRAINAGE DITCH INVENTORY FORM
(Laws of 1990, Chapter 601, Section 27)

1. Drainage authority name: Anoka County (East Bethel)
2. Drainage ditch name and number: #36
3. Ditch location and drainage area boundary: (shown on attached quadrangle map)
4. Drainage area in acres: 840 ; Benefitted area in acres: 258
5. Approximate length in miles: Open Ditch 2.65 Buried Tile 0
6. Year constructed: 1899 ; Original cost: \$ 611.30
7. Are original plans on file? Yes No ; Location: Anoka County Courthouse
8. Date of original plans: 1899
9. Are "as built" plans on file? Yes No ; Location:
10. Year(s) improved: None
11. Are improvement plans on file? Yes No N/A ; Location:
12. Year(s) repaired: None
13. Are repair plans on file? Yes No ; Location:
14. If the ditch was transferred from a county or joint county ditch authority to a watershed district or WMO, is the transfer order on file? Yes No NA
15. Is the list of lands benefitted and damaged on file? Yes No
16. Have the benefits and damages been redetermined? Yes No ; If yes, year(s) of redetermination:
17. Has right-of-way been acquired for a 1-rod permanent grassed strip? Yes No ; If yes, has it been maintained? Yes No N/A
18. Is there a maintenance fund for the ditch? Yes No ; If yes, current balance in maintenance fund: \$
19. What was the last year maintenance work was performed by drainage authority: unknown

PUBLIC DRAINAGE DITCH INVENTORY FORM
(Laws of 1990, Chapter 601, Section 27)

1. Drainage authority name: Anoka County (East Bethel)
2. Drainage ditch name and number: #36
3. Ditch location and drainage area boundary: (shown on attached quadrangle map)
4. Drainage area in acres: 840 ; Benefitted area in acres: 258
5. Approximate length in miles: Open Ditch 2.65 Buried Tile 0
6. Year constructed: 1899 ; Original cost: \$ 611.30
7. Are original plans on file? Yes No ; Location: Anoka County Courthouse
8. Date of original plans: 1899
9. Are "as built" plans on file? Yes No ; Location: _____
10. Year(s) improved: None
11. Are improvement plans on file? Yes No N/A ; Location: _____
12. Year(s) repaired: None
13. Are repair plans on file? Yes No ; Location: _____
14. If the ditch was transferred from a county or joint county ditch authority to a watershed district or WMO, is the transfer order on file? Yes No NA
15. Is the list of lands benefitted and damaged on file? Yes No
16. Have the benefits and damages been redetermined? Yes No ; If yes, year(s) of redetermination: _____
17. Has right-of-way been acquired for a 1-rod permanent grassed strip? Yes No ; If yes, has it been maintained? Yes No N/A
18. Is there a maintenance fund for the ditch? Yes No ; If yes, current balance in maintenance fund: \$ _____
19. What was the last year maintenance work was performed by drainage authority: unknown



EAST BETHEL

COUNTY DITCH # 36

EAST BETHEL CORP BDY

Trailer Park

Our Saviour Ch

CR #22

TH 85

KLONDIKE

900 Brook

Crooked

Brook

Crooked

NORTHERN

CORPORATE

EAST BETHEL

UNIVERSITY

AVENUE

STREET

JACKSON

STREET

STREET

POLK

STREET

JACKSON

STREET

STREET

STREET

STREET

17

18

19

20

21

22

23

24

25

26

27

28

927

920

911

907

907

896

896

897

898

898

BM 916

BM 911

BM 896

BM 898

BM 908

918

910

900

900

906

905

905

905

905

13

911

900

911

900

900

900

902

910

899

18

922

906

906

900

900

910

900

900

910

912

920

905

902

907

907

902

902

902

910

927

911

907

907

896

897

898

898

898

898

927

911

907

907

896

897

898

898

898

898

BM 916

BM 911

BM 896

BM 898

BM 908

918

910

900

900

906

905

905

905

905

13

911

900

911

900

900

900

902

910

899

18

922

906

906

900

900

910

900

900

910

912

920

905

902

907

907

902

902

902

910

927

911

907

907

896

897

898

898

898

898

BM 916

BM 911

BM 896

BM 898

BM 908

918

910

900

900

906

905

905

905

905

13

911

900

911

900

900

900

902

910

899

18

922

906

906

900

900

910

900

900

910

912

920

905

902

907

907

902

902

902

910

927

911

907

907

896

897

898

898

898

898

BM 916

BM 911

BM 896

BM 898

BM 908

918

910

900

900

906

905

905

905

905

13

911

900

911

900

900

900

902

910

899

18

922

906

906

900

900

910

900

900

910

912

920

905

902

907

907

902

902

902

910

927

911

907

907

896

897

898

898

898

898

BM 916

BM 911

BM 896

BM 898

BM 908

918

910

900

900

906

905

905

905

905

13

911

900

911

900

900

900

902

910

899

18

922

906

906

900

900

910

900

900

910

912

920

905

902

907

907

902

902

902

910

927

911

907

907

896

897

898

898

898

898

BM 916

BM 911

BM 896

BM 898

BM 908

918

910