

ANOKA COUNTY
COUNTY DITCH INSPECTION REPORT

DITCH # 36

DATE: 7/13/94

BY: P K Ruud

COMMUNITIES: East Bethel

REMARKS:

Klondike Road Ditch faintly discernible, overgrown with brush and canary grass.
No apparent flow.

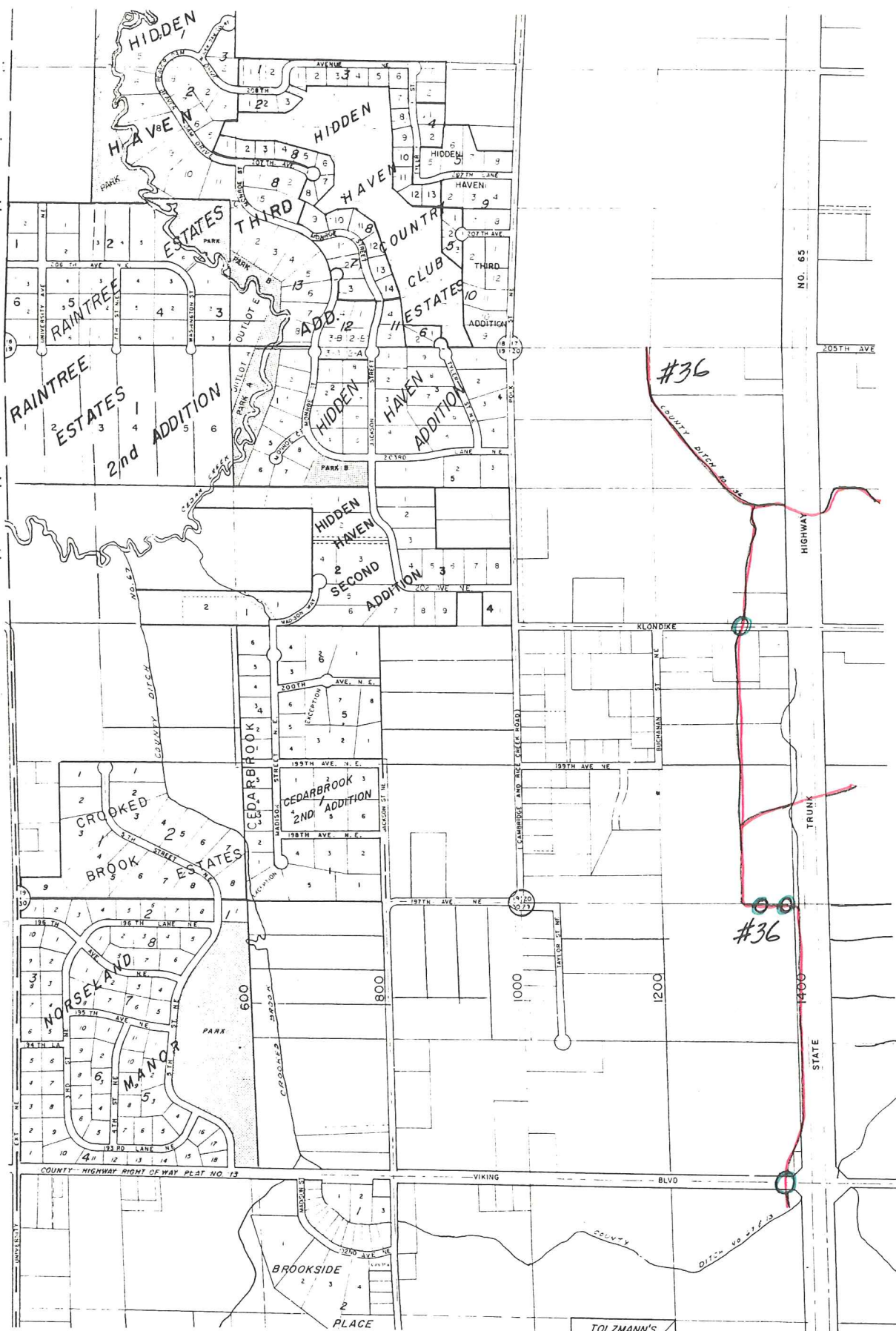
Private Road (1/2 mile north of # 22) Ditch along west side of T H # 65
maintained and some flow to the south.
Ditch west 0.1 mile defined and maintained. No apparent flow.
Both of these ditches are connected.

CSAH # 22 Ditch along west side of T H 65 defined and flowing well.

Note: As a part of the overlay and culvert repair project being done by MN/DOT, the culvert that carries DITCH #36 under CSAH # 22 will be replaced by MN/DOT at their expense. (See the Public Works Committee Report for the August 1, 1994 meeting.)

ACTIVITIES:

Active peatland farming on 40 acres north of and 40 acres south of the above noted private road.



CO DIT #36