

S 1/2 SEC. 14, T. 32, R. 24

CITY OF ANDOVER

THIS IS A COMPILATION OF RECORDS AS THEY APPEAR IN THE ANOKA COUNTY OFFICES AFFECTING THE AREA SHOWN. THIS DRAWING IS TO BE USED ONLY FOR REFERENCE PURPOSES AND THE COUNTY IS NOT RESPONSIBLE FOR ANY INACCURACIES HEREIN CONTAINED.

65914

27

W 1/4 CORNER SEC. 14

CENTER SEC. 14

E 1/4 CORNER SEC. 14

(COUNTY STATE AID HIGHWAY NO. 20) 161ST AVE. NW

30

26

NORTHERN ING.

(COUNTY STATE AID HIGHWAY NO. 19)

BURLINGTON

CROSSSTOWN BLVD.

158 TH AVE. N.W.

SYCAMORE ST.

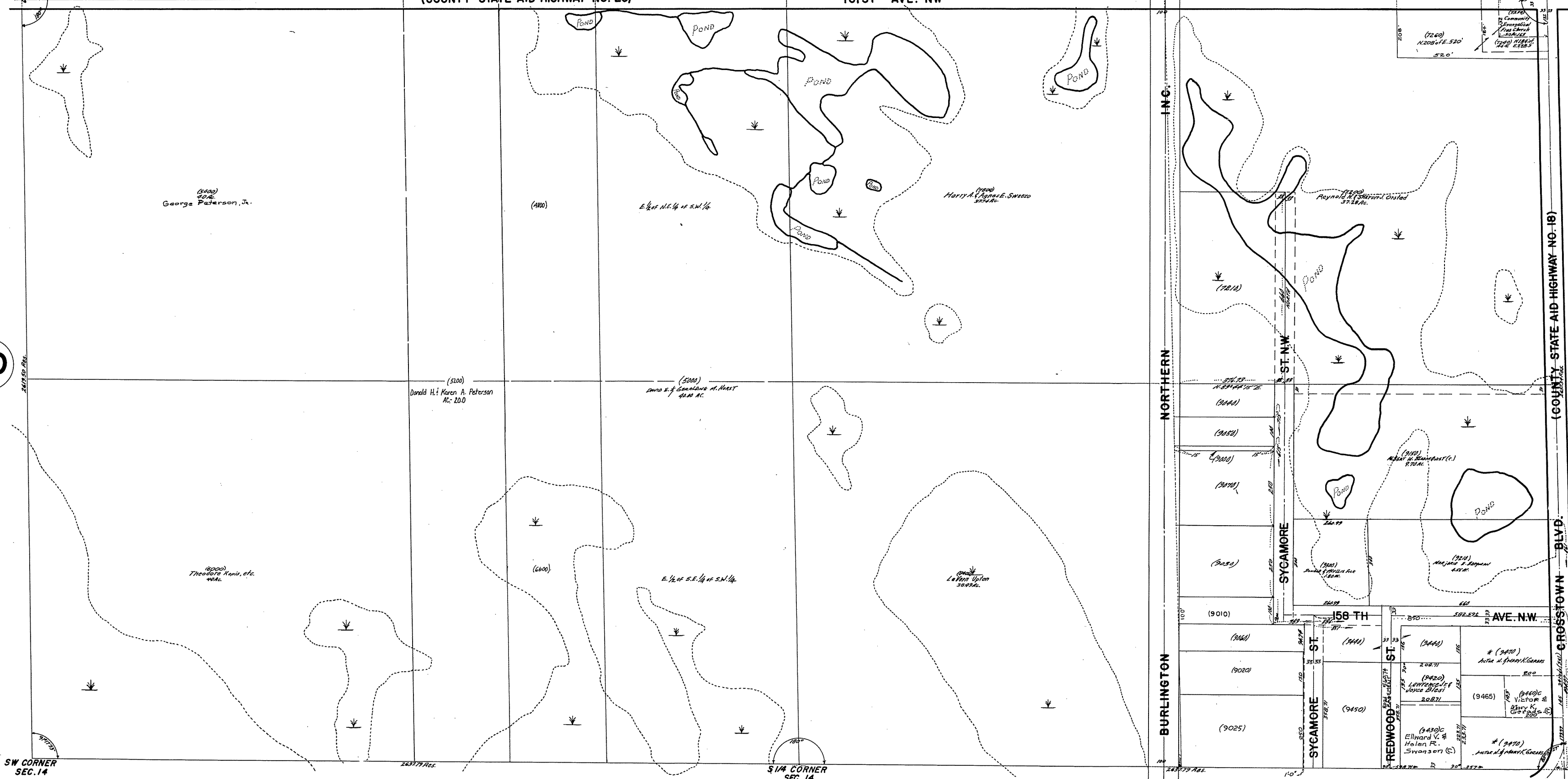
REDWOOD ST.

SW CORNER SEC. 14

S 1/4 CORNER SEC. 14

SE CORNER SEC. 14

45



ROLAND W. ANDERSON
 COUNTY SURVEYOR
 ANOKA COUNTY, MINNESOTA

REV-10-77
 REV-12-31-79
 REV-10-8-79
 REV-7-18-79
 REV-3-18-79
 REV-10-2-78
 REV-3-3-64