

N 1/2 SEC. 21, T. 32, R. 24

TOWNSHIP OF GROW

THIS IS A COMPILATION OF RECORDS AS THEY APPEAR IN THE ANOKA COUNTY OFFICES AFFECTING THE AREA SHOWN. THIS DRAWING IS TO BE USED ONLY FOR REFERENCE PURPOSES AND THE COUNTY IS NOT RESPONSIBLE FOR ANY INACCURACIES HEREIN CONTAINED.

65921

32

N 1/4 CORNER SEC. 21

NE CORNER SEC. 21

NW CORNER SEC. 21

ROUND LAKE BLVD.
HIGHWAY NO. 9
STATE AID
COUNTY

39

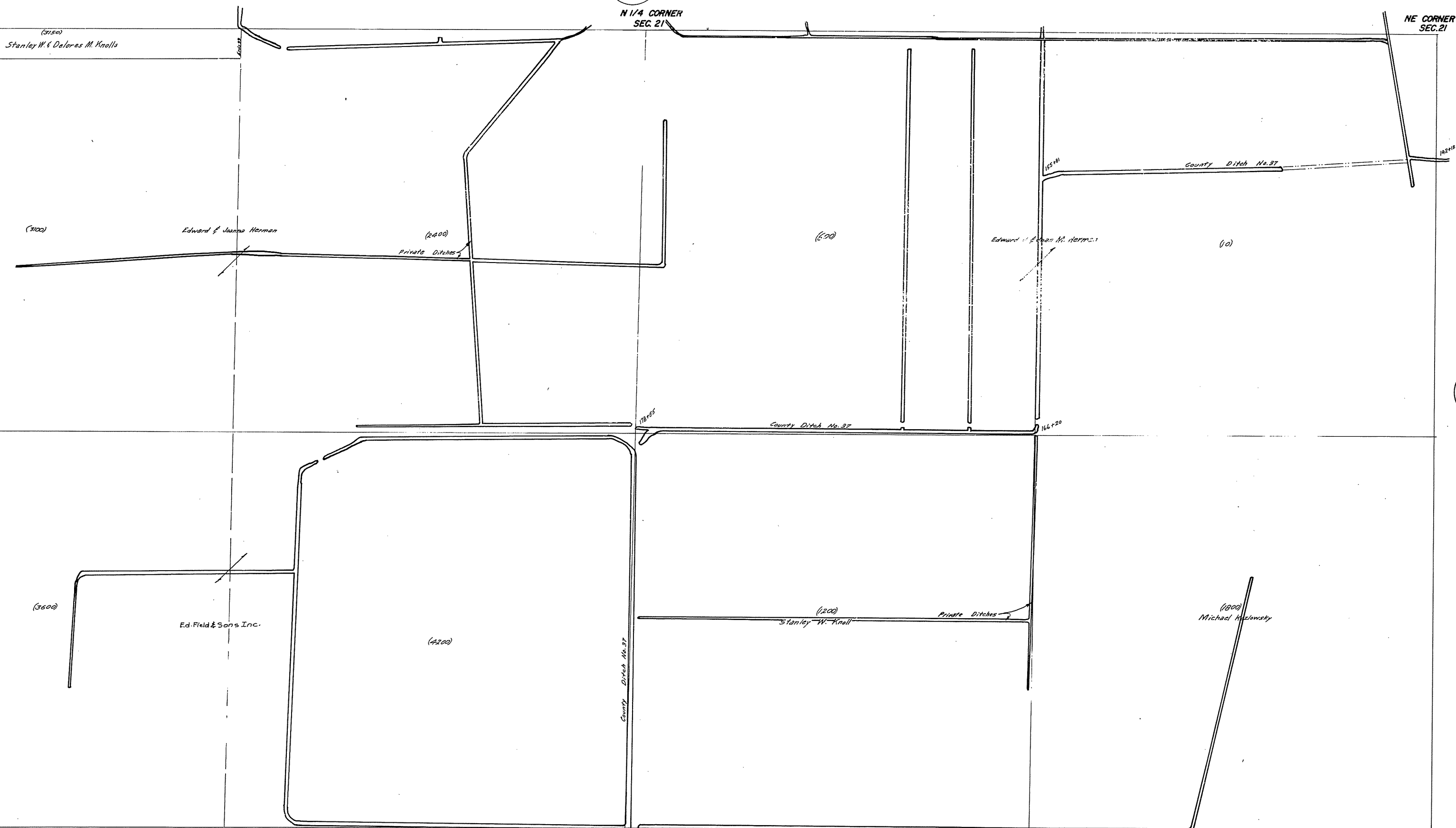
43

W 1/4 CORNER SEC. 21

CENTER SEC. 21

E 1/4 CORNER SEC. 21

42



Rev. 3-18-70
 Rev. 10-1-77
 Rev. 3-1-86
 Rev. 3-1-88
 Rev. 2-20-88
 Rev. 4-20-89