

ANOKA COUNTY
COUNTY DITCH INSPECTION REPORT

DITCH # 38

DATE: 7/12/94

BY: P K Ruud

COMMUNITIES: East Bethel

REMARKS:

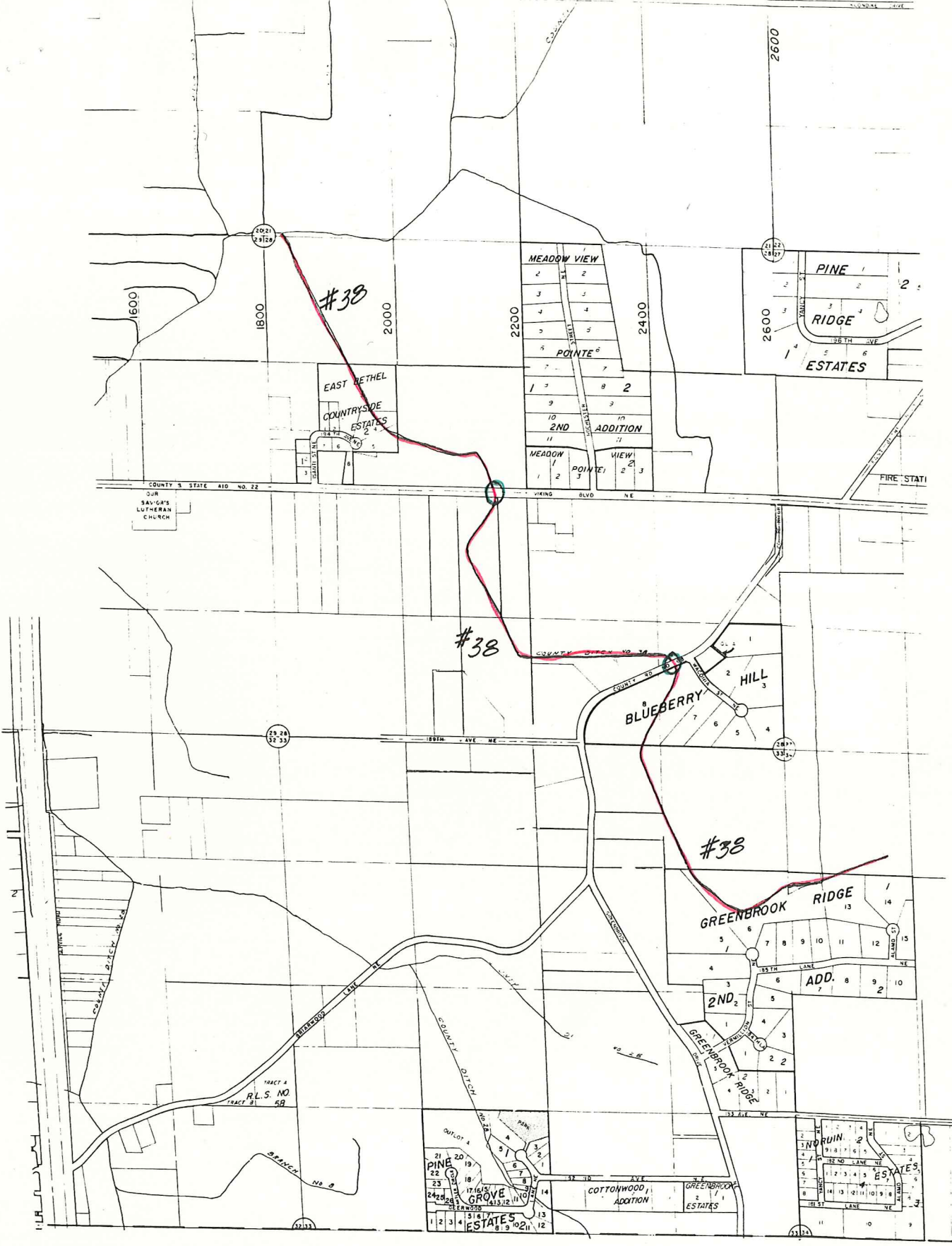
C R # 68

Ditch well defined and flowing to the west.

CSAH # 22

Ditch defined but overgrown on north side with brush and grass.
Slow flow to the north.

ACTIVITIES:



CO DIT # 38