

N 1/2 SEC. 19, T. 31, R. 23

VILLAGE OF BLAINE

THIS IS A COMPILATION OF RECORDS AS THEY APPEAR IN THE ANOKA COUNTY OFFICES AFFECTING THE AREA SHOWN. THIS DRAWING IS TO BE USED ONLY FOR REFERENCE PURPOSES AND THE COUNTY IS NOT RESPONSIBLE FOR ANY INACCURACIES HEREIN CONTAINED.

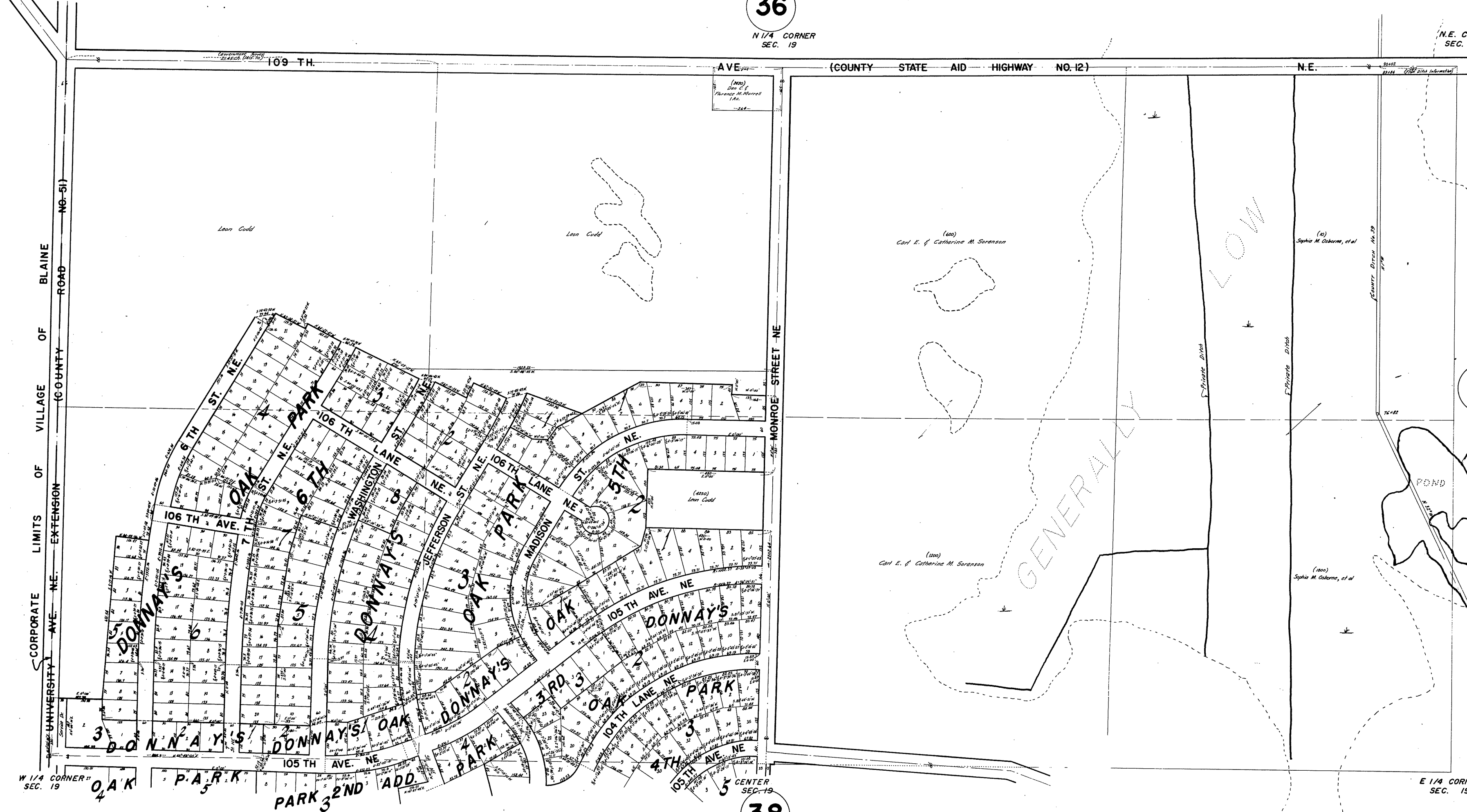
14119

36

N 1/4 CORNER SEC. 19

N.E. CORNER SEC. 19

N.W. CORNER SEC. 19



(COUNTY STATE AID HIGHWAY NO. 12)

N.E.

CORPORATE LIMITS OF VILLAGE OF BLAINE (COUNTY ROAD NO. 51) EXTENSION

MONROE STREET - NE

39

W 1/4 CORNER SEC. 19

E 1/4 CORNER SEC. 19

38