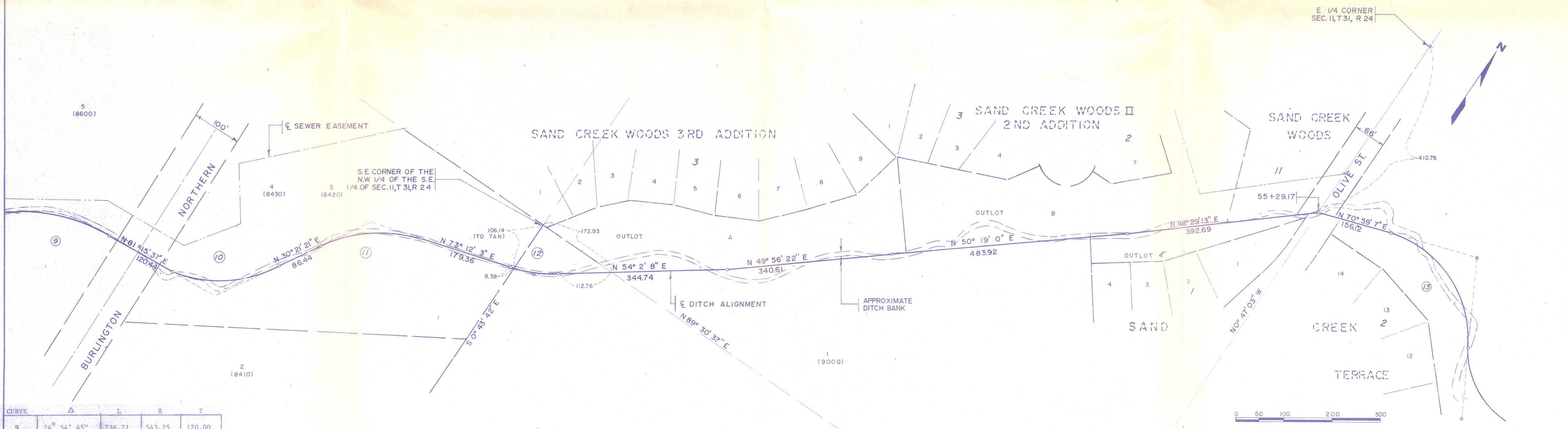


CURVE	Δ	L	R	T
1	75° 6' 16"	102.30	78.05	60.0
2	33° 2' 1"	134.27	232.89	69.06
3	39° 31' 56"	109.01	104.91	60.00
4	38° 27' 42"	187.74	279.67	97.56
5	16° 48' 28"	99.28	338.44	50.00
6	30° 10' 7"	195.36	371.02	100.00
7	23° 38' 21"	118.29	286.71	60.00
8	15° 21' 33"	119.28	444.96	60.00
9	24° 54' 45"	236.21	543.25	120.00



CURVE	Δ	L	R	T
9	24° 54' 45"	236.21	543.25	120.00
10	50° 54' 16"	224.00	252.13	120.00
11	42° 50' 43"	228.71	305.85	120.00
12	19° 9' 56"	99.07	296.16	50.00
13	79° 47' 25"	304.37	218.56	182.71

REVISED	 ISRAELSON AND ASSOCIATES, INC. CONSULTING ENGINEERS-LAND SURVEYORS 9100 WEST BLOOMINGTON FREEWAY BLOOMINGTON, MINNESOTA 55431 PHONE (612) 884-5371	DITCH # 41 (SAND CREEK)
DATE 7/11/83 BY KWH FILE 304-00ID BOOK		COON CREEK WATERSHED DISTRICT
JOB	SHEET 1 OF 3 SHEETS	

RECEIVED OCT 31 1983