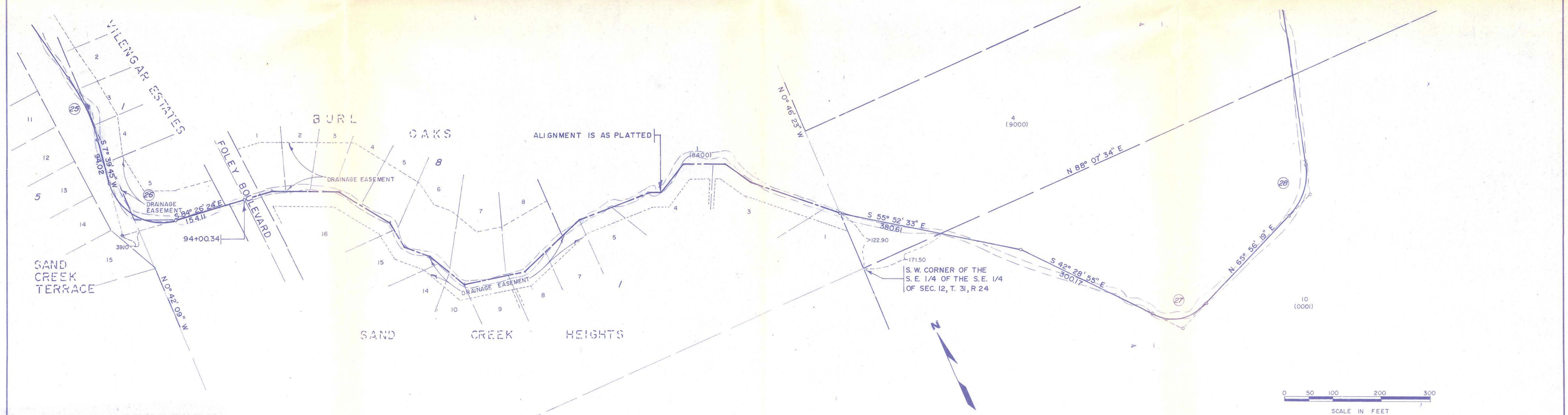


CURVE	Δ	L	R	T
13	79° 47' 25"	304.37	218.56	182.71
14	85° 50' 54"	233.60	155.91	145.00
15	50° 18' 48"	306.89	349.48	164.13
16	69° 39' 31"	118.89	97.79	68.04
17	62° 12' 26"	130.43	120.13	72.48
18	50° 40' 32"	162.03	183.20	86.75
19	70° 9' 4"	150.68	123.06	86.41
20	33° 9' 16"	87.48	151.17	45.00
21	48° 36' 54"	119.29	140.59	63.50
22	56° 43' 40"	261.88	264.51	142.80
23	50° 40' 13"	313.19	354.14	167.67
24	54° 39' 3"	239.98	251.60	130.00
25	20° 23' 30"	138.52	389.21	70.00



CURVE	Δ	L	R	T
25	20° 23' 30"	138.52	389.21	70.00
26	92° 6' 8"	170.45	106.04	110.00
27	71° 34' 46"	121.30	97.09	70.00
28	52° 37' 46"	111.44	121.32	60.00

REVISED		ISRAELSON AND ASSOCIATES, INC. CONSULTING ENGINEERS-LAND SURVEYORS 9100 WEST BLOOMINGTON FREEWAY BLOOMINGTON, MINNESOTA 55431 PHONE (612) 884-5371	DITCH 41 (SAND CREEK) COON CREEK WATERSHED DISTRICT		
DATE 7/8/83				BY KWH	FILE 304-00ID

RECEIVED OCT 31 1983