

# S 1/2 SEC. 28 T. 31 R. 23

CITY OF BLAINE

THIS IS A COMPILATION OF RECORDS AS THEY APPEAR IN THE ANOKA COUNTY OFFICES AFFECTING THE AREA SHOWN. THIS DRAWING IS TO BE USED ONLY FOR REFERENCE PURPOSES AND THE COUNTY IS NOT RESPONSIBLE FOR ANY INACCURACIES HEREIN CONTAINED.

14128

W 1/4 CORNER SEC. 28

E 1/4 CORNER SEC. 28

58

54

S.W. CORNER SEC. 28

S 1/4 CORNER SEC. 28

S.E. CORNER SEC. 28

32

31

55

42

41

33

34

65

43

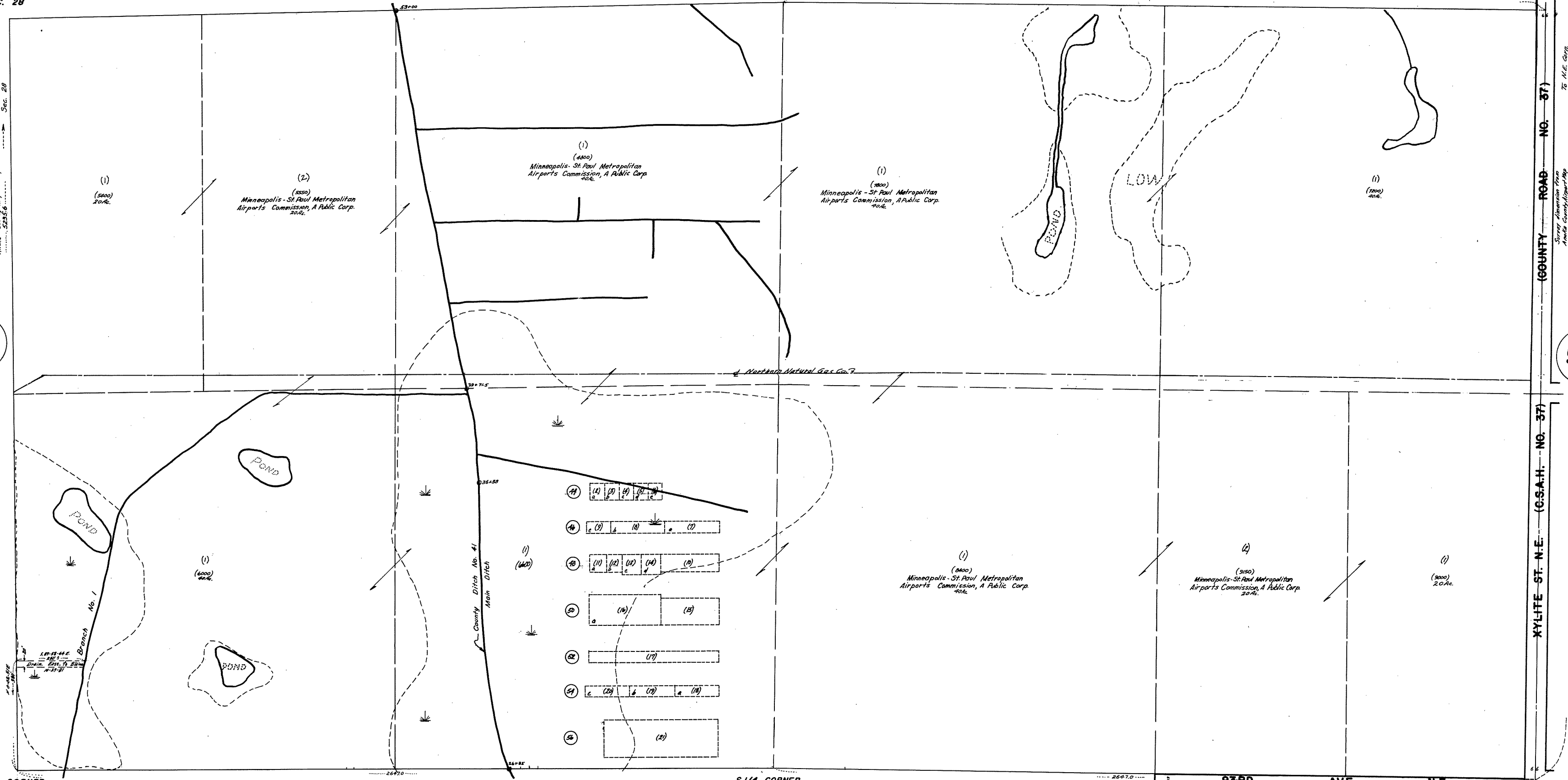
44

Survey dimension from Anoka County Airport Map No. 52556

Survey dimension from Anoka County Airport Map No. 52556

COUNTY ROAD NO. 37

XYLITE ST. N.E. (C.S.A.H. NO. 37)



REVISED AUGUST 1982