

N 1/2 SEC. 33 T. 31 R. 23

CITY OF BLAINE

THIS IS A COMPILATION OF RECORDS AS THEY APPEAR IN THE ANOKA COUNTY OFFICES AFFECTING THE AREA SHOWN. THIS DRAWING IS TO BE USED ONLY FOR REFERENCE PURPOSES AND THE COUNTY IS NOT RESPONSIBLE FOR ANY INACCURACIES HEREIN CONTAINED.

14133

56
N 1/4 CORNER SEC. 33

21

12

11

22

N.W. CORNER SEC. 33

N.E. CORNER SEC. 33

63

67

66
CENTER SEC. 33

13

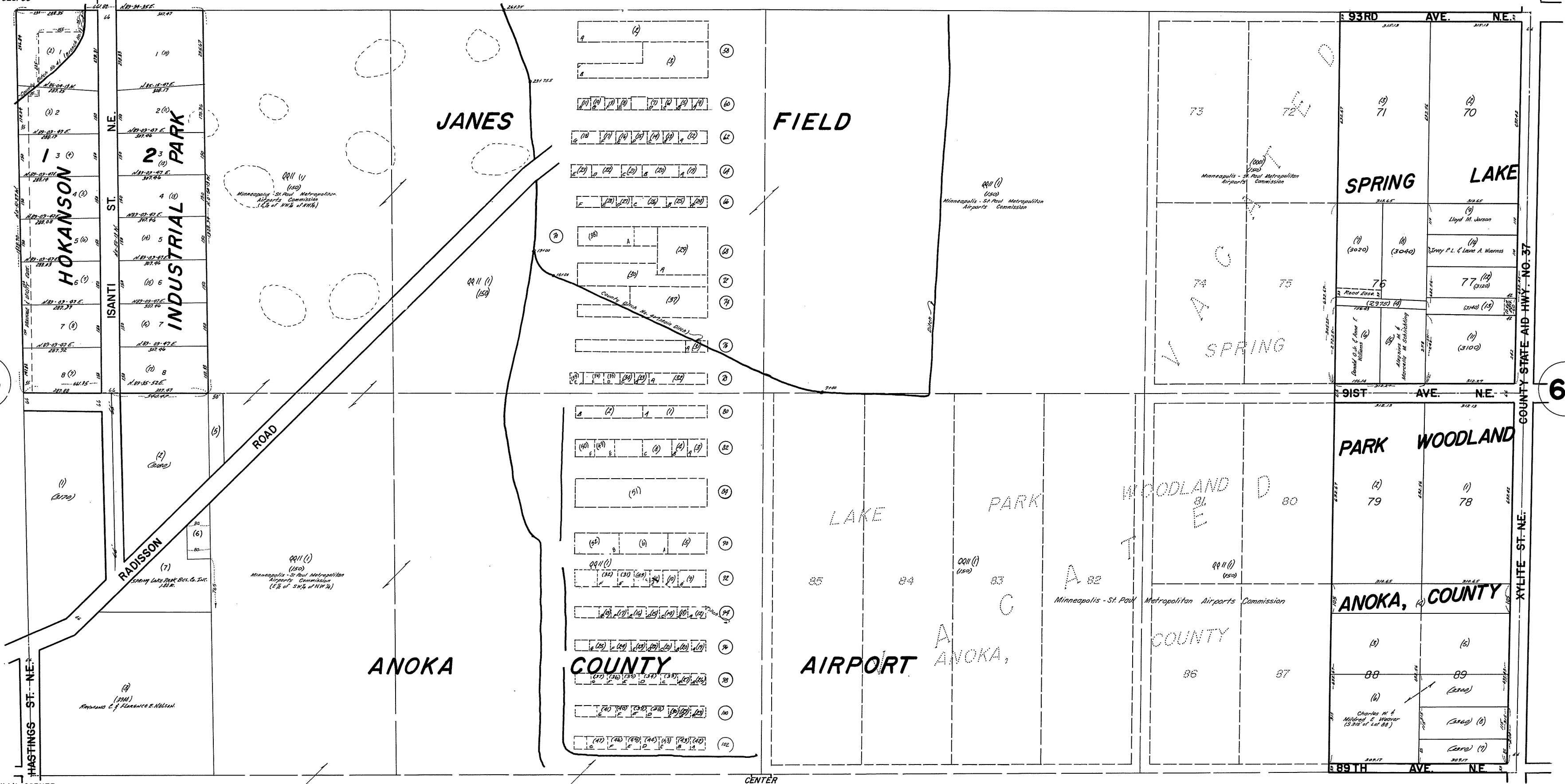
14

23

24

W 1/4 CORNER SEC. 33

E 1/4 CORNER SEC. 33



COUNTY STATE AID HWY. NO. 37
XYLITE ST. N.E.

ANOKA, COUNTY

ANOKA, COUNTY

ANOKA, COUNTY

12-10-05
R1-13-11
R1-13-12
R1-13-13
R1-13-14
R1-13-15
R1-13-16
R1-13-17
R1-13-18
R1-13-19
R1-13-20
R1-13-21
R1-13-22
R1-13-23
R1-13-24
R1-13-25
R1-13-26
R1-13-27
R1-13-28
R1-13-29
R1-13-30
R1-13-31
R1-13-32
R1-13-33
R1-13-34
R1-13-35
R1-13-36
R1-13-37
R1-13-38
R1-13-39
R1-13-40
R1-13-41
R1-13-42
R1-13-43
R1-13-44
R1-13-45
R1-13-46
R1-13-47
R1-13-48
R1-13-49
R1-13-50
R1-13-51
R1-13-52
R1-13-53
R1-13-54
R1-13-55
R1-13-56
R1-13-57
R1-13-58
R1-13-59
R1-13-60
R1-13-61
R1-13-62
R1-13-63
R1-13-64
R1-13-65
R1-13-66
R1-13-67
R1-13-68
R1-13-69
R1-13-70
R1-13-71
R1-13-72
R1-13-73
R1-13-74
R1-13-75
R1-13-76
R1-13-77
R1-13-78
R1-13-79
R1-13-80
R1-13-81
R1-13-82
R1-13-83
R1-13-84
R1-13-85
R1-13-86
R1-13-87
R1-13-88
R1-13-89
R1-13-90
R1-13-91
R1-13-92
R1-13-93
R1-13-94
R1-13-95
R1-13-96
R1-13-97
R1-13-98
R1-13-99
R1-13-100