

S 1/2 SEC. 24, T. 32, R. 23

TOWNSHIP OF HAM LAKE

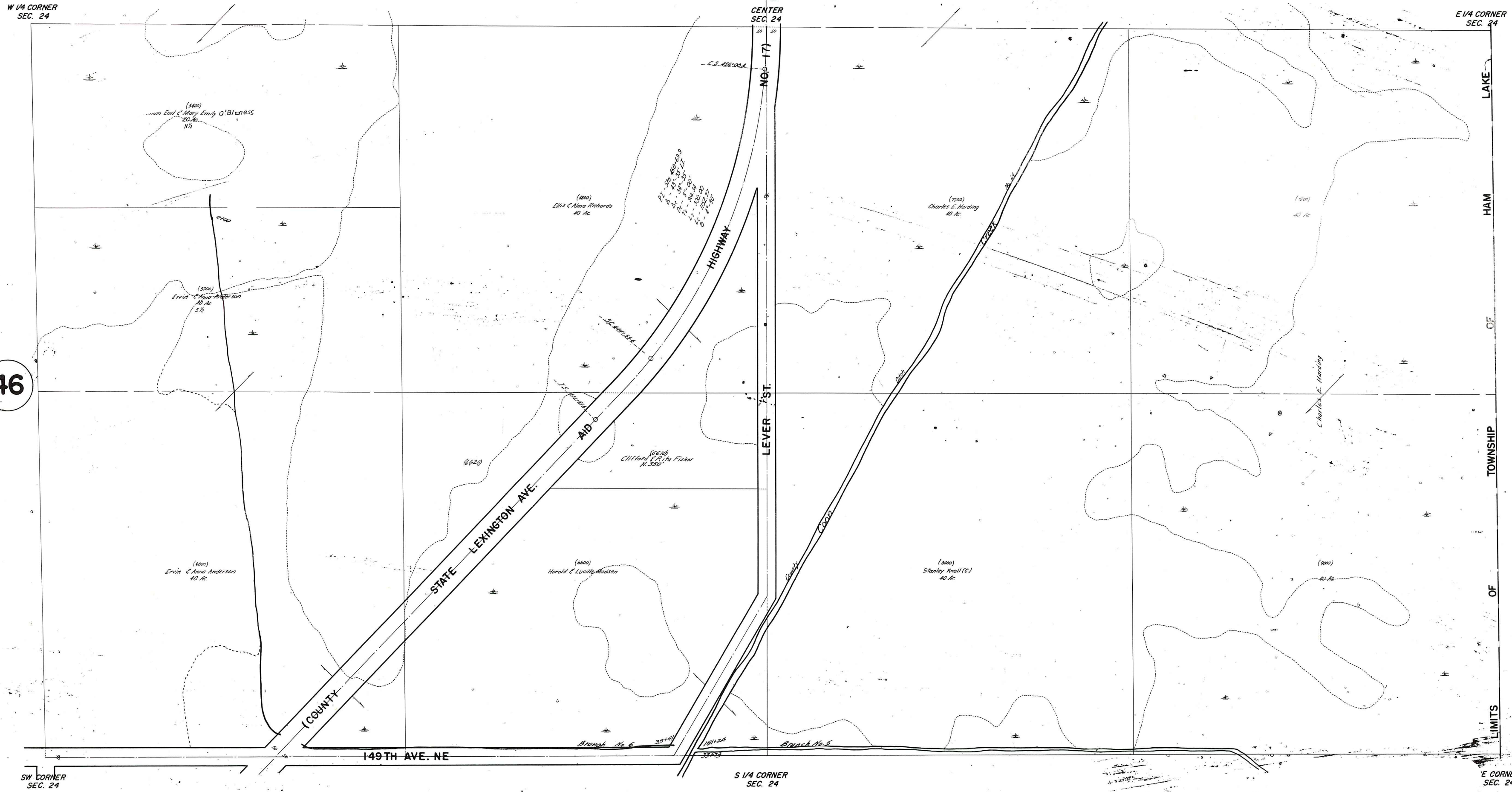
THIS IS A COMPILATION OF RECORDS AS THEY APPEAR IN THE ANOKA COUNTY OFFICES AFFECTING THE AREA SHOWN. THIS DRAWING IS TO BE USED ONLY FOR REFERENCE PURPOSES AND THE COUNTY IS NOT RESPONSIBLE FOR ANY INACCURACIES HEREIN CONTAINED.

73024

47

46

49



Nov 7-1970
 Rev 11-1-72
 Rev 12-1-72
 Rev 2-1-73
 Rev 8-1-75
 Rev 9-1-75
 Rev 11-1-75