

S 1/2 SEC. 25, T. 32, R. 23

CITY OF HAM LAKE

THIS IS A COMPILATION OF RECORDS AS THEY APPEAR IN THE ANOKA COUNTY OFFICES AFFECTING THE AREA SHOWN. THIS DRAWING IS TO BE USED ONLY FOR REFERENCE PURPOSES AND THE COUNTY IS NOT RESPONSIBLE FOR ANY INACCURACIES HEREIN CONTAINED.

73025

49
CENTER
SEC. 25

32

31

42

41

E 1/4 CORNER
SEC. 25

W 1/4 CORNER
SEC. 25

LEXINGTON AVE.
HIGHWAY NO. 17

LAKE
HAM
OF
CITY
OF
LIMITS

52

AID

STATE

COUNTY

SW CORNER
SEC. 25

33

34

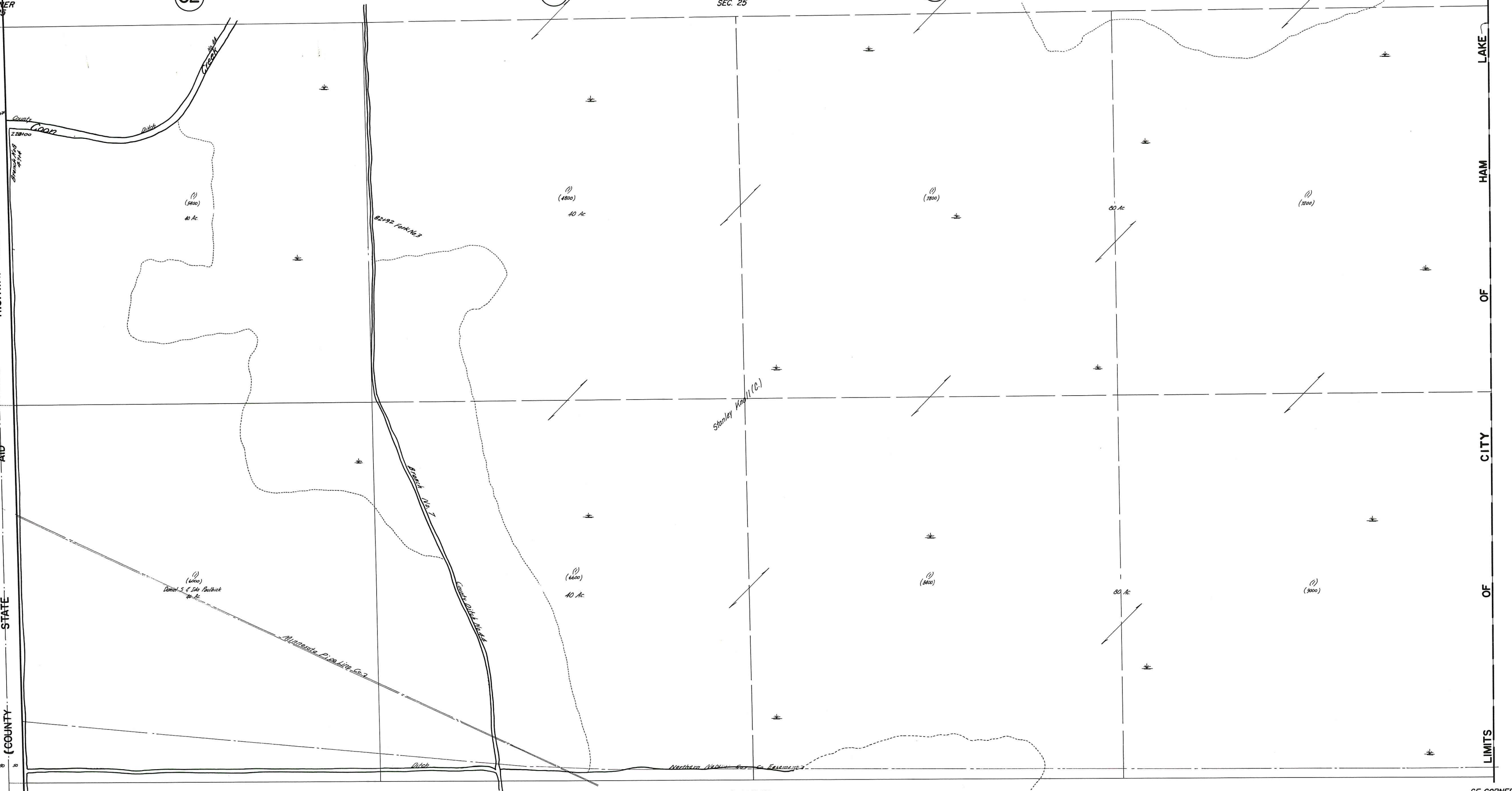
S 1/4 CORNER
SEC. 25

43

44

SE CORNER
SEC. 25

71



Rev. 10-22-82
 Rev. 7-21-79
 Rev. 6-2-68
 Rev. 5-2-62
 Rev. 8-19-61
 Rev. 3-16-51
 Rev. 1-24-52