

# S 1/2 SEC. 26, T. 32, R. 23

## CITY OF HAM LAKE

THIS IS A COMPILATION OF RECORDS AS THEY APPEAR IN THE ANOKA COUNTY OFFICES AFFECTING THE AREA SHOWN. THIS DRAWING IS TO BE USED ONLY FOR REFERENCE PURPOSES AND THE COUNTY IS NOT RESPONSIBLE FOR ANY INACCURACIES HEREIN CONTAINED.

73026

51  
CENTER  
SEC. 26

E 1/4 CORNER  
SEC. 26

W 1/4 CORNER  
SEC. 26

LEXINGTON AVE.  
HIGHWAY NO. 17

NAPLES ST.

AID

STATE

(COUNTY

SE CORNER  
SEC. 26

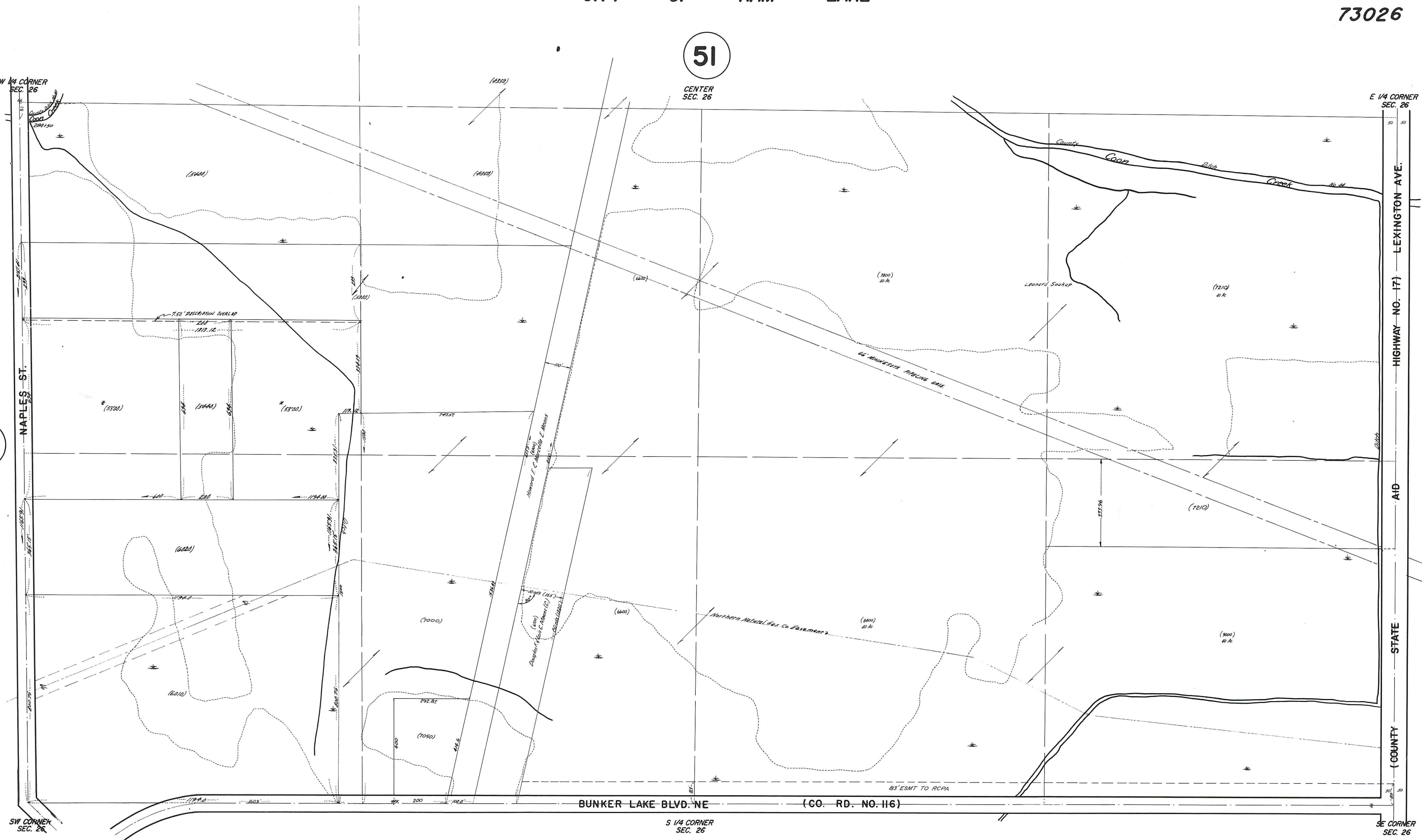
BUNKER LAKE BLVD. NE (CO. RD. NO. 116)

S 1/4 CORNER  
SEC. 26

69

54

50



Rev 7-21-70  
 Plan 11-2-68  
 1701 5-2-68  
 1702 9-2-68  
 1703 11-2-68  
 1704 12-2-68