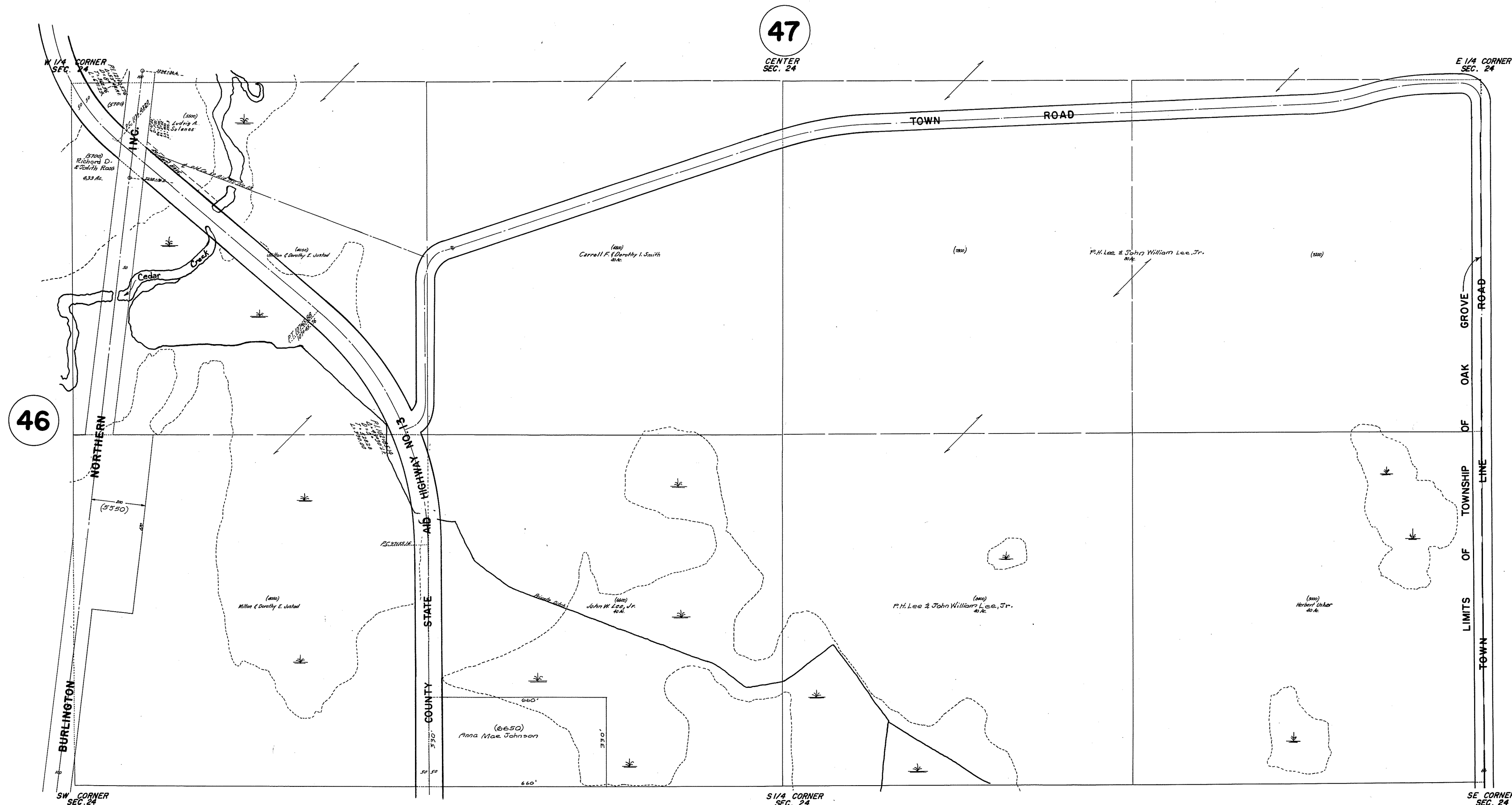


S. 1/2 SEC. 24, T. 33, R. 24

TOWNSHIP OF OAK GROVE

THIS IS A COMPILATION OF RECORDS AS THEY APPEAR IN THE ANOKA COUNTY OFFICES AFFECTING THE AREA SHOWN. THIS DRAWING IS TO BE USED ONLY FOR REFERENCE PURPOSES AND THE COUNTY IS NOT RESPONSIBLE FOR ANY INACCURACIES HEREIN CONTAINED.

86424



ROLAND W. ANDERSON
COUNTY SURVEYOR
ANOKA COUNTY, MINNESOTA

PLAT 3-20-70
PLAT 11-20-71
PLAT 2-24-72
PLAT 3-24-72
D.L.P. 11-12-53