

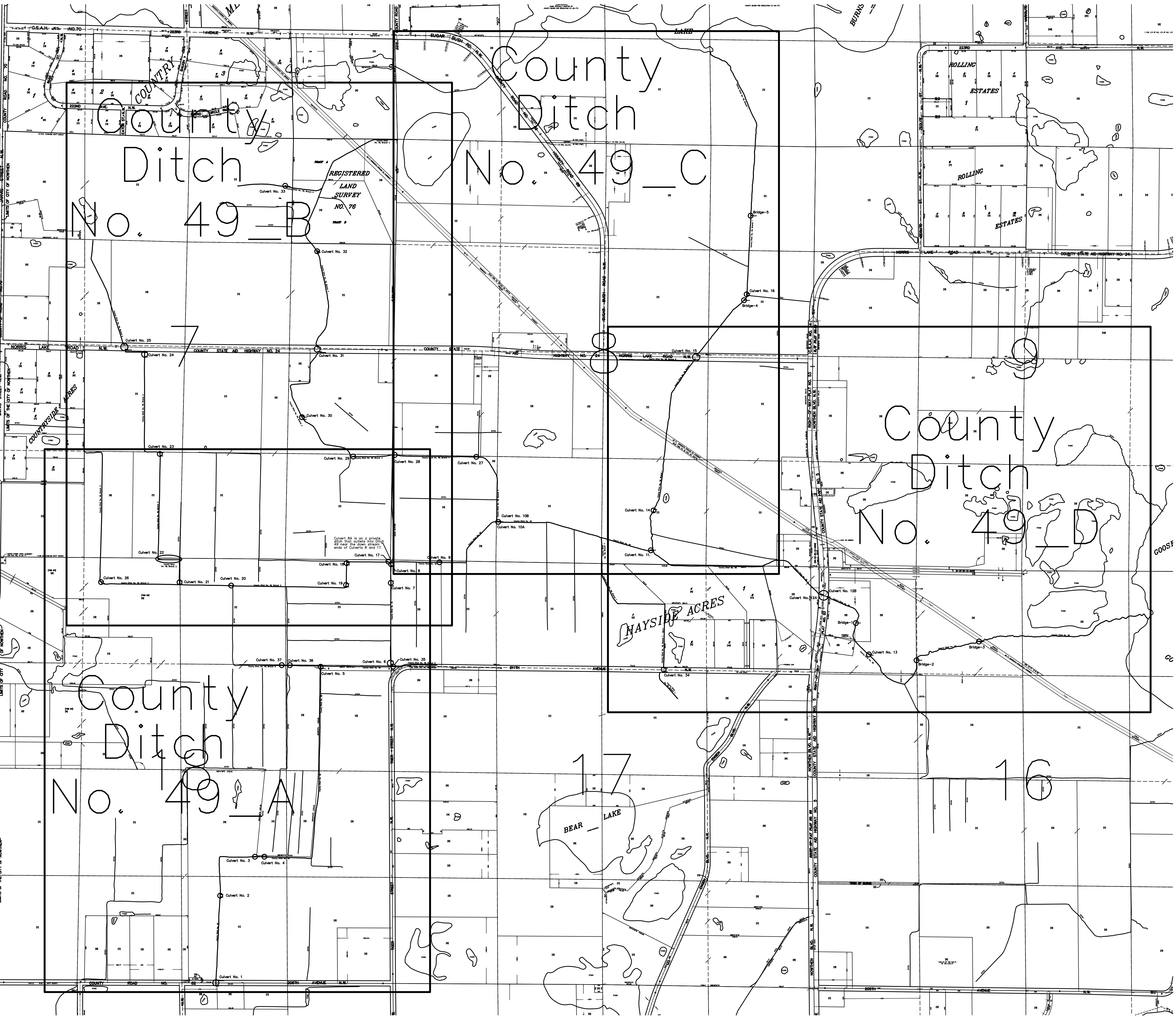
SHERBURNE CC

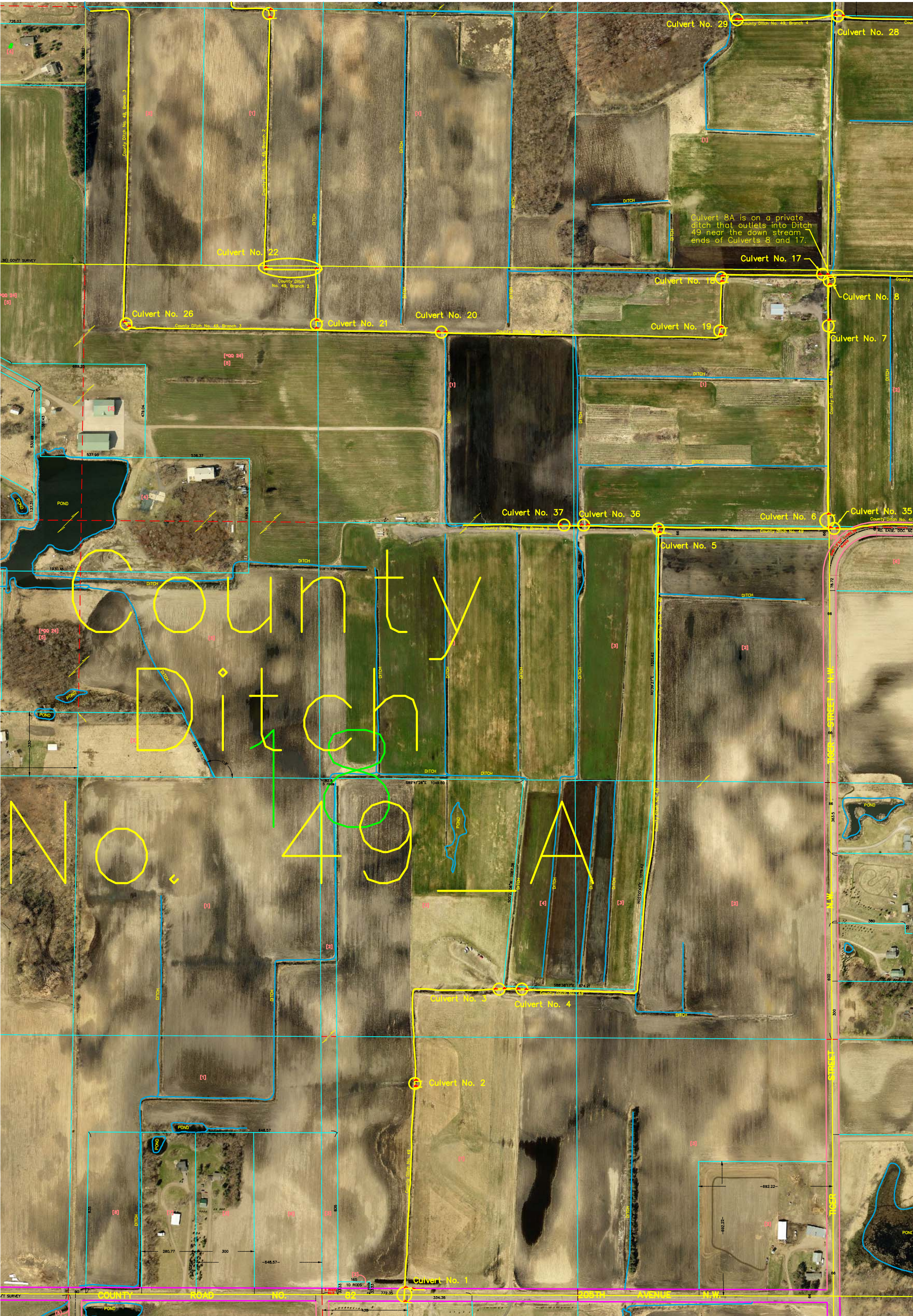
WINDHAM COUNTY

WINDHAM COUNTY

WINDHAM COUNTY

WINDHAM COUNTY





Culvert 8A is on a private ditch that outlets into Ditch 49 near the down stream ends of Culverts 8 and 17.

County Ditch No. 49

COUNTY ROAD NO. 62 205TH AVENUE N.W.

TIGER STREET N.W.

# Ditch

# No. 49B

REGISTERED  
LAND  
SURVEY  
NO. 76



Culvert 8A is on a private ditch that outlets into Ditch 49 near the down stream ends of Culverts 8 and 17.

22ND AVE. N.W.  
EATON STAINW.  
22ND CIRCLE  
COUNTY STATE AID HIGHWAY NO. 24  
COUNTY DITCH NO. 49, BRANCH 1  
COUNTY DITCH NO. 49, BRANCH 2  
COUNTY DITCH NO. 49, BRANCH 3  
COUNTY DITCH NO. 49, BRANCH 4  
TRACT A  
TRACT B  
POND  
DITCH  
Culvert No. 33  
Culvert No. 32  
Culvert No. 25  
Culvert No. 24  
Culvert No. 31  
Culvert No. 30  
Culvert No. 29  
Culvert No. 28  
Culvert No. 23  
Culvert No. 22  
Culvert No. 17  
Culvert No. 18  
Culvert No. 19  
Culvert No. 20  
Culvert No. 21  
Culvert No. 26  
Culvert No. 8  
Culvert No. 7

# County Ditch

