

ANOKA COUNTY
COUNTY DITCH INSPECTION REPORT

DITCH # 49

DATE: 7/19/94

BY: P K Ruud

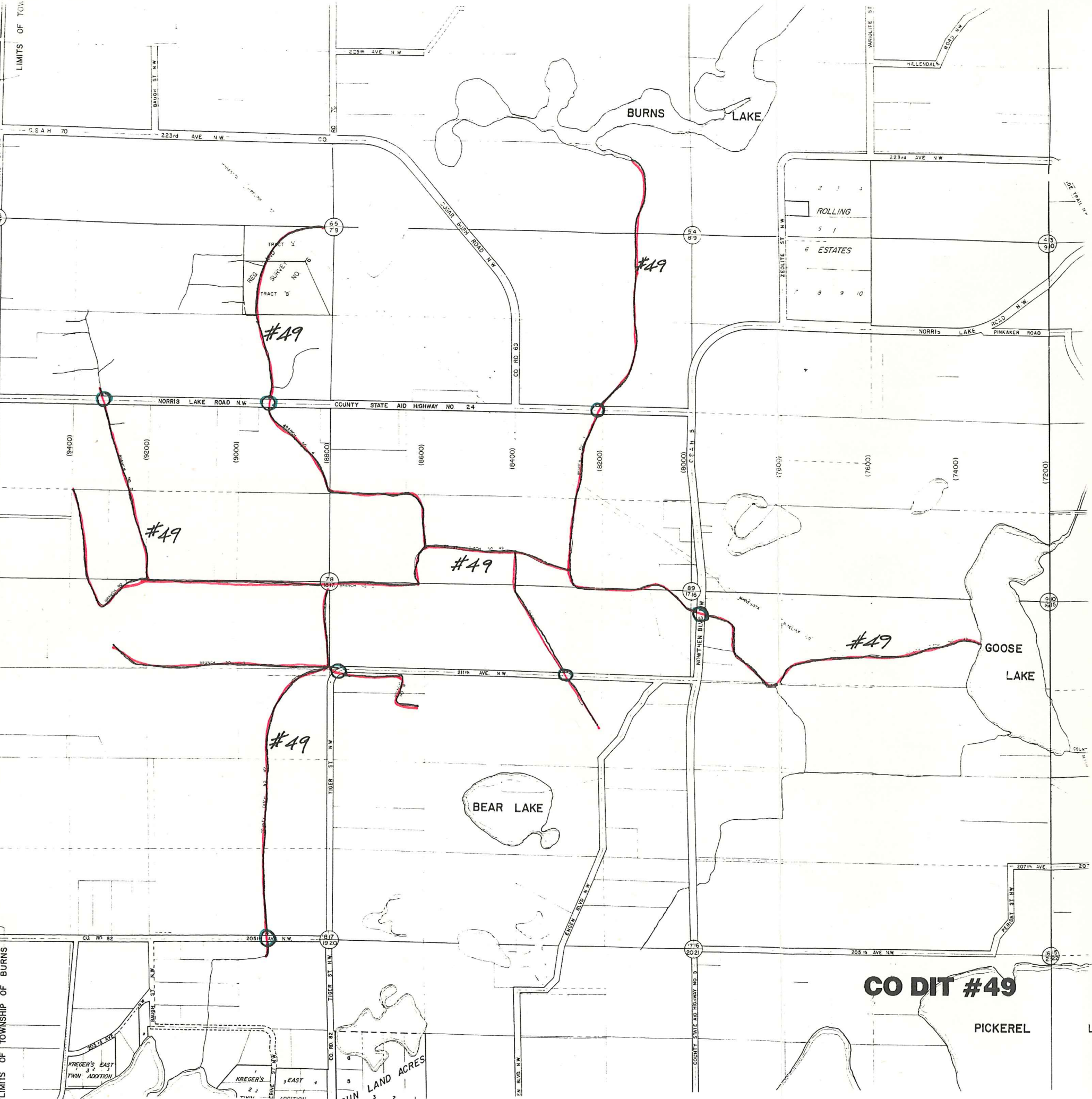
COMMUNITIES: Burns

REMARKS:

CSAH # 5	Ditch well maintained and flowing freely. Extensive peatland farming in area west of CSAH # 5.
CSAH # 24	(Br # 1) Ditch well defined and flowing freely.
CSAH # 24	(Br # 4) Ditch well defined but overgrown with canary grass. No apparent flow from the north.
CSAH # 24	(Br # 2) Ditch well defined but overgrown with canary grass, but flowing. Peatland farming to the south and haying on meadow to the north.
211th Ave N W	(Br . in the W 1/2 NE 1/4, Sec 17) Ditch noticeable on north side of the road. Better defined ditch to the north along the E line of the above noted W 1/2 NE /14/Sec 17. No apparent flow. Agricultural use of the meadows on both sides of the road.
211th @ Tiger St	Ditches from the west and to the north are well maintained. No apparent flow. Ditch from the east along the south side of 211 is defined but overgrown with canary grass. No apparent flow.
CR # 82	Ditch defined. Pond excavated on the south side of the road. No apparent flow.

ACTIVITIES:

CITY OF ELK RIVER, SHERBURNE COUNTY
LIMITS OF TOWNSHIP OF BURNS



CO DIT #49

PICKEREL

KREGER'S EAST TWIN ADDITION
KREGER'S EAST TWIN
LAND ACRES