

# ANOKA COUNTY

## COUNTY DITCH INSPECTION REPORT

DITCH # 51

DATE: 7/19/94

BY: P K Ruud

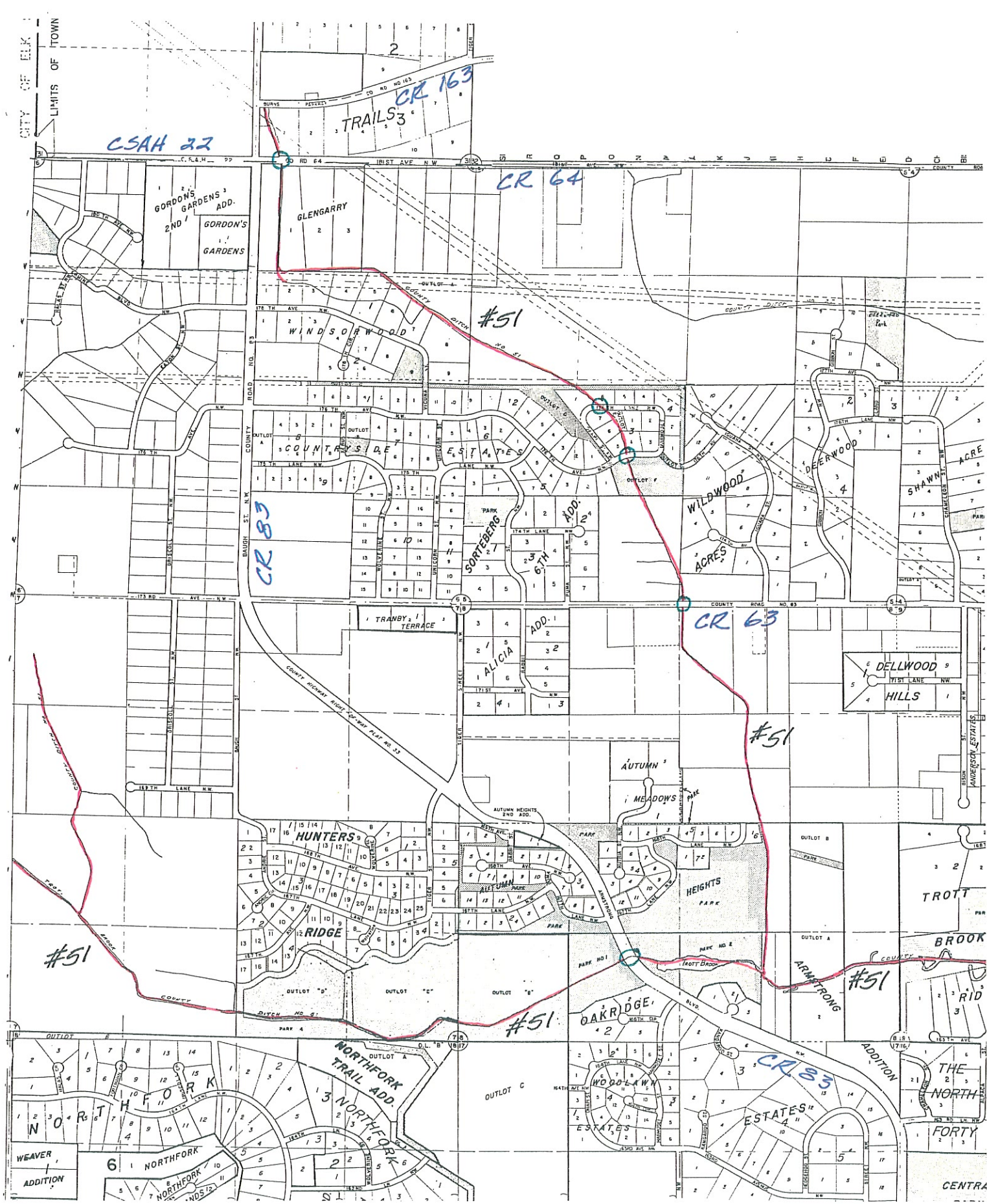
COMMUNITIES: Burns, Ramsey

### REMARKS:

CSAH # 5	Designated county ditch actually starts on the 1/16th line , 1/4 mile west of CSAH # 5. Ditch at CSAH # 5 is defined and flowing.
Variolite Street	Ditch wide and clear and flowing. Wide marshy area on both sides of the road.
C R # 83	Ditch defined and flowing. Inlet (west) end of culvert repaired June/July, 1994.
C R # 63	Ditch defined but overgrown. Ditch flowing to the south.
176th Avenue	Ditch defined and flowing, but overgrown.
176th Lane	Ditch defined and flowing, but overgrown.
C R # 64	Ditch defined. No apparent flow. Deadfalls in the ditch to the south of C R # 64.

### ACTIVITIES:

In the segment from 176th Lane to C R # 64, we have had beaver problems. Have had beaver trapped and dams removed.



CITY OF ELK  
LIMITS OF TOWN

CSAH 22

TRAILS 3  
CR 163

CR 64

GORDON'S GARDENS 2ND  
GORDON'S GARDENS

GLENGARRY

#51

CR 83

COUNTRY SIDE

ESTATES

CR 63

#51

#51

HUNTERS RIDGE

#51

OAKRIDGE

#51

WEAVER ADDITION

NORTH FORK

NORTH FORK TRAIL ADD.

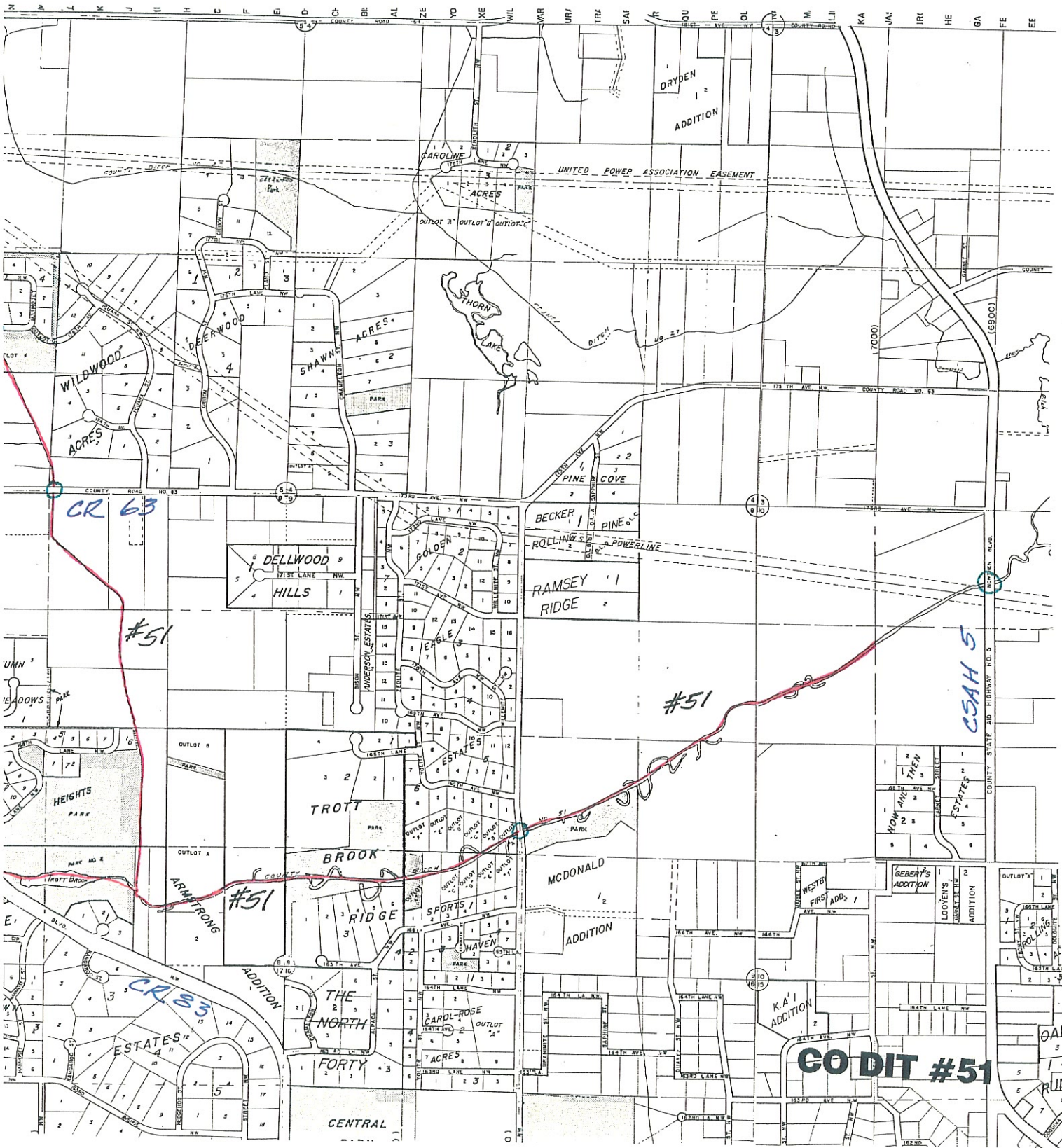
OUTLOT C

WOODLAW

CR 83

ESTATES

CENTRA



CR 63

#51

#51

CSAH 5

DELLWOOD HILLS

RAMSEY RIDGE

TROTTS BROOK RIDGE

MCDONALD ADDITION

CR 83

GO DIT #51

CENTRAL

K.A.'S ADDITION

GEBERT'S ADDITION

LOOVEN'S ADDITION

UNITED POWER ASSOCIATION EASEMENT

DREYDEN ADDITION

CAROLINE ACRES

STHORN LAKE

SHAWN ACRES

WILDWOOD ACRES

DEERWOOD

GOLDEN

BECKER PINE COVE

UMN

HEIGHTS PARK

SPORTS RIDGE

HAVEN

ESTATES

THE NORTH FORTY

CARD-ROSE ACRES

WESTER FIRST ADDITION

GEORGE'S ADDITION

LOOVEN'S ADDITION

OUTLOT A

OUTLOT B

OUTLOT C

OUTLOT D

OUTLOT E

OUTLOT F

OUTLOT G

OUTLOT H

OUTLOT I

#51 (Trott Brook)

7/19/94

PKR

#5

Designated county ditch actually starts on 16<sup>th</sup> line, 1/4 mi. west of #5.

Ditch @ #5 is defined & flowing

Variolite St.

Ditch wide & clear. Flowing. Wide marshy area on both sides of the road.

#83

Ditch defined & flowing. Inlet end of culvert repaired June/July, 1994.

#63

Ditch defined but grown over. Flowing to south.

176<sup>th</sup> Ave

Defined, but overgrown  
Flowing

176<sup>th</sup> Lane

Defined, but overgrown  
Flowing

In segment from 176<sup>th</sup> to CR #64, we have beaver problems. Had beaver traps and dams removed.

#64

Ditch defined, dead falls in ditch to south. No apparent flow.

PUBLIC DRAINAGE DITCH INVENTORY FORM  
(Laws of 1990, Chapter 601, Section 27)

1. Drainage authority name: Anoka County (Burns/Ramsey)
2. Drainage ditch name and number: #51 (Trott Brook)
3. Ditch location and drainage area boundary: (shown on attached quadrangle map)
4. Drainage area in acres: 1874.67 ; Benefitted area in acres: 735
5. Approximate length in miles: Open Ditch 7.56 Buried Tile 0
6. Year constructed: 1910 ; Original cost: \$ 3727.39
7. Are original plans on file? Yes  No  ; Location: Anoka County Courthouse
8. Date of original plans: 1909
9. Are "as built" plans on file? Yes  No  ; Location: \_\_\_\_\_
10. Year(s) improved: None
11. Are improvement plans on file? Yes  No N/A ; Location: \_\_\_\_\_
12. Year(s) repaired: None
13. Are repair plans on file? Yes  No N/A ; Location: \_\_\_\_\_
14. If the ditch was transferred from a county or joint county ditch authority to a watershed district or WMO, is the transfer order on file? Yes  No  NA
15. Is the list of lands benefitted and damaged on file? Yes  No
16. Have the benefits and damages been redetermined? Yes  No  ; If yes, year(s) of redetermination: \_\_\_\_\_
17. Has right-of-way been acquired for a 1-rod permanent grassed strip? Yes  No  ; If yes, has it been maintained? Yes  No
18. Is there a maintenance fund for the ditch? Yes  No  ; If yes, current balance in maintenance fund: \$ \_\_\_\_\_
19. What was the last year maintenance work was performed by drainage authority:  
1977-78  $\frac{1}{2}$  mile from 63 south.

20. Have other local units or private parties performed maintenance work on the ditch?  
Yes \_\_\_\_\_ No x ; List parties: \_\_\_\_\_

21. Have the alignment, grade, bottom width, or bridge or culvert crossings been materially changed from the original or improved construction, without going through formal ditch proceedings? Yes \_\_\_\_\_ No x

22. Is the ditch inspected annually \_\_\_\_\_; every 2-5 years \_\_\_\_\_; every 5-10 years; only when a problem arises x; or never \_\_\_\_\_? Year of last inspection: \_\_\_\_\_

23. Approximate percentage of the ditch's contributing drainage area that is currently urbanized: 21 %; rural: 79 %

24. Have any substantial areas of wetlands originally totally drained by the ditch reestablished themselves due to lack of ditch maintenance? Yes \_\_\_\_\_ No x

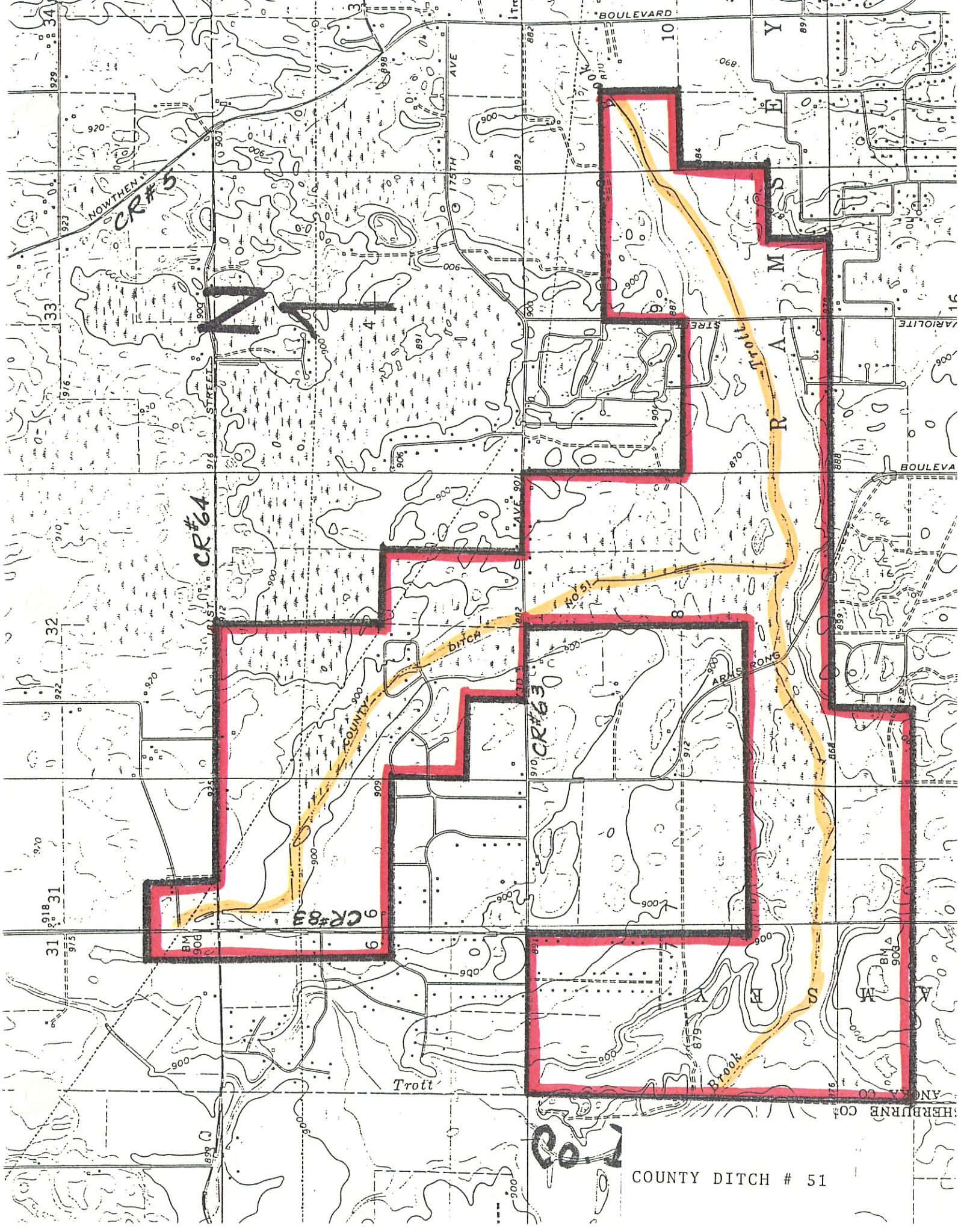
25. What is the general condition of the ditch?
- a. well-maintained \_\_\_\_\_
  - b. fairly well-maintained x
  - c. poorly maintained \_\_\_\_\_
  - d. very poorly maintained \_\_\_\_\_
  - e. functionally abandoned \_\_\_\_\_

26. Describe the existing condition of the ditch, including erosion/sedimentation problems:  
Main ditch appears to flow very well.  
\_\_\_\_\_  
\_\_\_\_\_  
\_\_\_\_\_  
\_\_\_\_\_

27. Does the ditch continue to serve a useful purpose to one or more properties? Yes x  
No \_\_\_\_\_; Estimated acres of agricultural land currently benefitting: 588

28. What plans are there for future management of the ditch? A. Monitor the ditch for problems that occur, such as deadfalls, unapproved culverts/crossings, or filling, that block or impede the normal flow. B. Review, with municipalities & the WMO's, the impact of new development on the drainage system. C. Monitor & repair/replace drainage structures at county highway crossed by the ditch.

29. Additional comments or recommendations for statutory changes: \_\_\_\_\_  
A. Need legislation that allows for maintenance of the county ditch system  
B. Need changes in county ditch legislation that provides for a method (s)  
of assessing property within a drainage area to pay for approved  
repairs or improvements.  
\_\_\_\_\_  
\_\_\_\_\_



COUNTY DITCH # 51

HERBURN CO.  
AND CO.