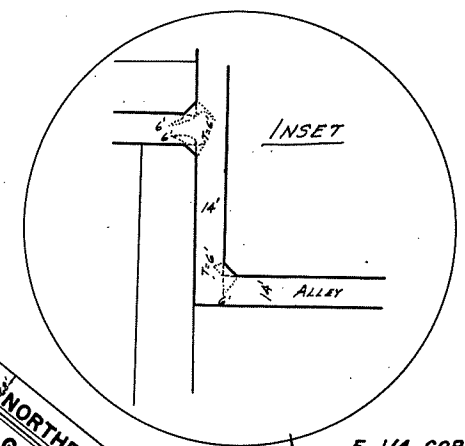


# S 1/2 SEC. 22, T. 31, R. 24

CITY OF COON RAPIDS

THIS IS A COMPILATION OF RECORDS AS THEY APPEAR IN THE ANOKA COUNTY OFFICES AFFECTING THE AREA SHOWN. THIS DRAWING IS TO BE USED ONLY FOR REFERENCE PURPOSES AND THE COUNTY IS NOT RESPONSIBLE FOR ANY INACCURACIES HEREIN CONTAINED.



40922

38

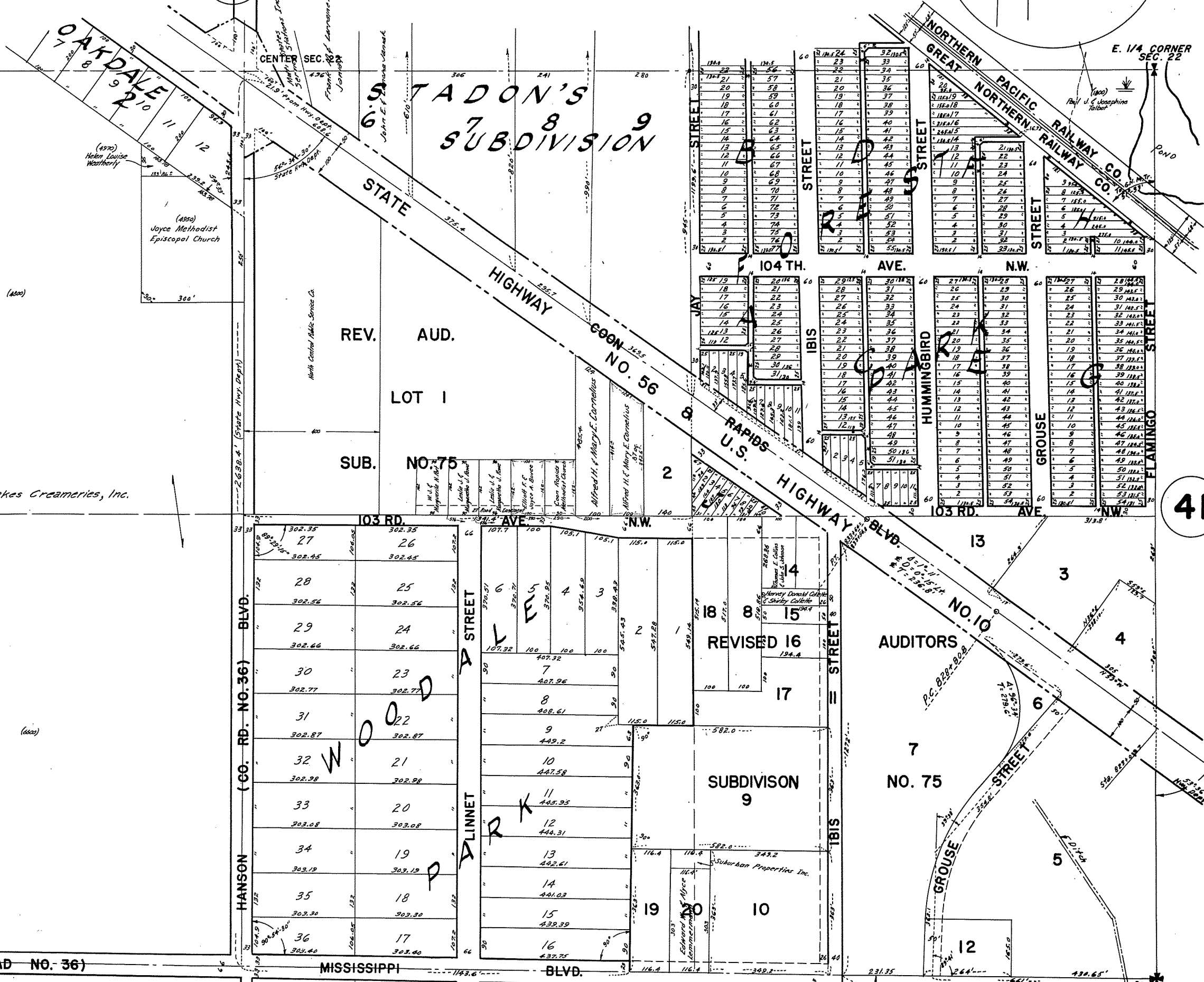
W. 1/4 CORNER SEC. 22

E. 1/4 CORNER SEC. 22

37

41

48



(600) Consolidated Breeders Co-operative 40 Acres

(600) Consolidated Breeders Co-operative 37 Acres

Land O'Lakes Creameries, Inc.

(1880) Joyce Methodist Episcopal Church