

CONVENTIONAL SIGNS

STATE LINE	TIMBER	
COUNTY LINE	BRUSH	
TOWNSHIP OR RANGE LINE	ORCHARD	
SECTION LINE	ROCK LEDGE	
QUARTER LINE	SAND	
SIXTEENTH LINE	EDGE OF CUT	
RIGHT-OF-WAY LINE	TOE OF EMBANKMENT	
PROPERTY LINE (Except Land Lines)	CATCH BASIN	
VACATED PLATED PROPERTY	MARSH	
CORPORATE OR CITY LIMITS	FIRE HYDRANT	
TRUNK HIGHWAY CENTER LINE	ARC LAMP	
RETAINING WALL	OTHER LAMPS (State Kind)	
STEAM RAILROAD	RAILROAD CROSSING SIGN	
ELECTRIC RAILROAD	RAILROAD CROSSING BELL	
RAILROAD RIGHT-OF-WAY LINE	ELECTRIC WARNING SIGN	
CREEK	CROSSING GATE	
RAPIDS OR WATERFALL	CATTLE GUARD	
DRY RUN	OVERHEAD (Highway Over)	
DRAINAGE DITCH	UNDERPASS (Highway Under)	
HIGH TENSION LINE	ABUTMENT, WALL & PIER	
POWER POLE LINE	BRIDGE	
TELEPHONE OR TELEGRAPH LINE	BUILDING (One Story Frame)	
CULVERT	F-FRAME C-CONCRETE	
DROP INLET	S-STONE T-TILE	
GUARD RAIL	B-BRICK ST-STUCCO	
WIRE FENCE	IRON PIPE	
RAILROAD SNOW FENCE	STONE MONUMENT	
BOARD OR HIGHWAY SNOW FENCE	WOOD STAKE OR HUB	
STONE WALL OR FENCE	MEANDER CORNER	
HEDGE		
WATER PIPE		
SEWER PIPE		
DRAIN TILE		
GRAVEL PIT		
SAND PIT		
CLAY PIT		
ROCK QUARRY		
SPRINGS		
MARSH		
TRUNK HIGHWAY R/W		
RAILROAD R/W		
PRESENT ROAD R/W		
LIMITED ACCESS		

STATE OF MINNESOTA
DEPARTMENT OF HIGHWAYS
CONSTRUCTION PLAN FOR GRADING

TRUNK HIGHWAY NO. 35W=394

BETWEEN 0.51 MILES N. OF CO. ROAD AND 0.04 MILES N.E. OF T.H. 8
A PT. 23.98' NORTH AND 083.32' WEST OF EAST 1/4 COR. OF SEC. 34 T.31N. R.23W. AND A PT. 696.18' SOUTH AND 19.15' EAST OF NORTH 1/4 COR. OF SEC. 17, T.31 N. R.22 W.

MINNESOTA PROJECT 135W-3()12

STATE PROJECT NO. 0280-03

GROSS LENGTH	28,056.02 FEET	5.314 MILES
BRIDGES-LENGTH	0.00 FEET	0.00 MILES
EXCEPTIONS-LENGTH	0.00 FEET	0.00 MILES
NET LENGTH	28,056.02 FEET	5.314 MILES

GROSS LENGTH	28,056.02 FEET	5.314 MILES
BRIDGES-LENGTH	0.00 FEET	0.00 MILES
EXCEPTIONS-LENGTH	0.00 FEET	0.00 MILES
NET LENGTH	28,056.02 FEET	5.314 MILES

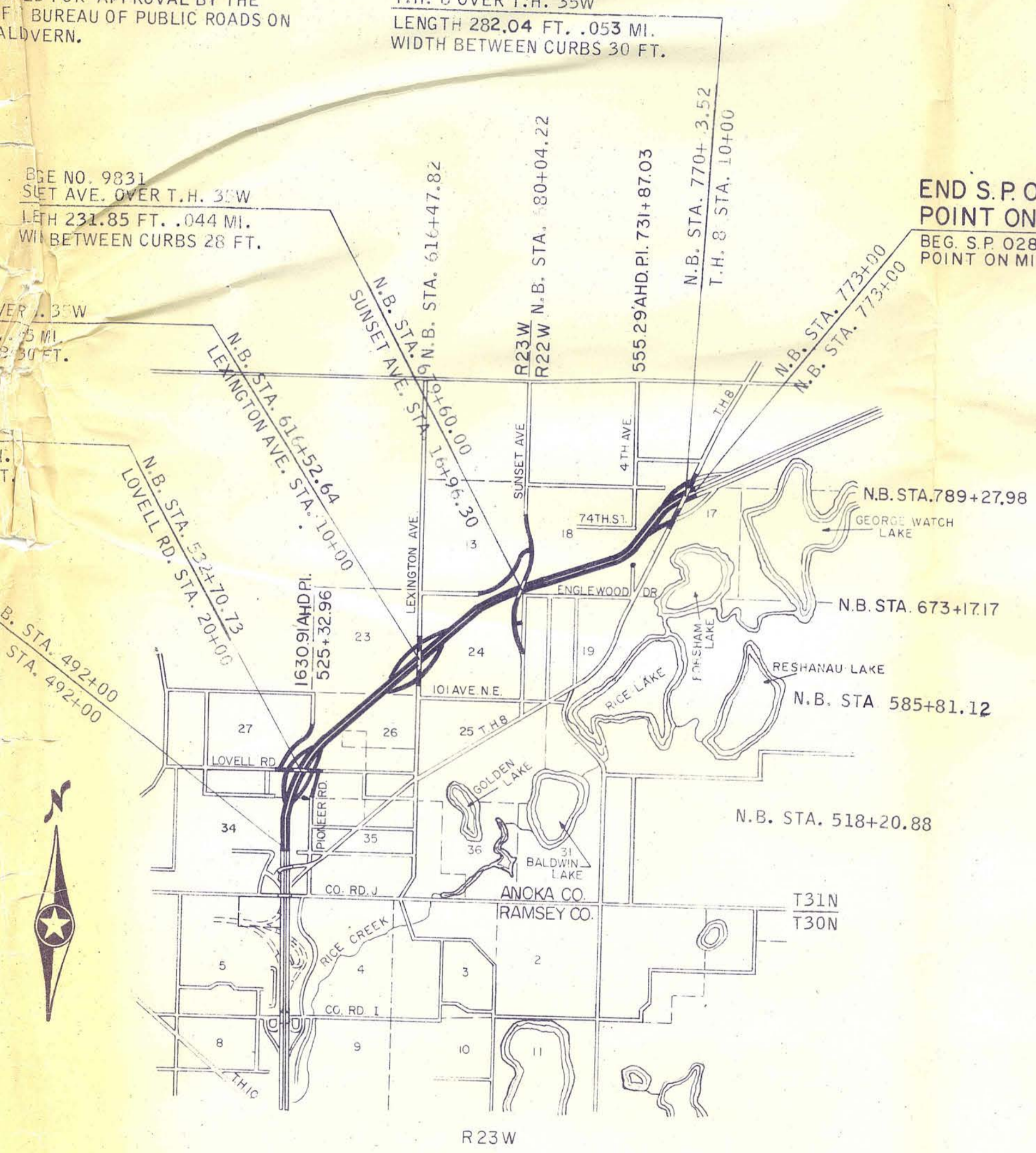
PLAN: 100'
PROFILE: Horiz. 10 FT. Vert. 10 FT.
Scale: 1" = 40 FT.

LENGTHS AND DESCRIPTIONS SHOWN ARE BASED ON THE NORTHBOUND ROADWAY CONSTRUCTION CENTERLINE.

EQUATIONS
STA. 546+43.68 = STA. 546+37.66
STA. 620+87.57 = STA. 621+37.51

THE "SPECIFICATIONS FOR HIGHWAY CONSTRUCTION" DATED MAY 1, 1959 AND SUBMITTED FOR APPROVAL BY THE DIVISION ENGINEER OF BUREAU OF PUBLIC ROADS ON MARCH 26, 1959 SHALL GOVERN.

BRIDGE NO. 9820
T.H. 8 OVER T.H. 35W
LENGTH 282.04 FT. .053 MI.
WIDTH BETWEEN CURBS 30 FT.

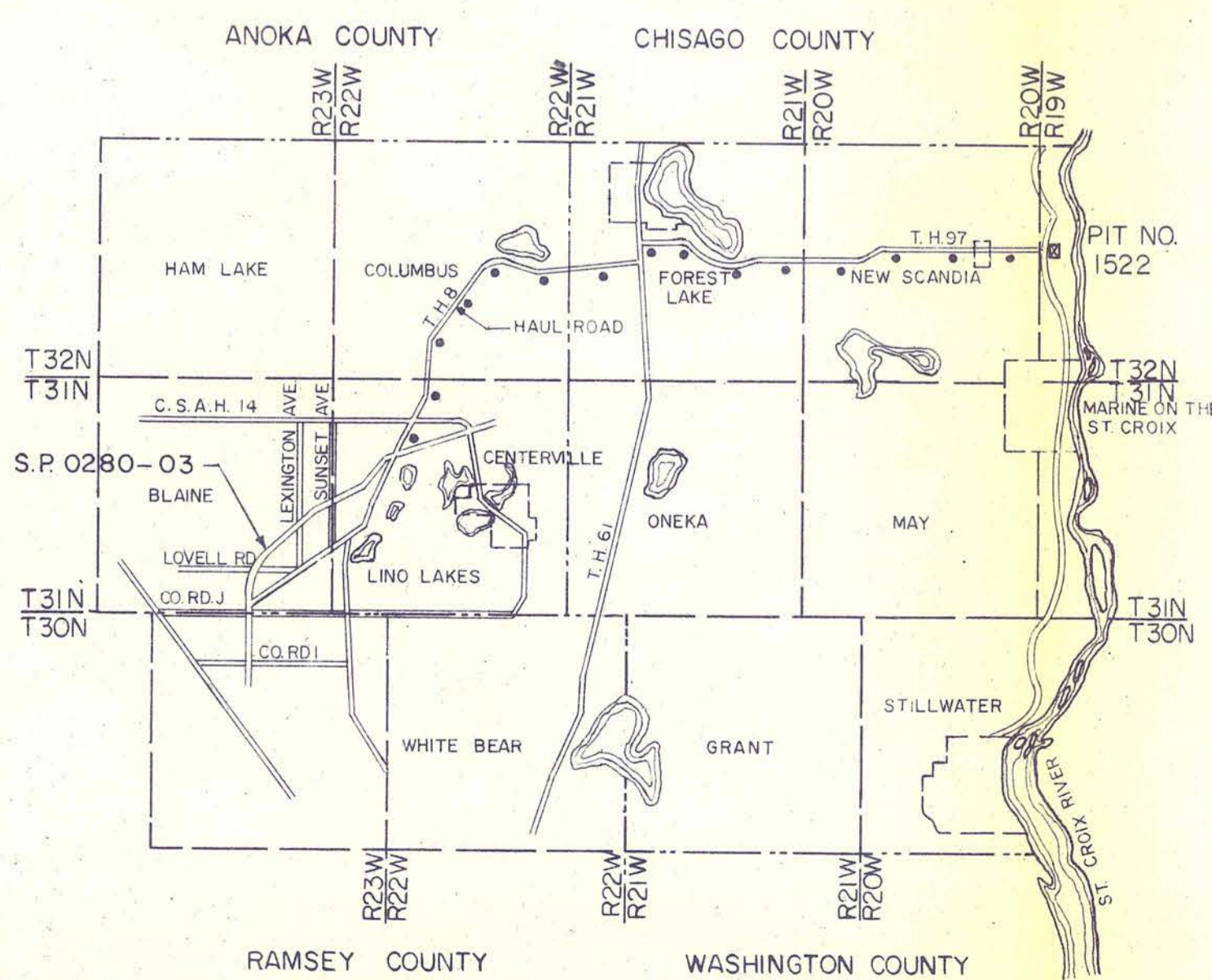


END S.P. 0280-03 (T.H. 35W=394)
POINT ON MINN. PROJ. 135W-3()122
BEG. S.P. 0280-07 (T.H. 35W=394)
POINT ON MINN. PROJ. 135W-3()122

PIT DATA

PIT NO. 1522	Located in S. E. 1/4 OF SEC. 18, T32N, R19W
PIT NO.	Located in Dead Haul
PIT NO.	Located in Dead Haul
PIT NO.	Located in Dead Haul

PIT NO. 1522 IS PROVIDED AS A POSSIBLE SOURCE FOR CLASS 5 GRAVEL BASE AND BITUMINOUS AGGREGATES.



Right of Way Approval	ENGINEER OF LANDS AND RIGHT OF WAY	19
Planned By	ENGINEER OF PLANS	19
Recommended for Approval	ASSISTANT PLANS, SURVEYS & DESIGN ENGINEER	19
Recommended for Approval	DISTRICT ENGINEER	19
Recommended for Approval	PLANS, SURVEYS & DESIGN ENGINEER	19
Approved	DEPUTY CHIEF ENGINEER	19

MINNESOTA ENGINEERING CO., INC.
8001 BLOOMINGTON FREEWAY
MINNEAPOLIS 20, MINNESOTA
I HEREBY CERTIFY THAT THIS PLAN WAS PREPARED BY ME OR UNDER MY DIRECT SUPERVISION AND THAT I AM A DULY REGISTERED PROFESSIONAL ENGINEER UNDER THE LAWS OF THE STATE OF MINNESOTA.
Russell R. Rengseth
DATE 4/5/63 REG. NO. 6171

DEPARTMENT OF COMMERCE
BUREAU OF PUBLIC ROADS
APPROVED: _____
DIVISION ENGINEER DATE _____
DESIGN SQUAD _____

PROJECT DESIGN SPEED 70 M.P.H.
BASED ON STOPPING SIGHT DISTANCE
HEIGHT OF EYE - 3.75 FT. HEIGHT OBJECT - 0.50 FT.